

## SHORT ANSWER QUESTIONS AND ANSWERS

1. Small intestine in herbivores is longer than in carnivores. Support your answer if you agree

A. Yes, carnivorous animals cannot digest cellulose hence they have a shorter small intestine. In herbivores digestion of cellulose takes a longer time hence herbivores need an longer small intestine to allow complete digestion of cellulose.

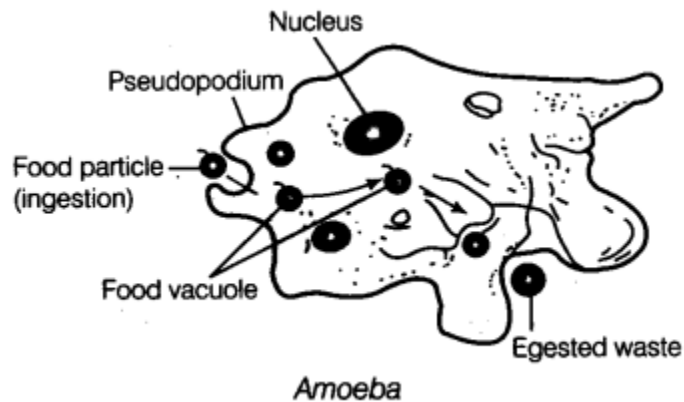
2. Name the three digestive glands in our body.

A. The three digestive glands are liver, pancreas and salivary glands.

3. Food moves in the opposite direction while vomiting. How?

The intense pressure formed in the stomach when the food is not accepted by the stomach. The content in the stomach is then pushed back. This returned content is expelled out from the mouth in the form of vomiting.

4. Sketch the diagram of amoeba and label the parts



5. Explain nutrition in star fish?

A. Starfish feeds on animals covered by hard shells of calcium carbonate. After opening the shell, the starfish pops out its stomach through its mouth to eat the soft animal inside the shell. The stomach then goes back into the body and the food is slowly digested.