

SNS COLLEGE OF PHARMACY AND HEALTH SCIENCES



Affiliated To The Tamil Nadu Dr. MGR Medical University, Chennai
Approved by Pharmacy Council of India, New Delhi.
Coimbatore -641035

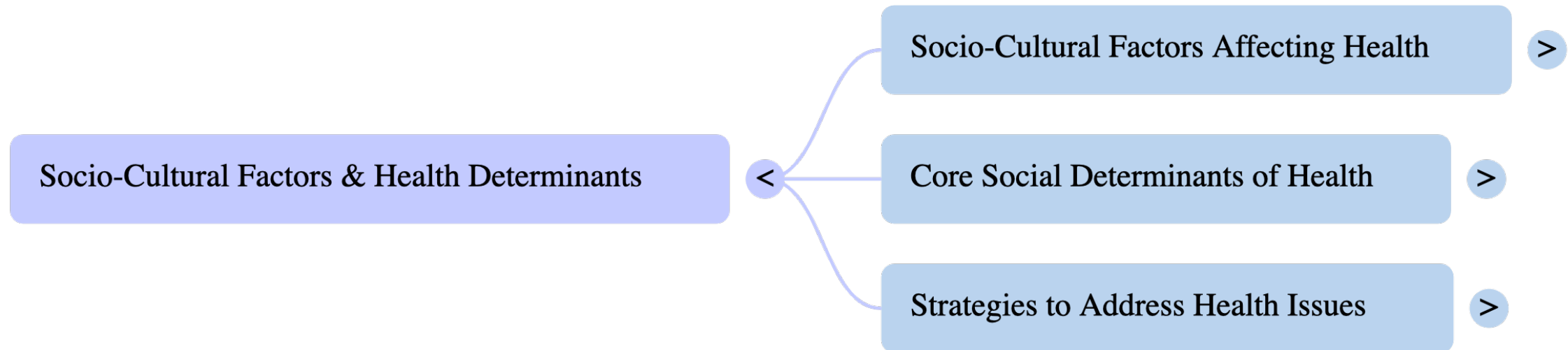
COURSE NAME : SOCIAL AND PREVENTIVE PHARMACY (BP 802 T)

B.PHARM. VIII SEM / IV YEAR

UNIT 1: TOPIC 3 : SOCIOLOGY AND HEALTH

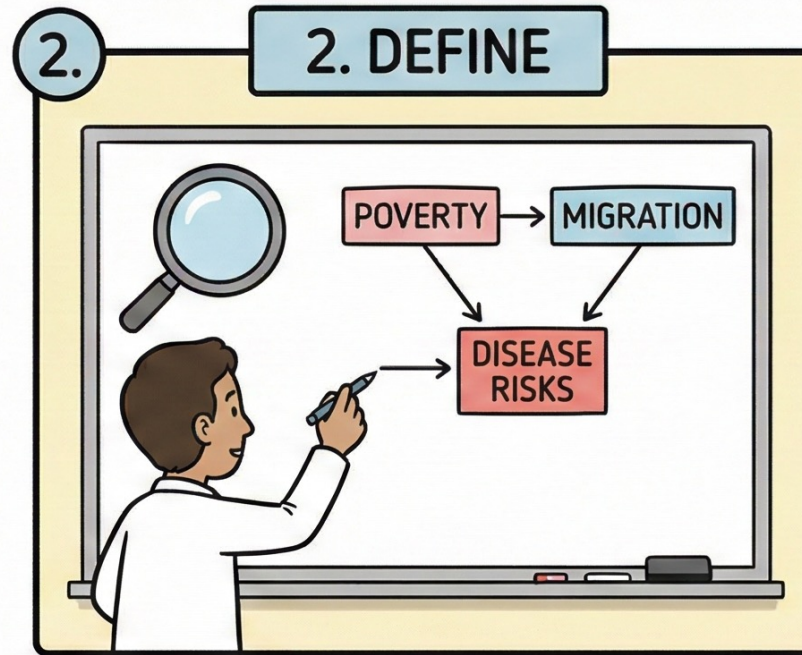
SOCIO-CULTURAL DETERMINANTS OF HEALTH: POVERTY, MIGRATION, AND DISEASE

SOCIO-CULTURAL DETERMINANTS OF HEALTH



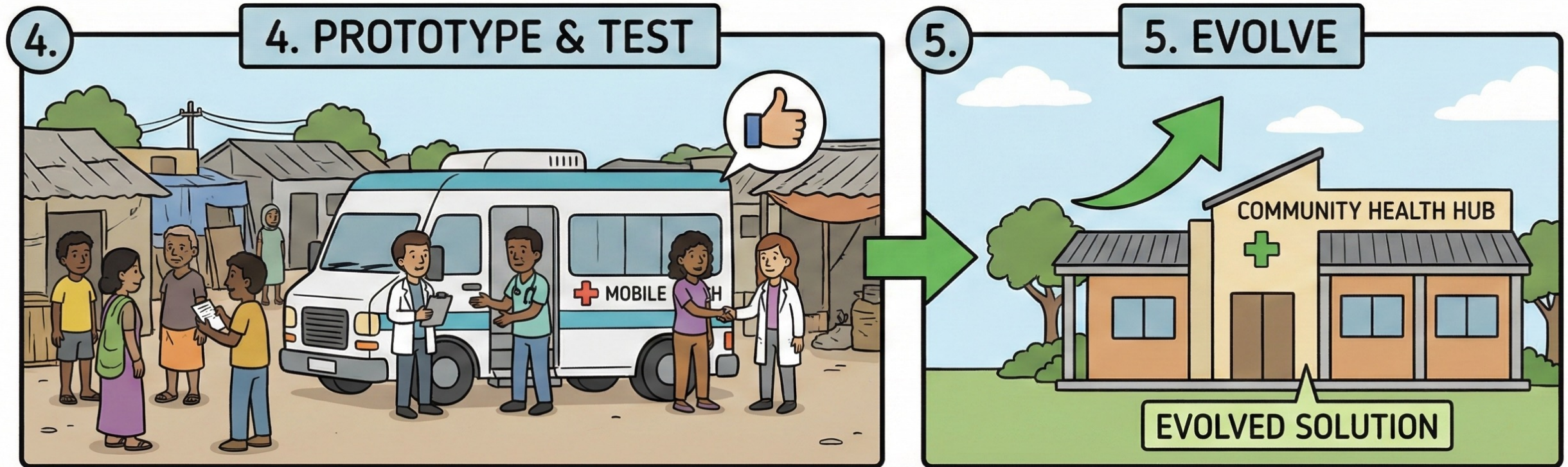
DESIGN THINKING

SOCIO-CULTURAL DETERMINANTS OF HEALTH:



DESIGN THINKING

SOCIO-CULTURAL DETERMINANTS OF HEALTH:



SOCIO-CULTURAL FACTORS INFLUENCING HEALTH



Identify Social and Cultural Determinants



Influence on Disease Patterns



Impact on Lifestyle and Behaviors



Affect Access to Healthcare



Shape Nutritional Practices

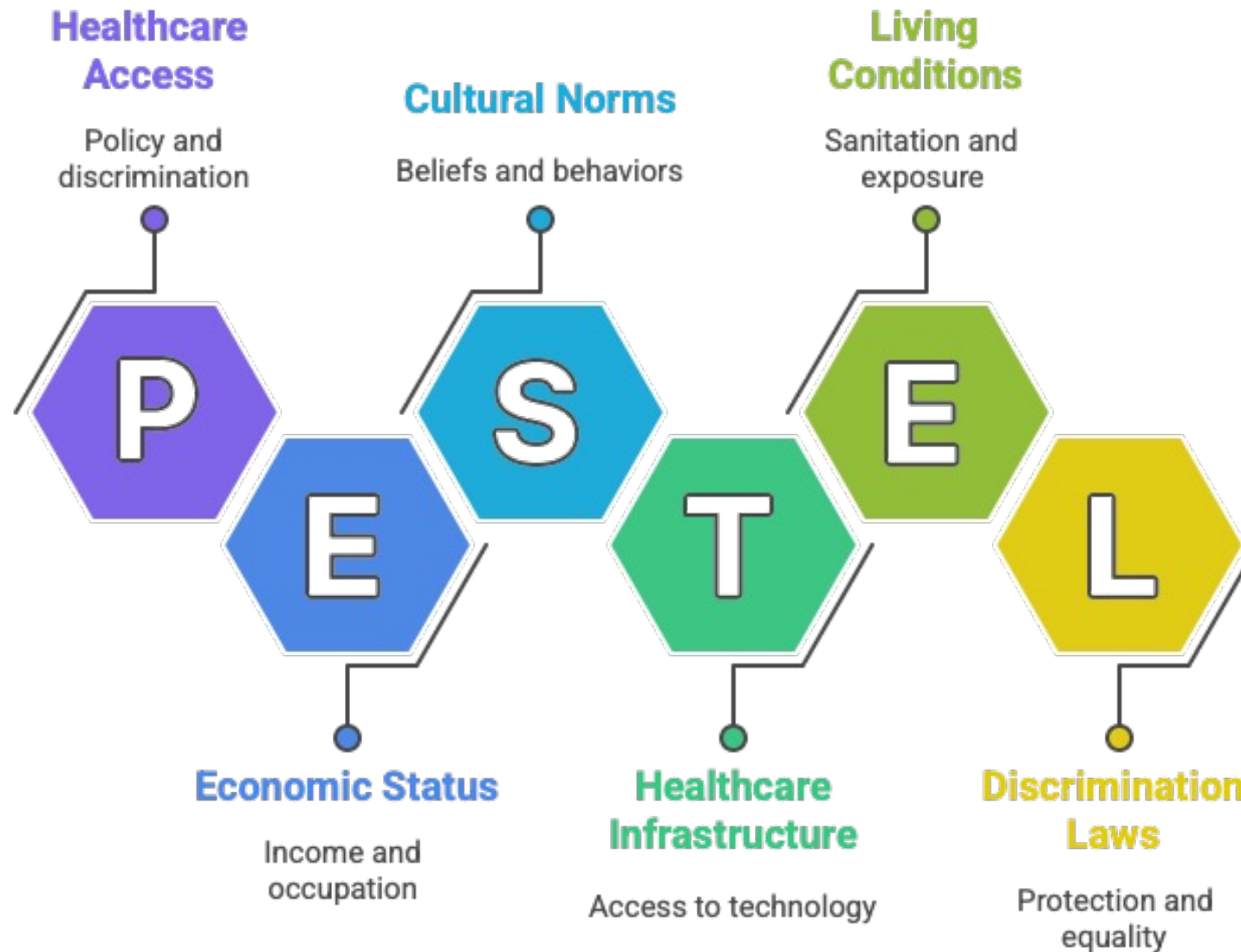


Influence Health-Seeking Behavior

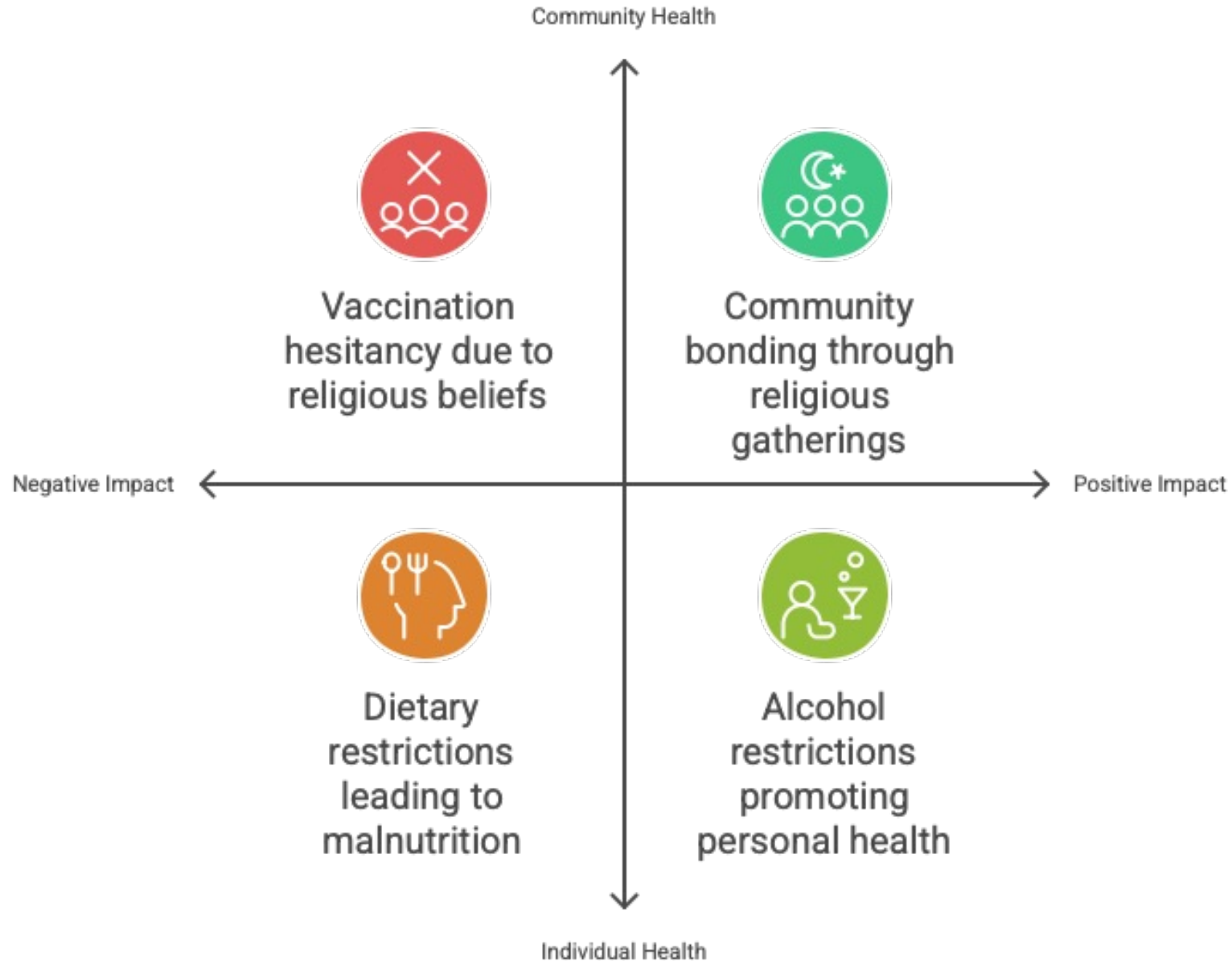


Affect Perception of Illness

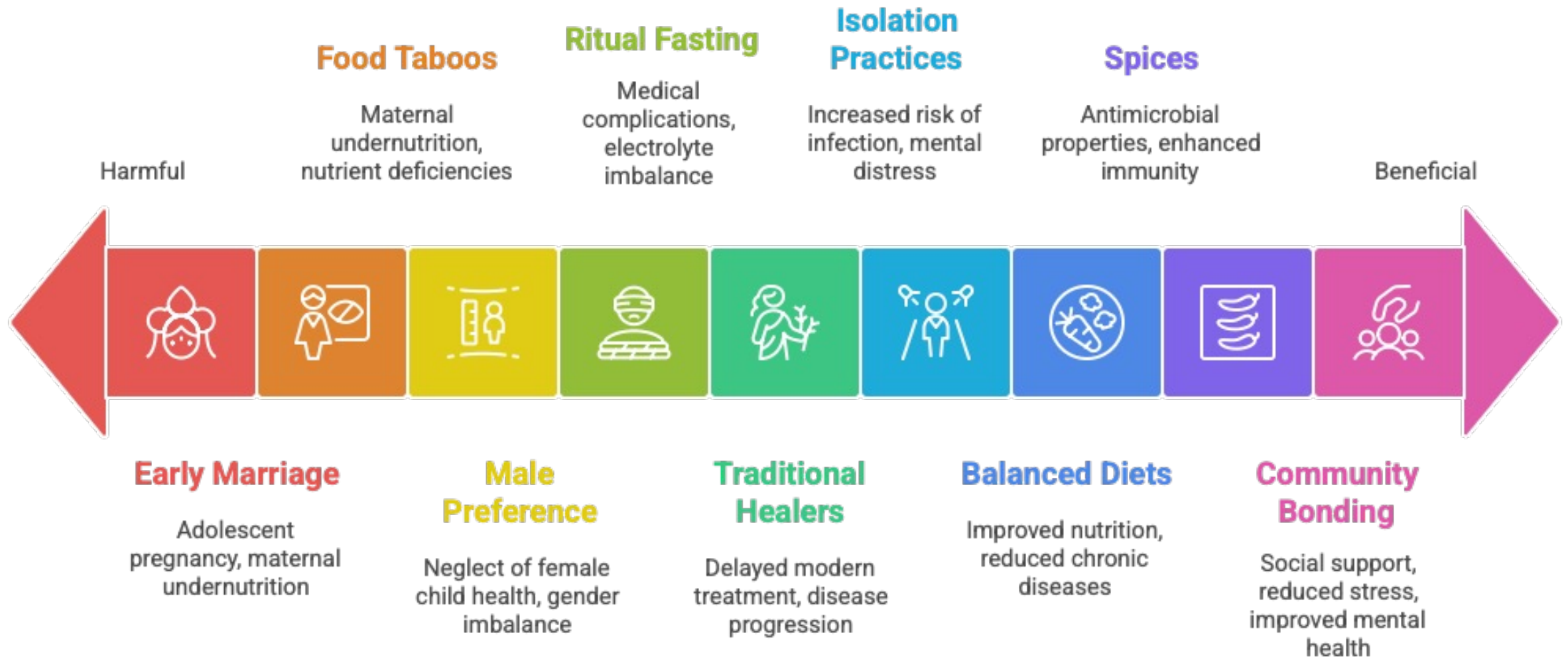
SOCIO-CULTURAL FACTORS AFFECTING HEALTH



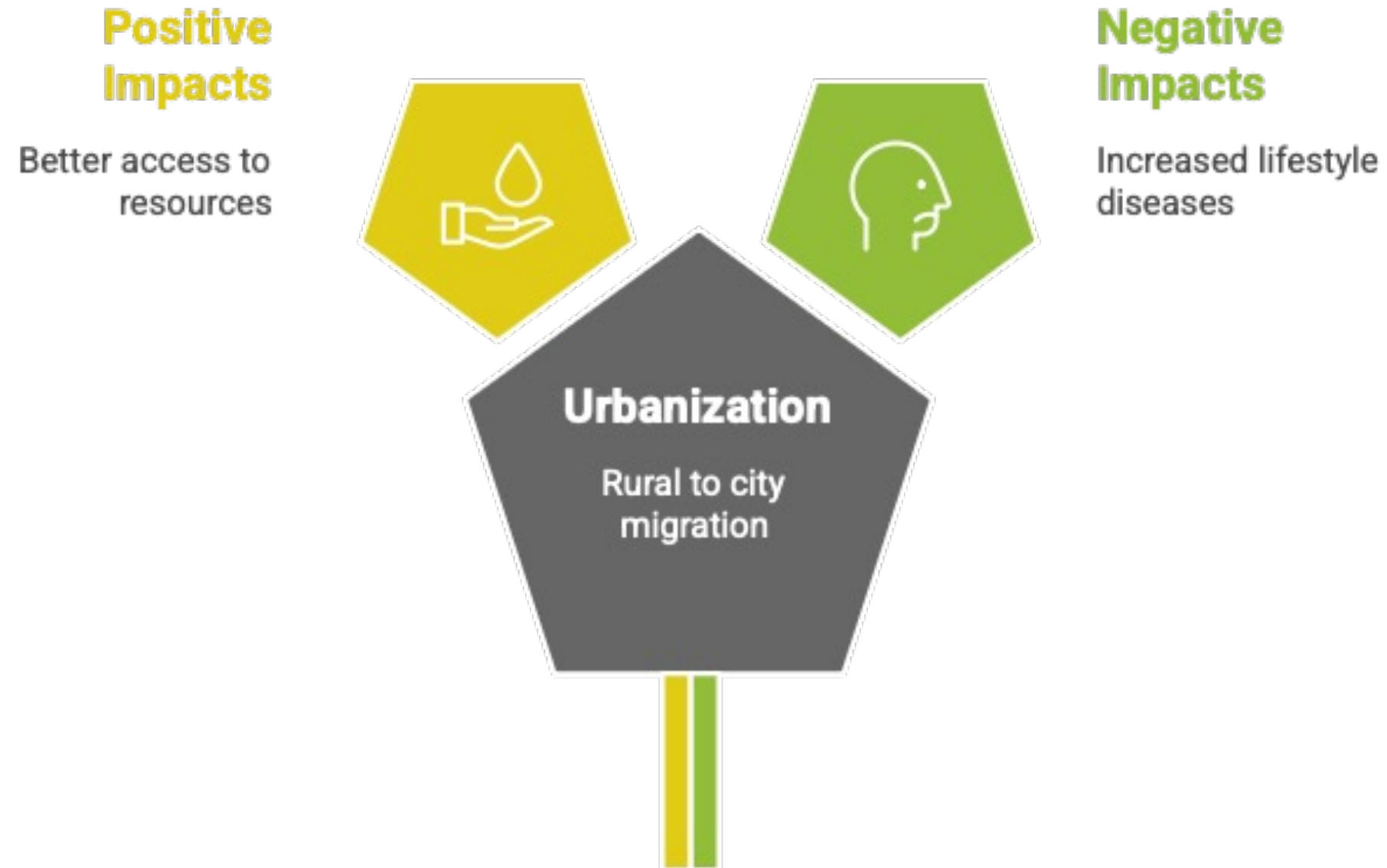
IMPACT OF RELIGIOUS FACTORS ON HEALTH



CUSTOMS AND TRADITIONS IMPACT ON HEALTH



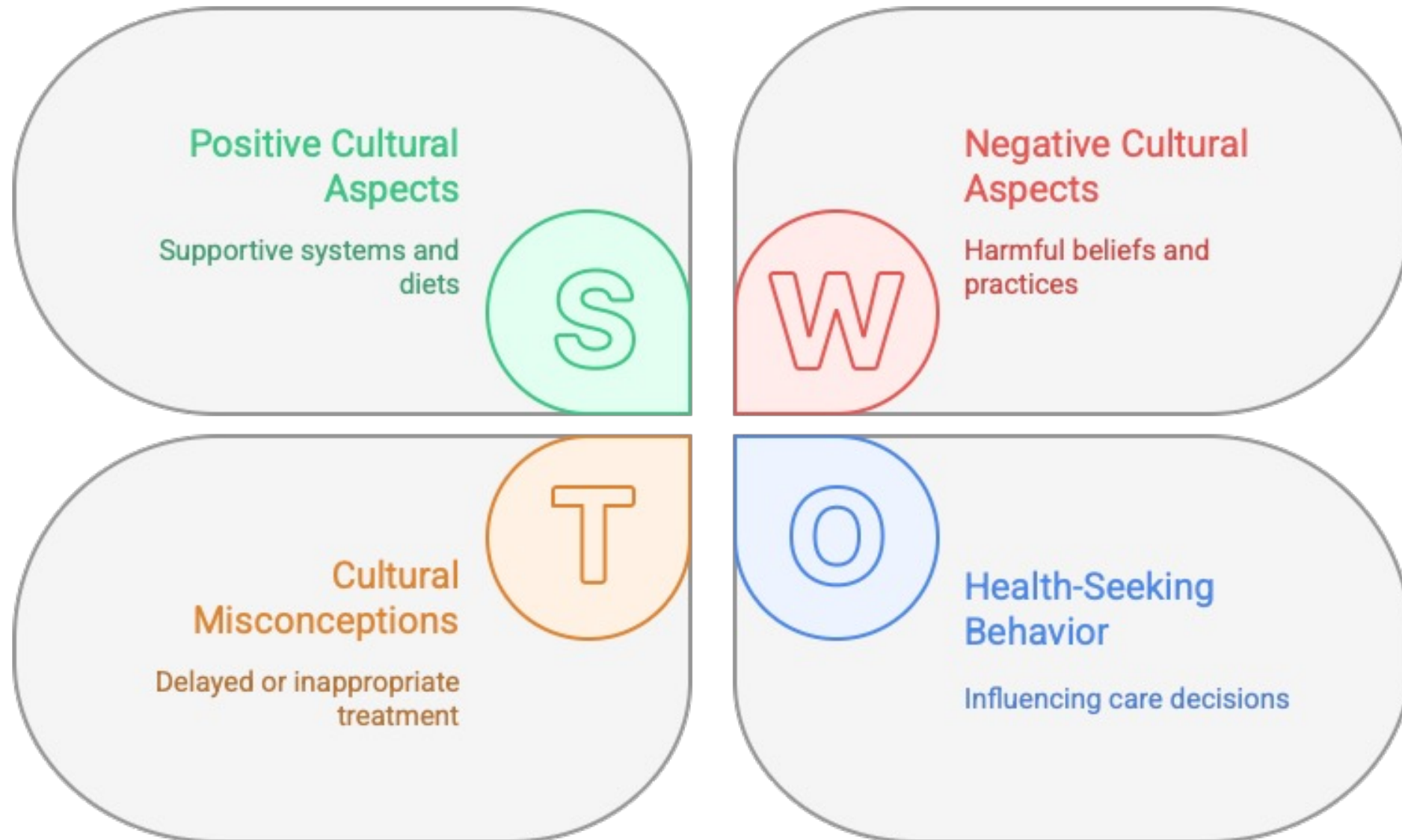
IMPACT OF URBANIZATION ON POPULATION HEALTH



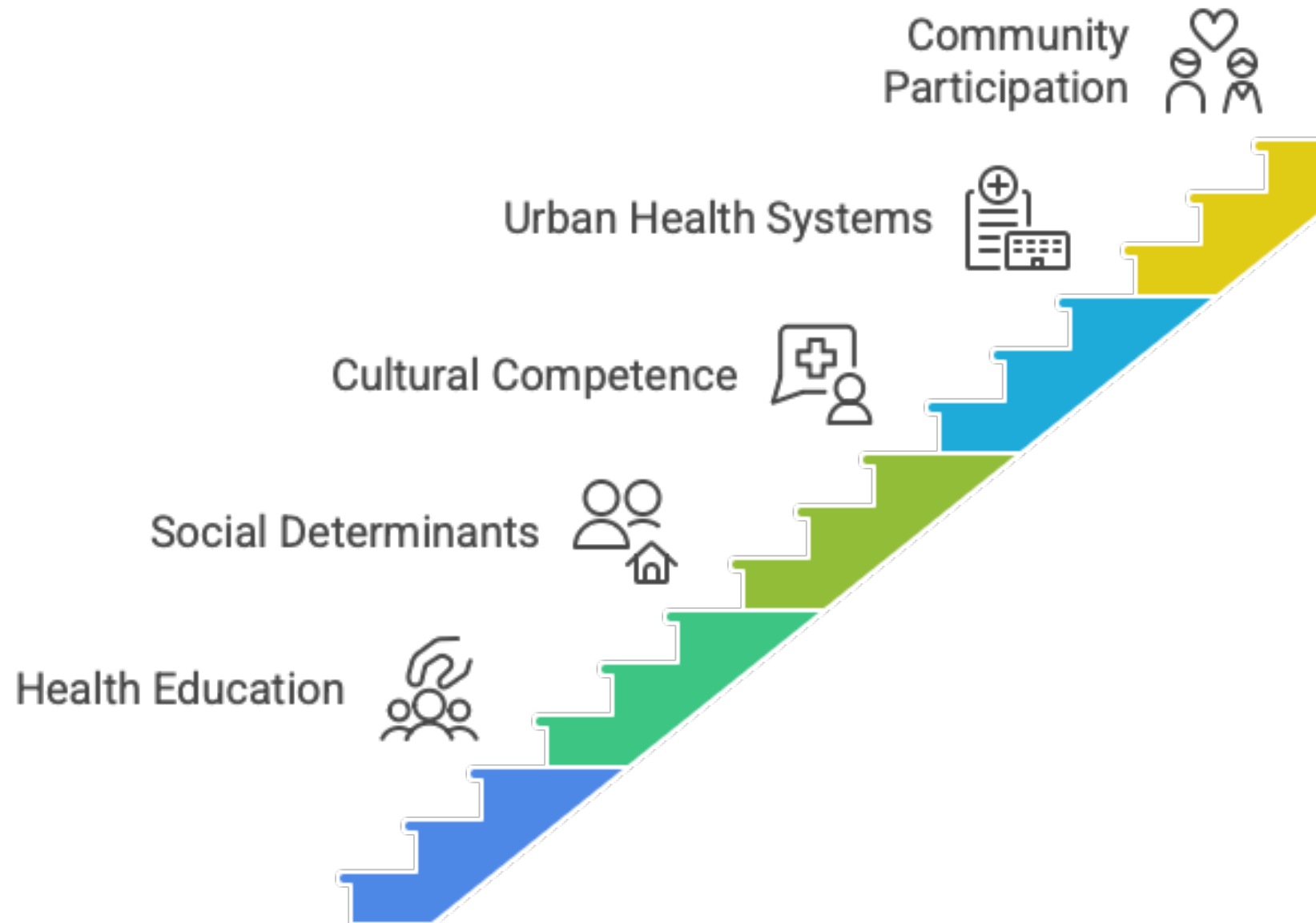
URBAN SLUMS IMPACT ON HEALTH



CULTURAL IMPACTS ON HEALTH

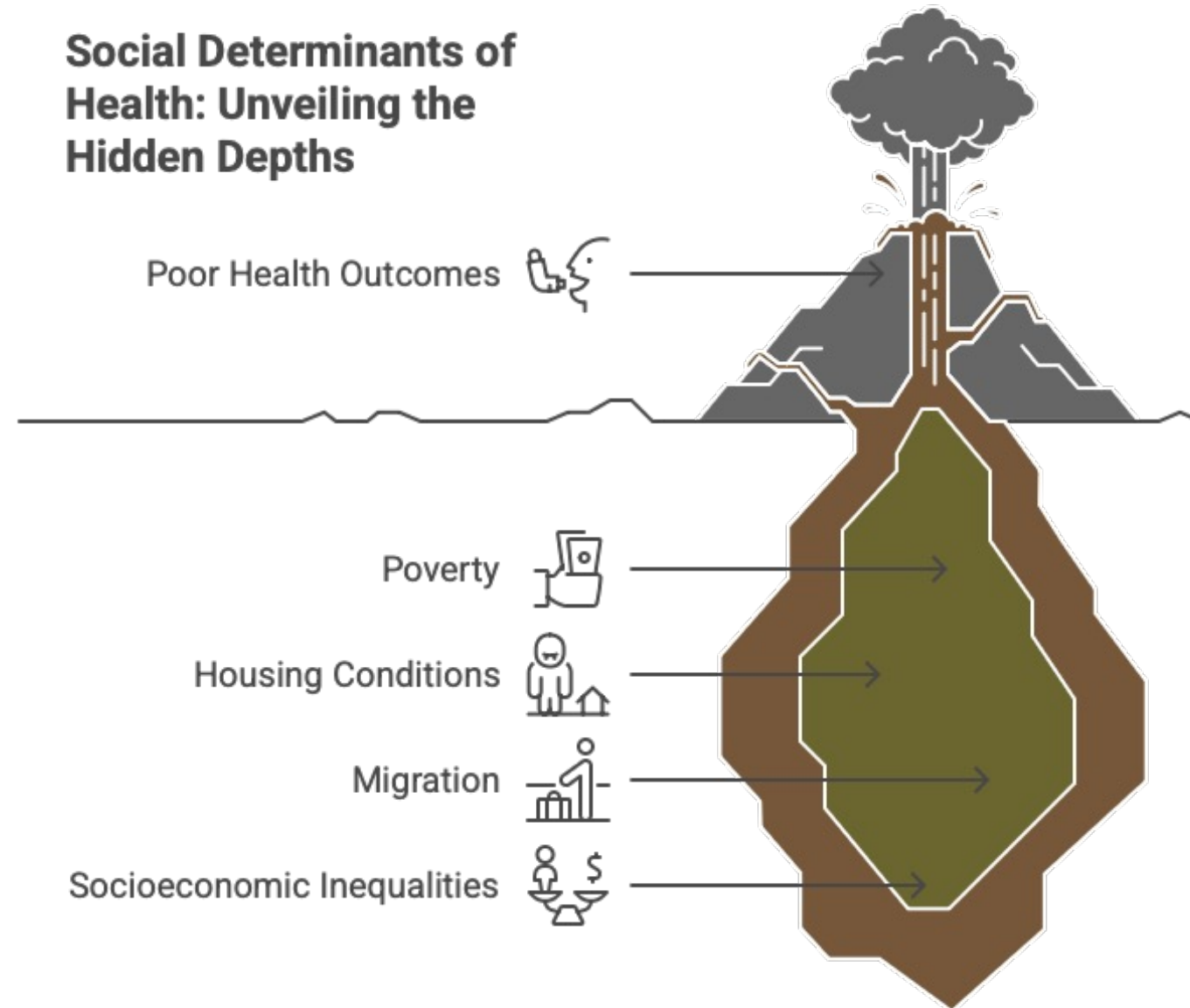


ACHIEVING HEALTH EQUITY

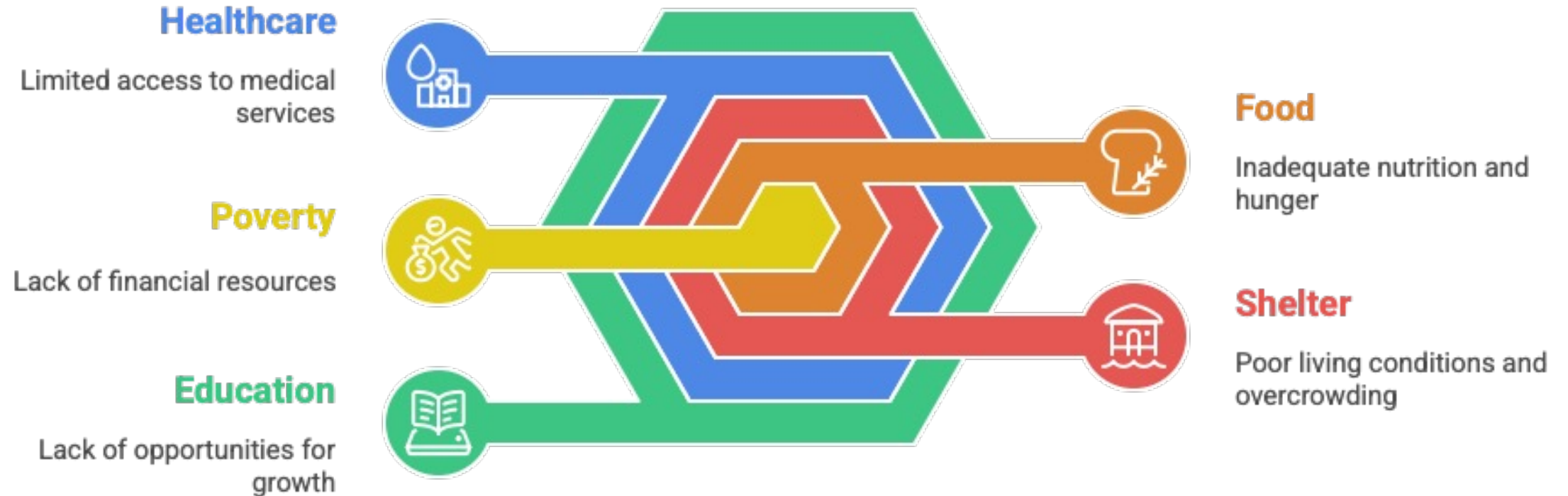


SOCIO-CULTURAL DETERMINANTS OF HEALTH

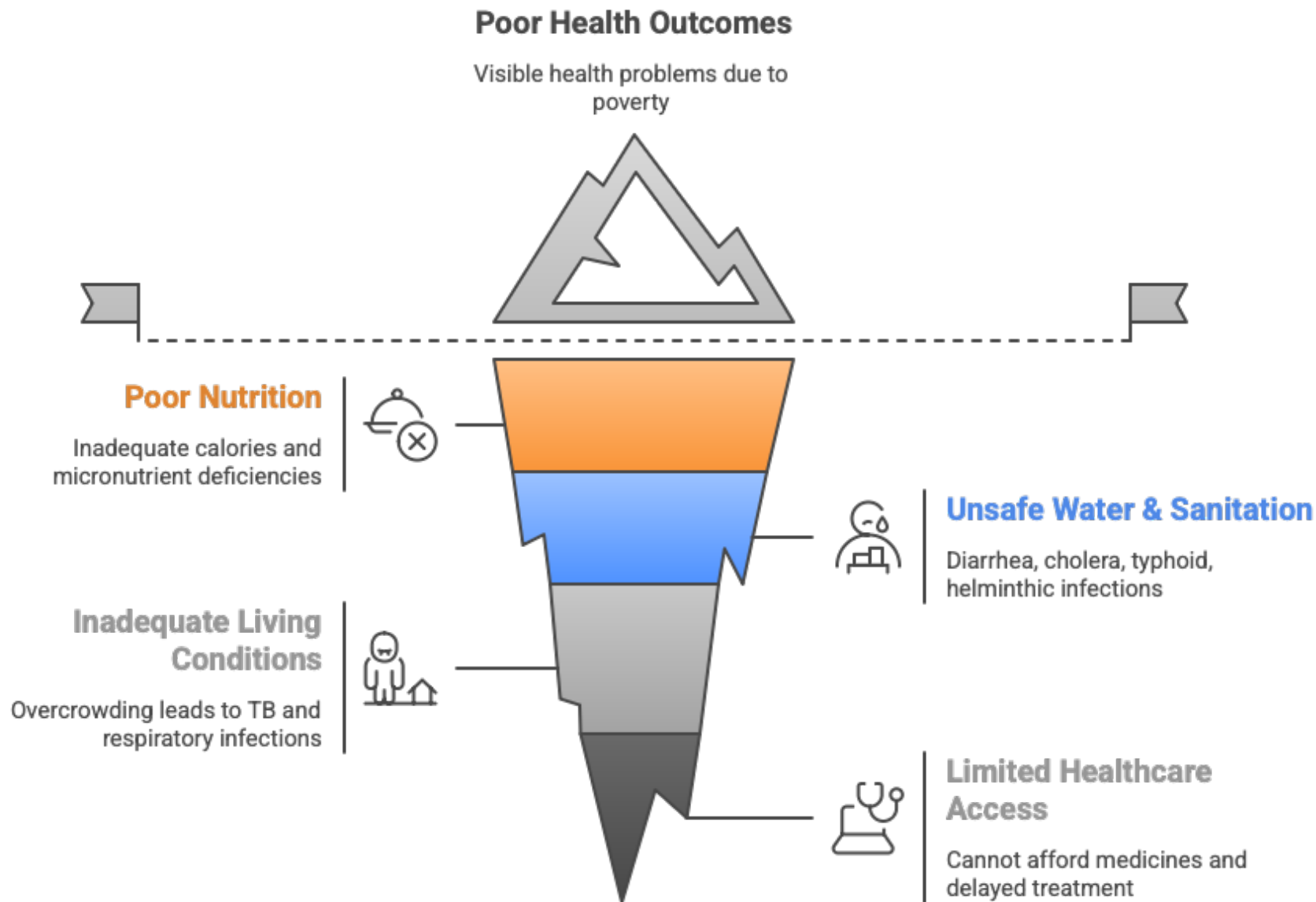
Social Determinants of Health: Unveiling the Hidden Depths



POVERTY AND HEALTH



HIDDEN IMPACT OF POVERTY ON HEALTH



THE POVERTY AND DISEASE CYCLE



Disease Leads to Poverty

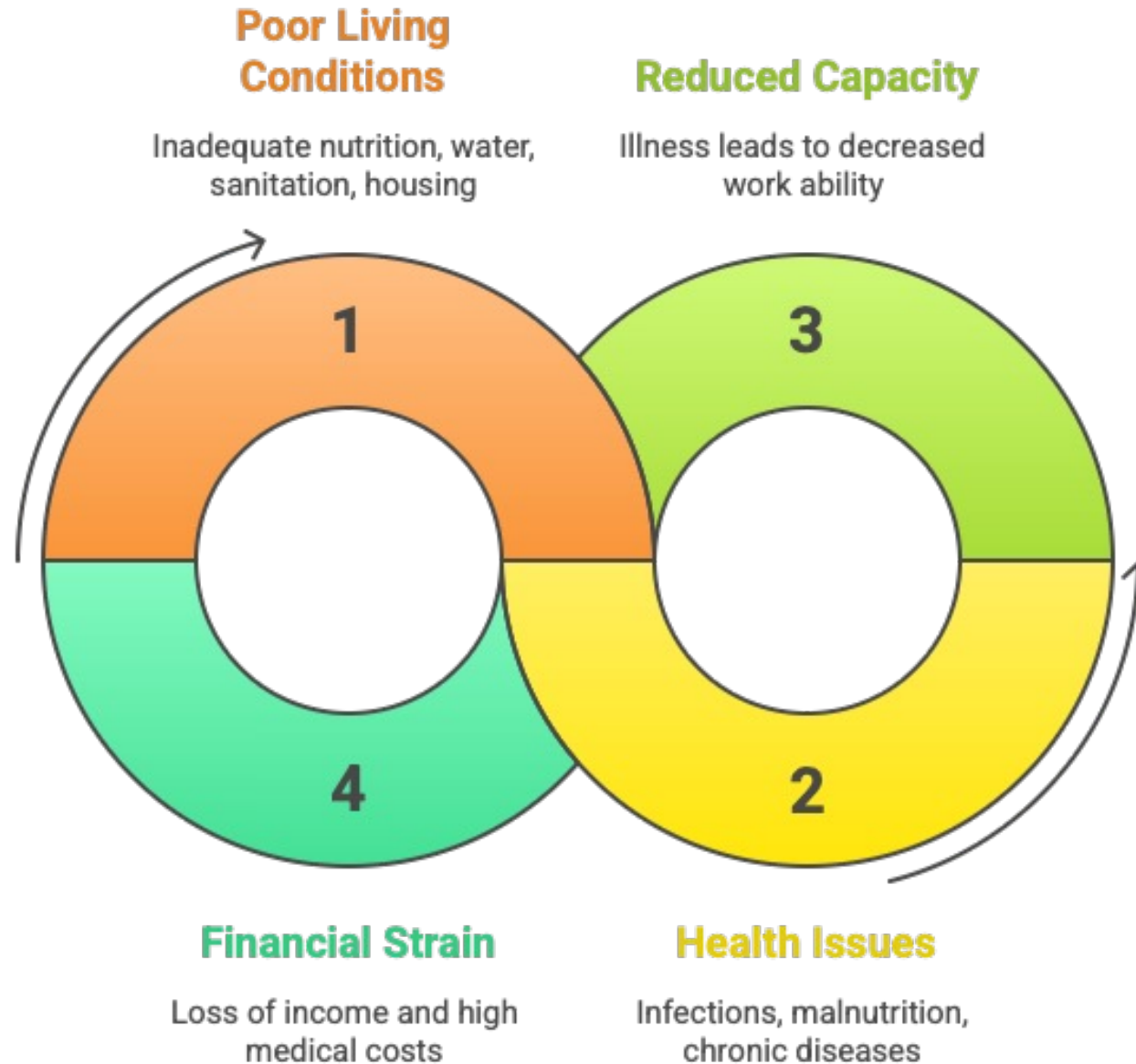
Illness causes loss of wages and high expenses.



Poverty Leads to Disease

Low income and poor conditions lead to illness.

POVER LIVING CONDITIONS AND DISEASE CYCLE



POOVER HOUSING CONDITIONS



Overcrowding

Limited space leads
to close living
conditions



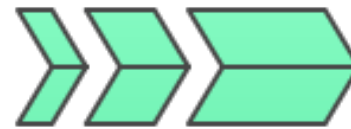
Poor Ventilation

Lack of fresh air
circulation



Dampness and Mold

Moisture promotes
mold growth



Poor Waste Disposal

Inadequate waste
management
systems



Lack of Safe Drinking Water

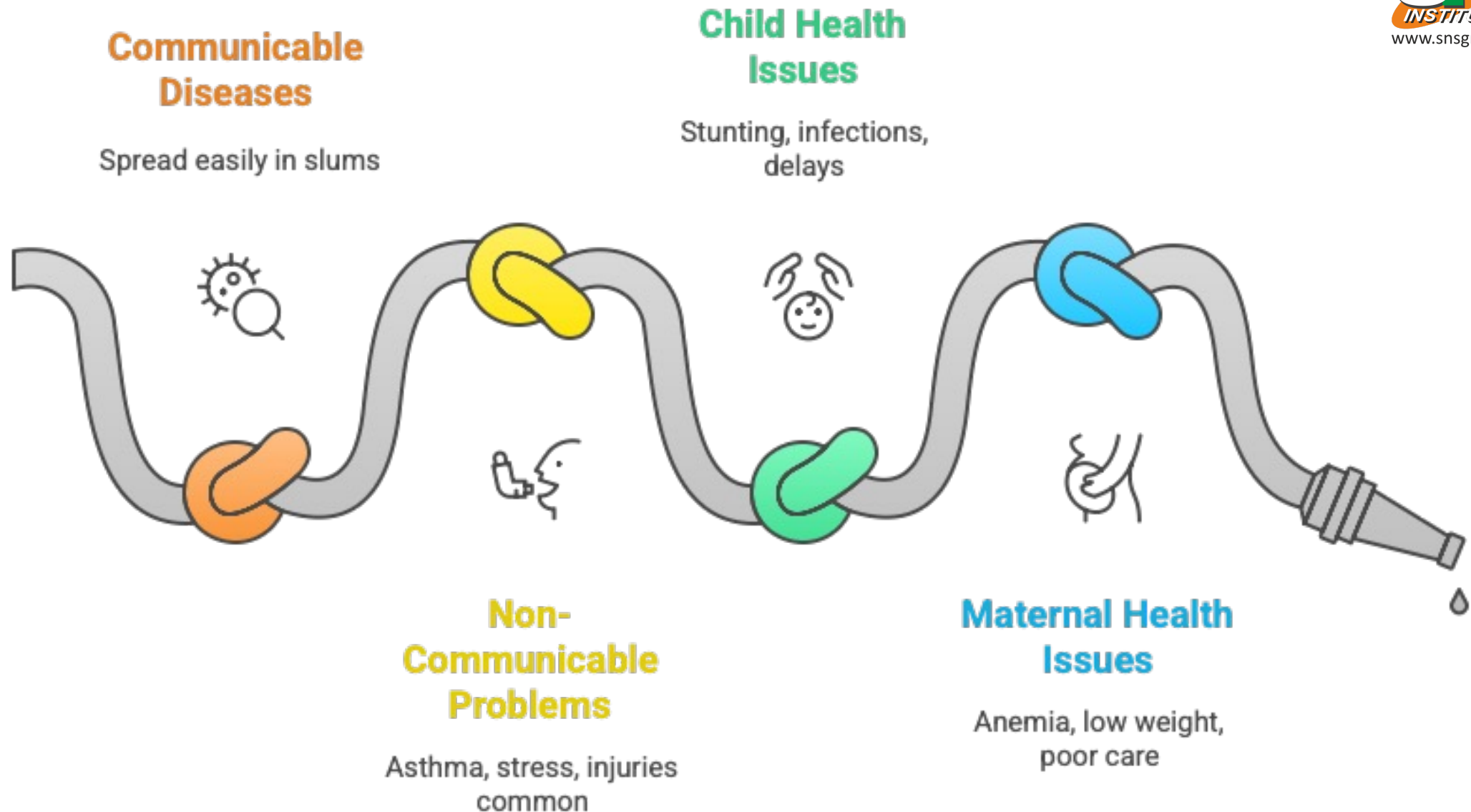
Limited access to
clean water sources



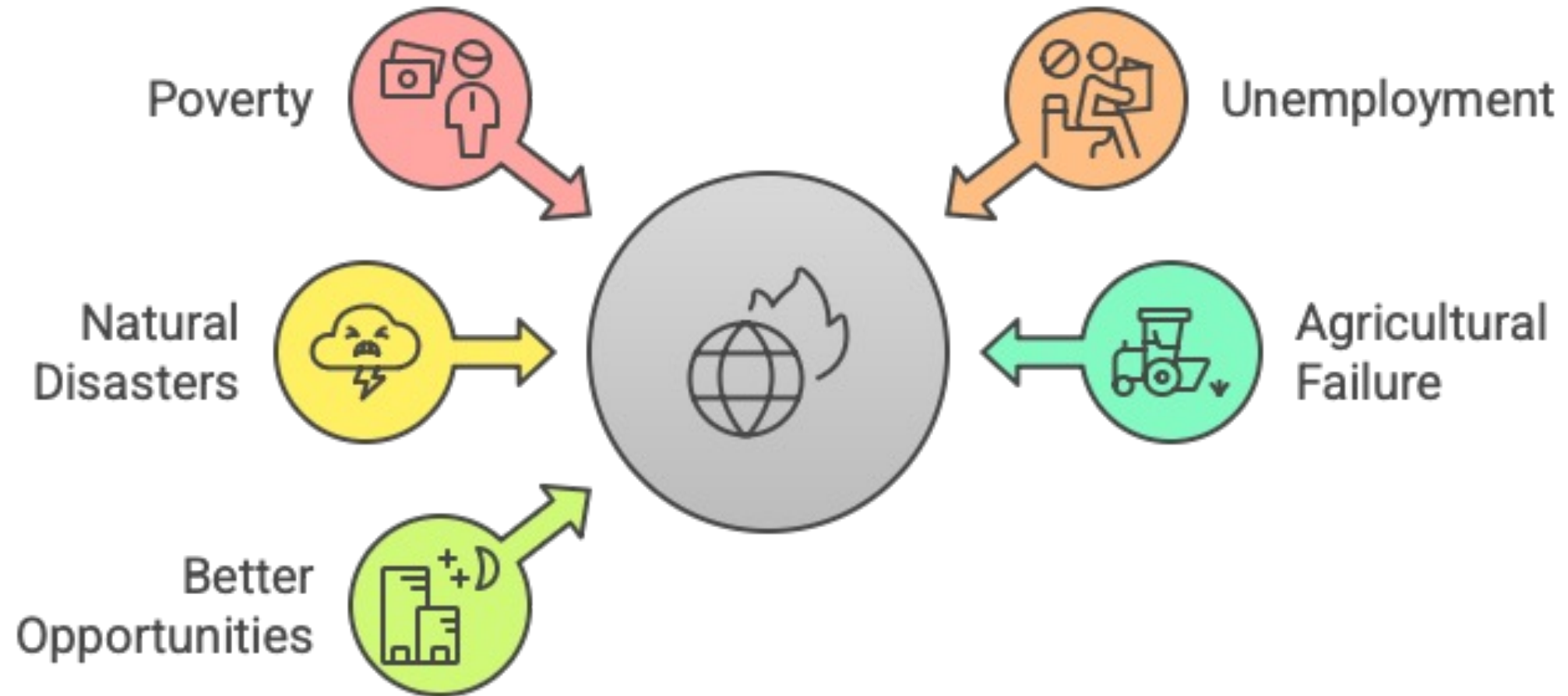
Structural Unsafety

Buildings prone to
collapse

ADDRESSING HEALTH IMPACTS



FACTORS INFLUENCING MIGRATION



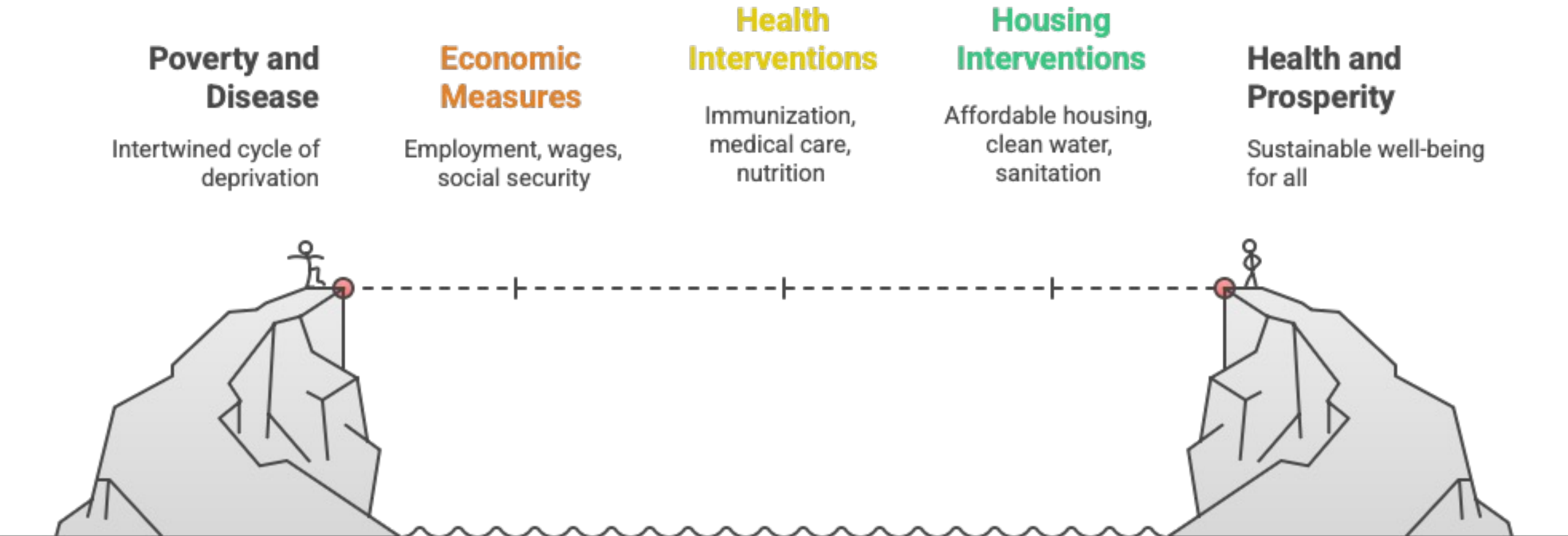
HEALTH CHALLENGES FACED BY MIGRANTS



CYCLE OF POVERTY AND HEALTH



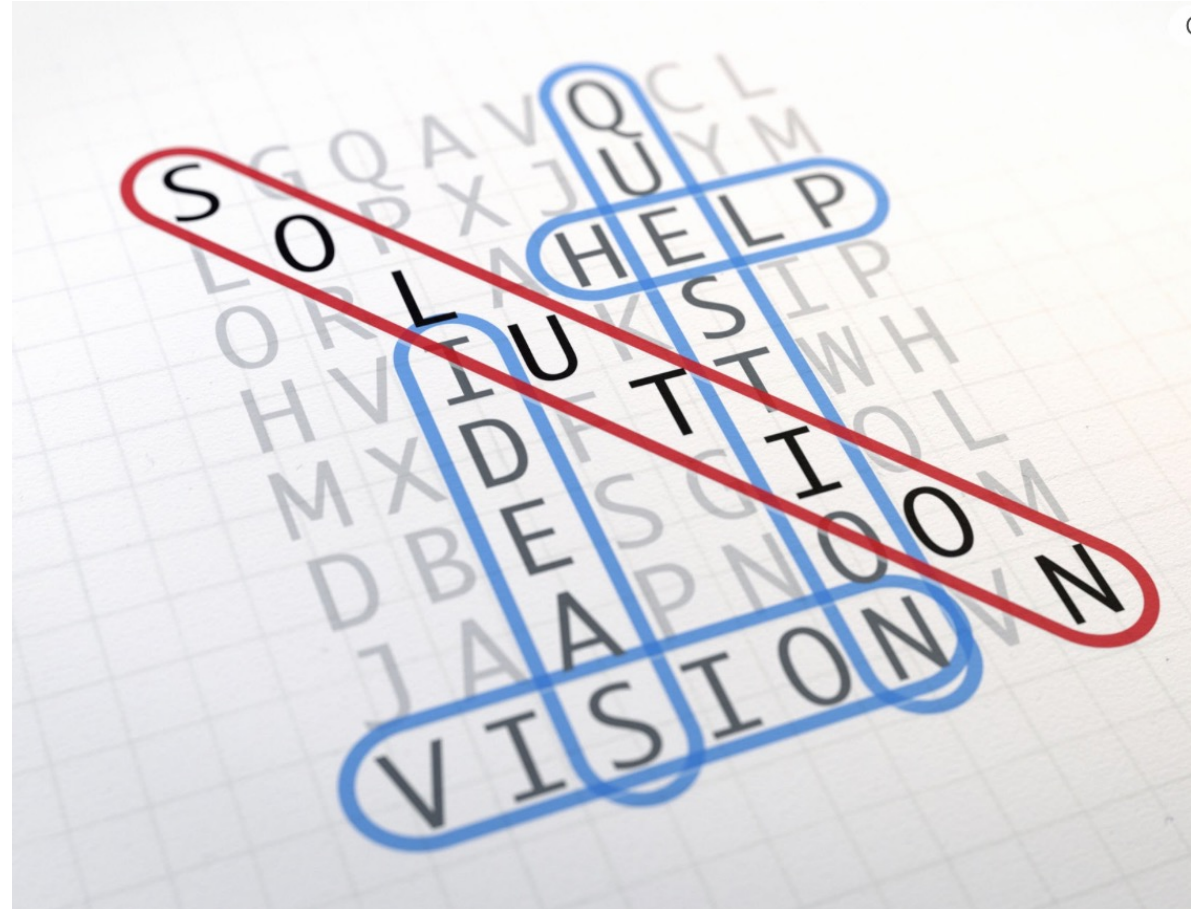
BREAKING THE POVERTY DISEASE CYCLE



ASSESSMENT- 1

This visual riddle combines images and symbols to spell out a phrase related to the theme. Can you decipher it?

Question: What is the phrase represented by the images above?





Question: What is the central theme of this word cloud?



ASSESSMENT- 3

Person	Socio-cultural determinant
A	Poverty
B	Limited access to healthcare
C	Overcrowding
D	Migration

Question: Based on the clues, what is the primary health outcome for each person, and what is their main socio-cultural determinant?



ASSESSMENT- 4

This maze represents the journey of a migrant seeking a healthy community. The path is filled with obstacles. Your goal is to find the correct path from "MIGRANT" to "HEALTHY COMMUNITY" by avoiding all the barriers.

Question: Can you trace the correct path through the maze?

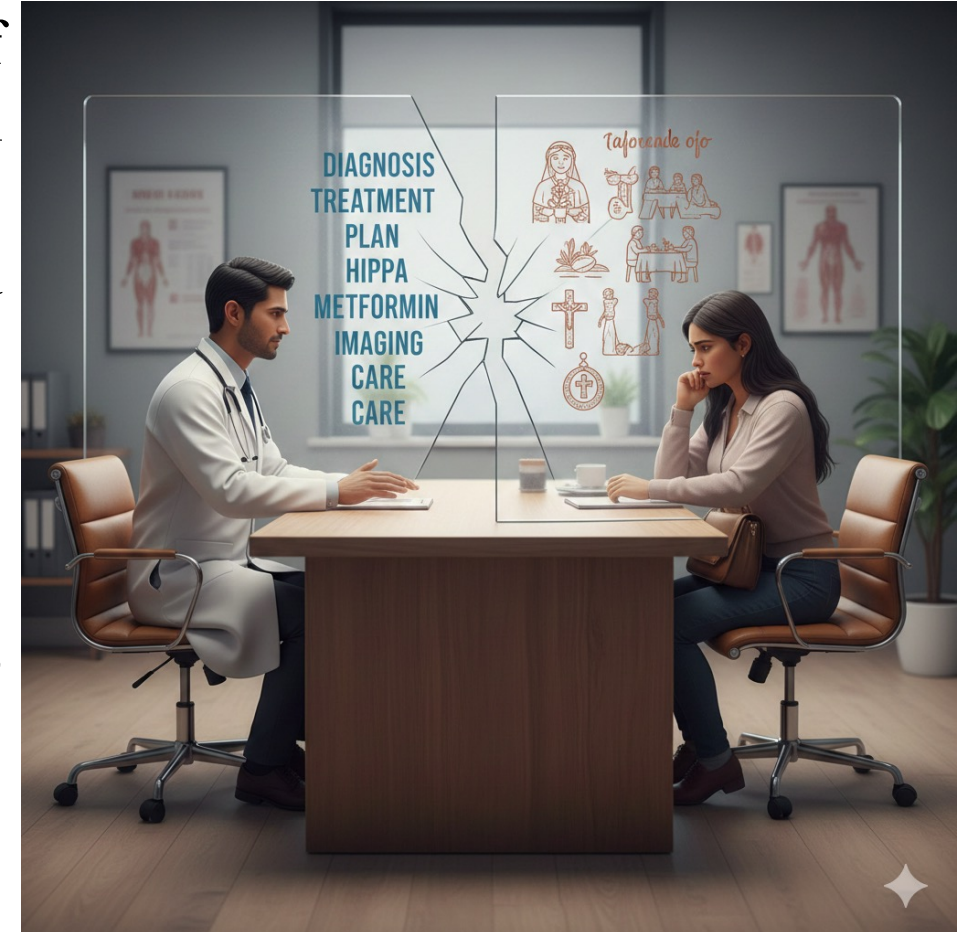


ASSESSMENT- 5

Question: Based on public health research, which of the following best **explains** how cultural barriers, such as language differences and conflicting health beliefs, can impact the health outcomes of marginalized communities?

Answer Options:

- 1.They encourage individuals to seek preventive care.
- 2.They create distrust in healthcare systems, leading to lower service use.
- 3.They have no significant effect on health outcomes.
- 4.They promote better understanding of health issues.



REFERENCES

1. Short Textbook of Preventive and Social Medicine, Prabhakara GN, 2nd Edition, 2010, ISBN: 9789380704104, JAYPEE Publications
2. Textbook of Preventive and Social Medicine (Mahajan and Gupta), Edited by Roy Rabindra Nath, Saha Indranil, 4th Edition, 2013, ISBN: 9789350901878, JAYPEE Publications
3. Review of Preventive and Social Medicine (Including Biostatistics), Jain Vivek, 6th Edition, 2014, ISBN: 9789351522331, JAYPEE Publications
4. Essentials of Community Medicine—A Practical Approach, Hiremath Lalita D, Hiremath Dhananjaya A, 2nd Edition, 2012, ISBN: 9789350250440, JAYPEE Publications

Thank you