

SNS COLLEGE OF PHARMACY AND HEALTH SCIENCES

Affiliated To The Tamil Nadu Dr. MGR Medical University, Chennai

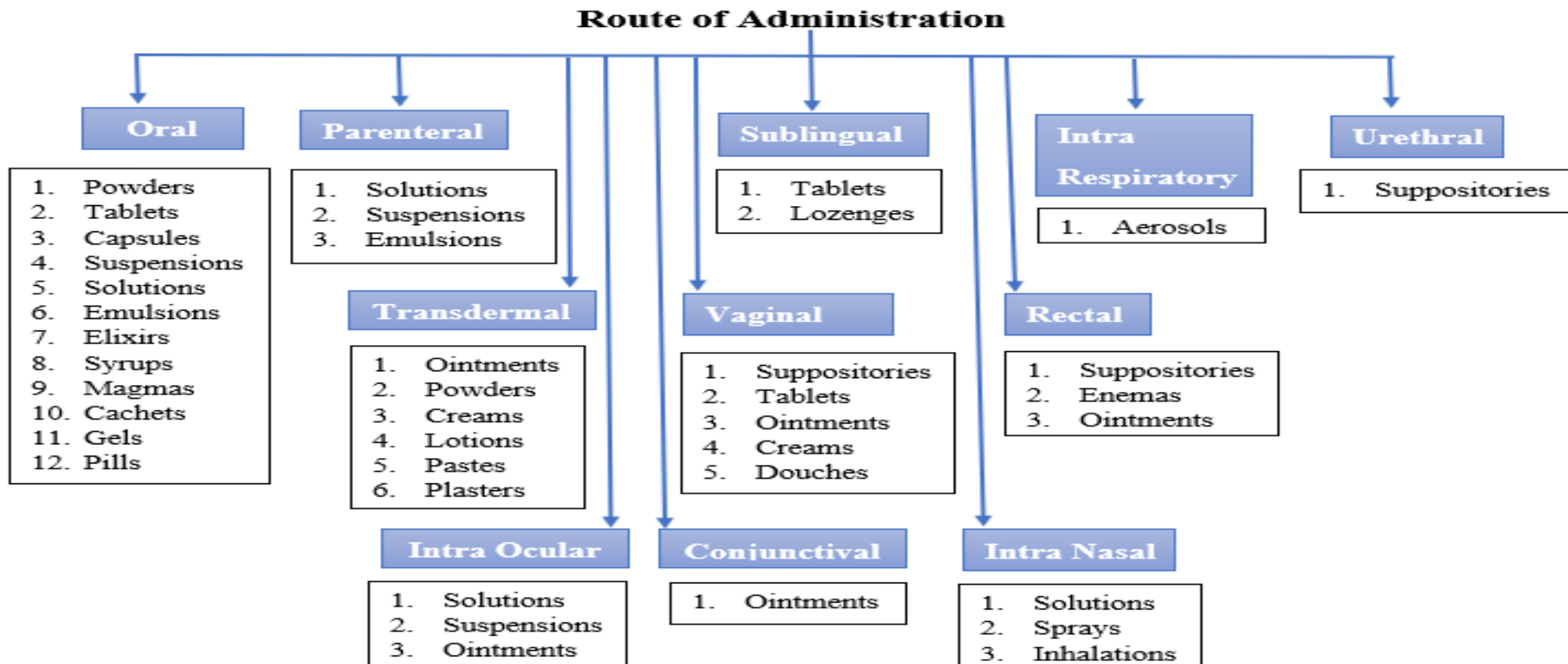
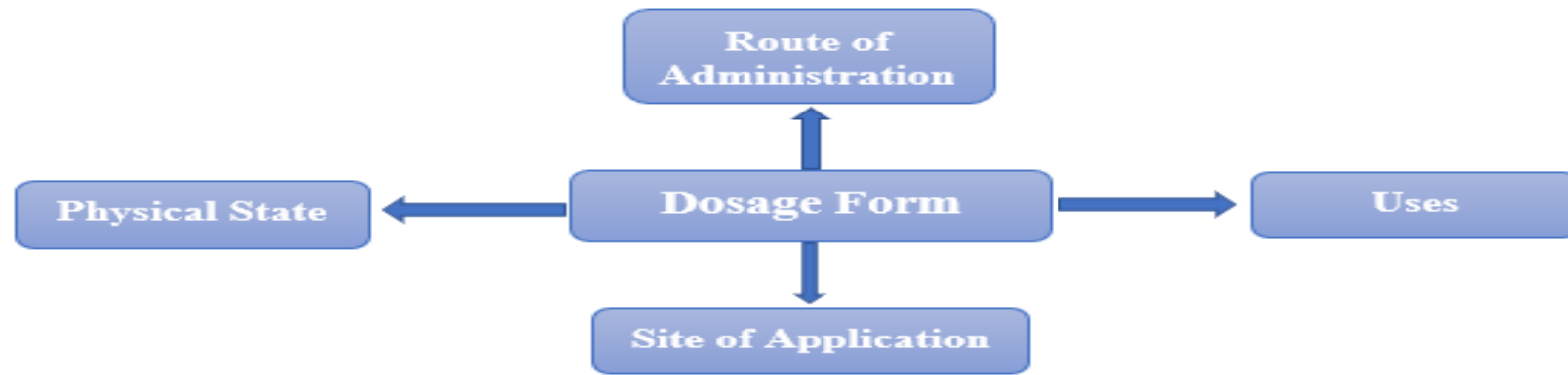
Approved by Pharmacy Council of India, New Delhi.

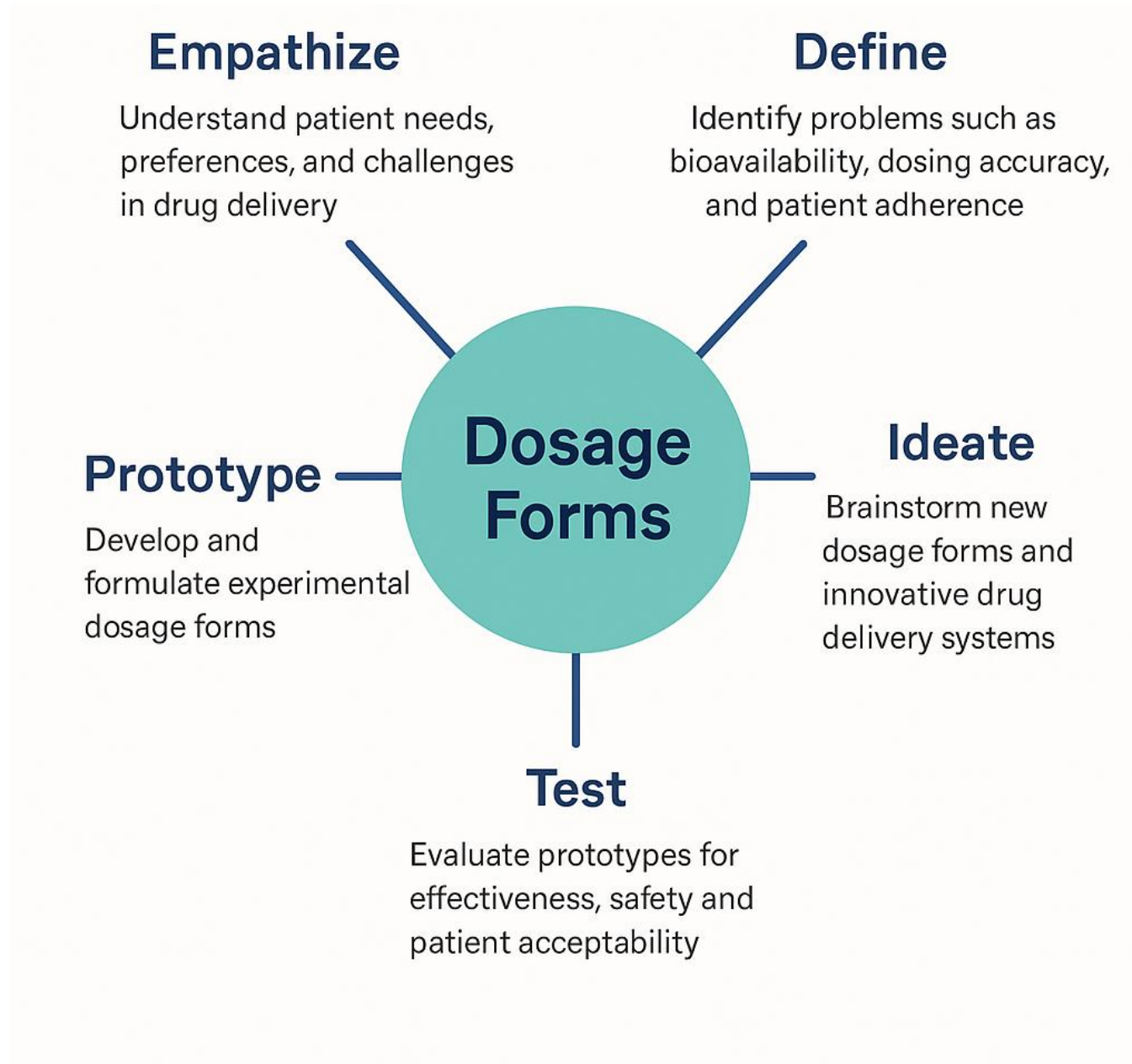
Coimbatore -641035

COURSE NAME: PHARMACEUTICS I

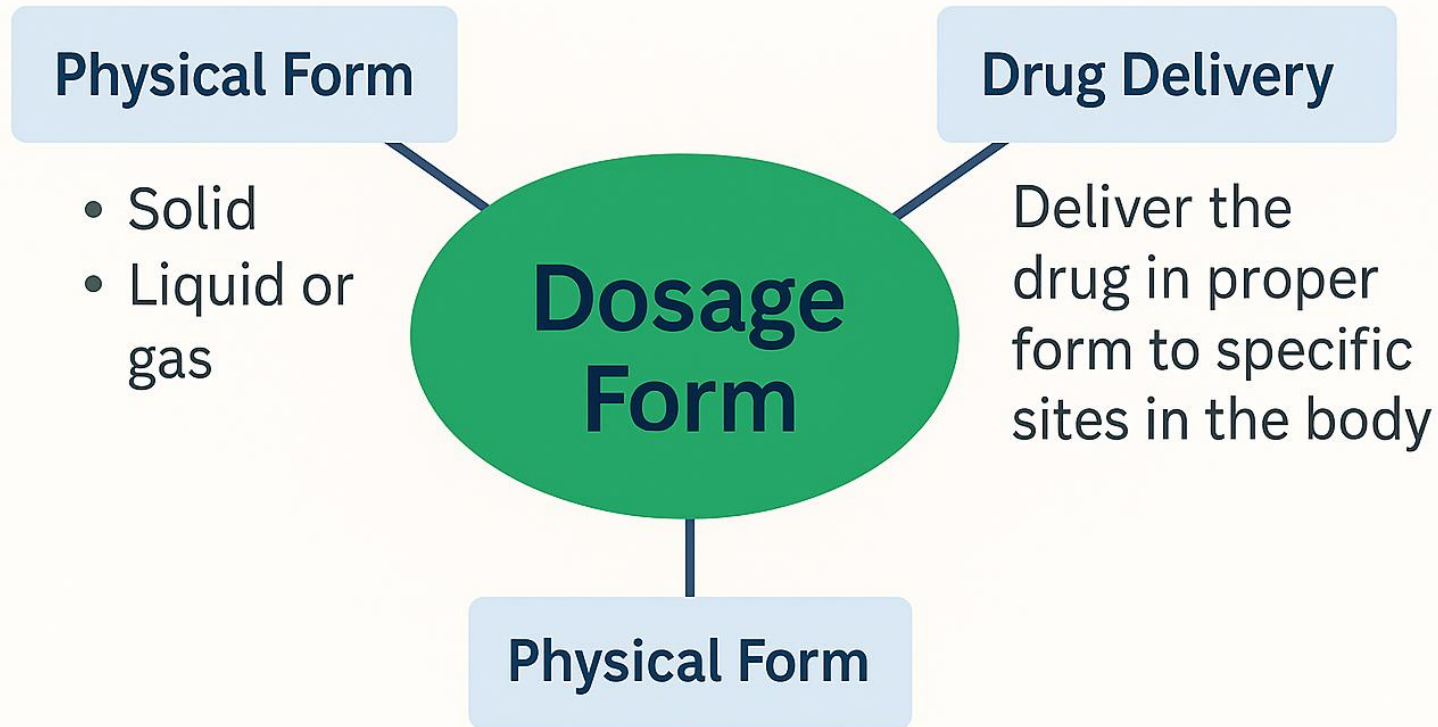
(BP 103 T) I YEAR / I SEM

**TOPIC: PHARMACEUTICAL DOSAGE
FORMS- MONOPHASIC**

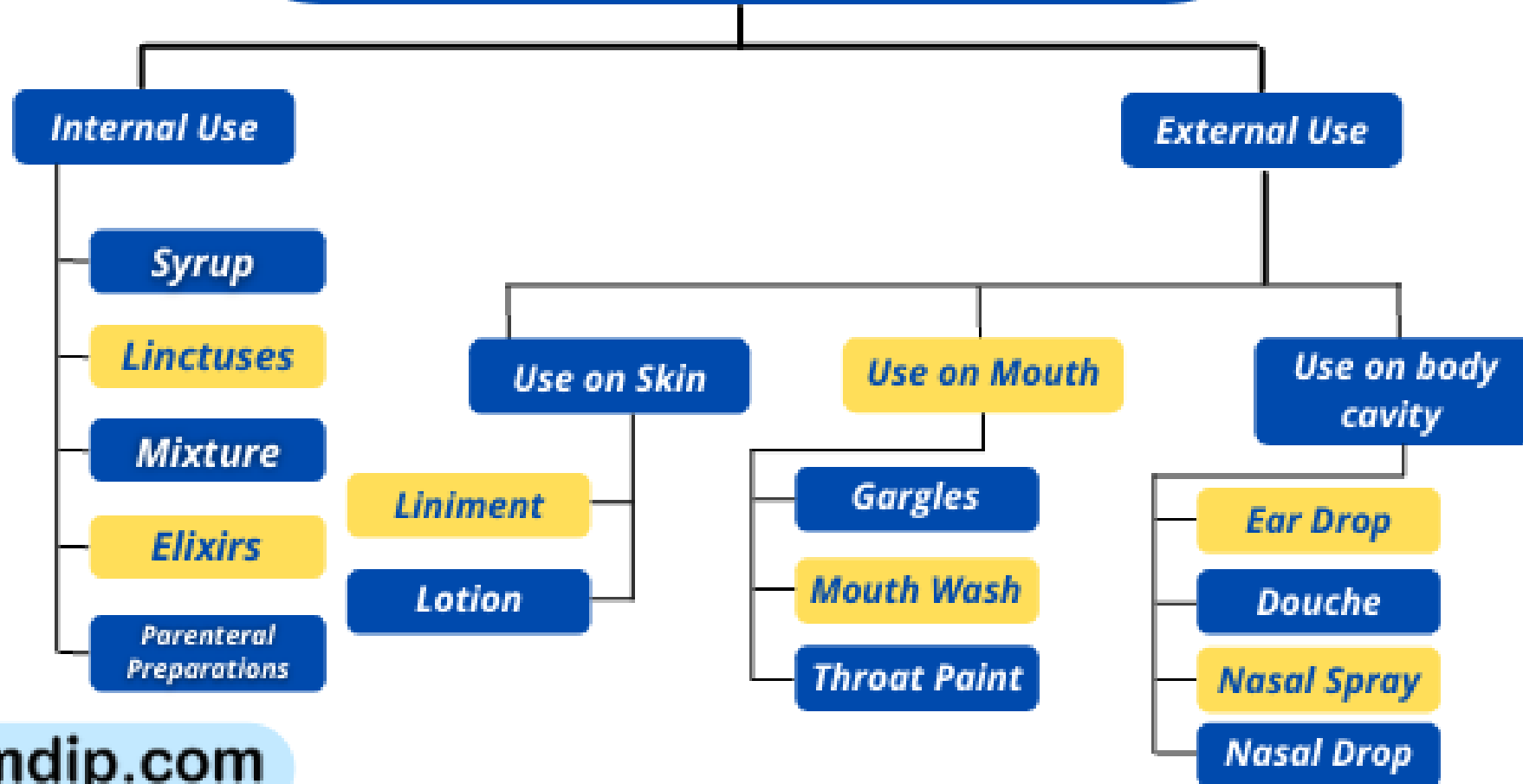


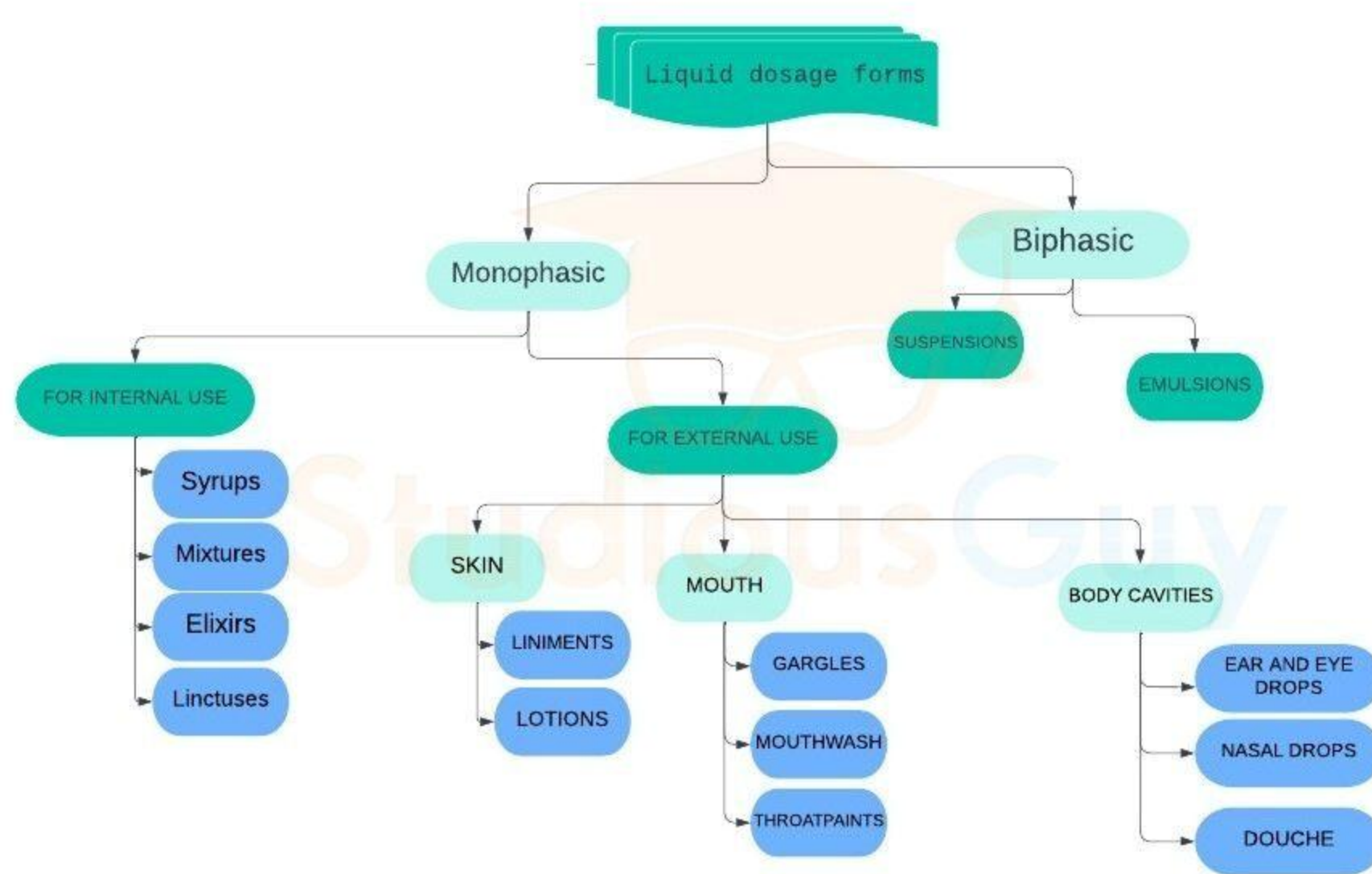


What is a Dosage Form?

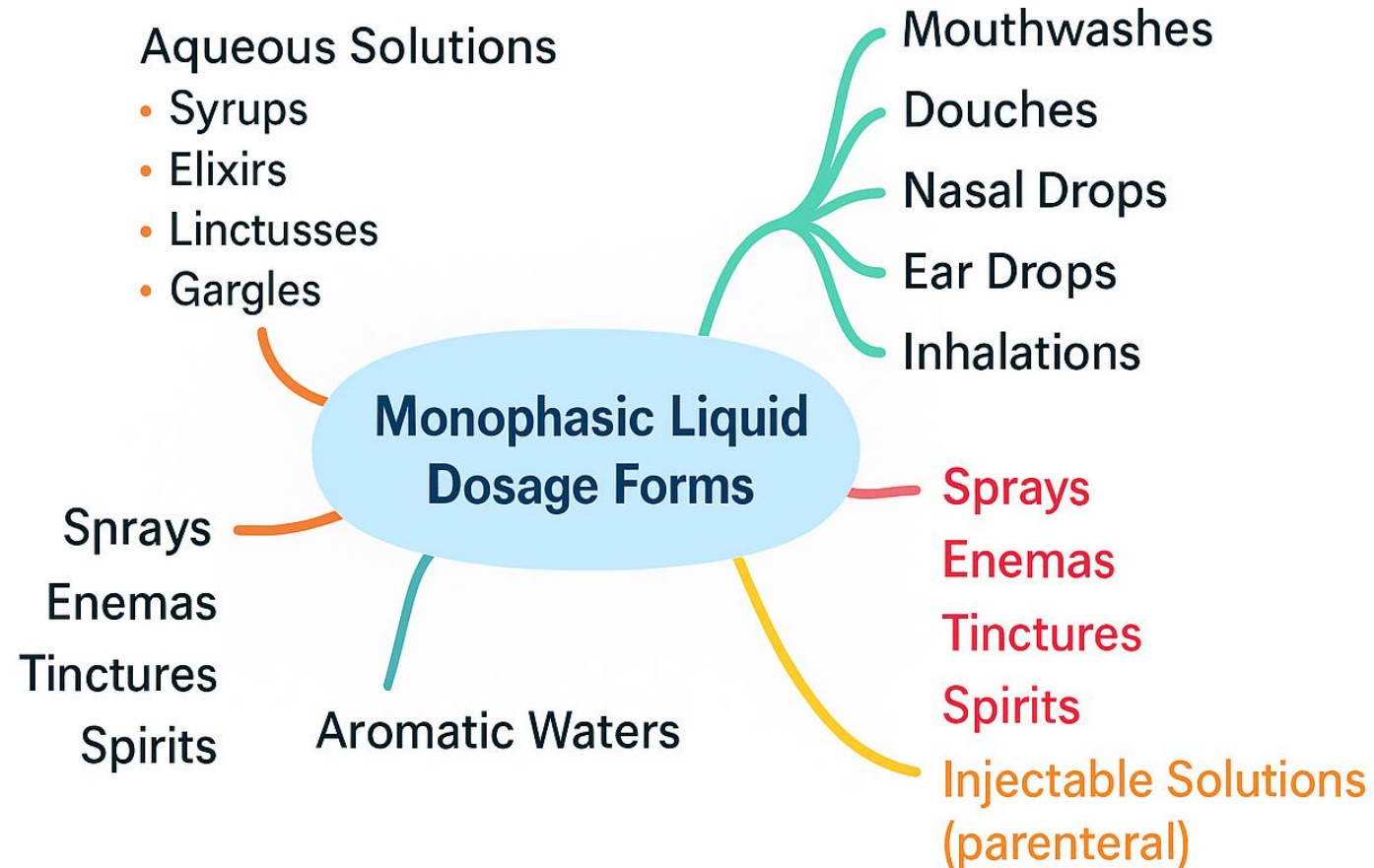


Monophasic Liquid Dosage Form



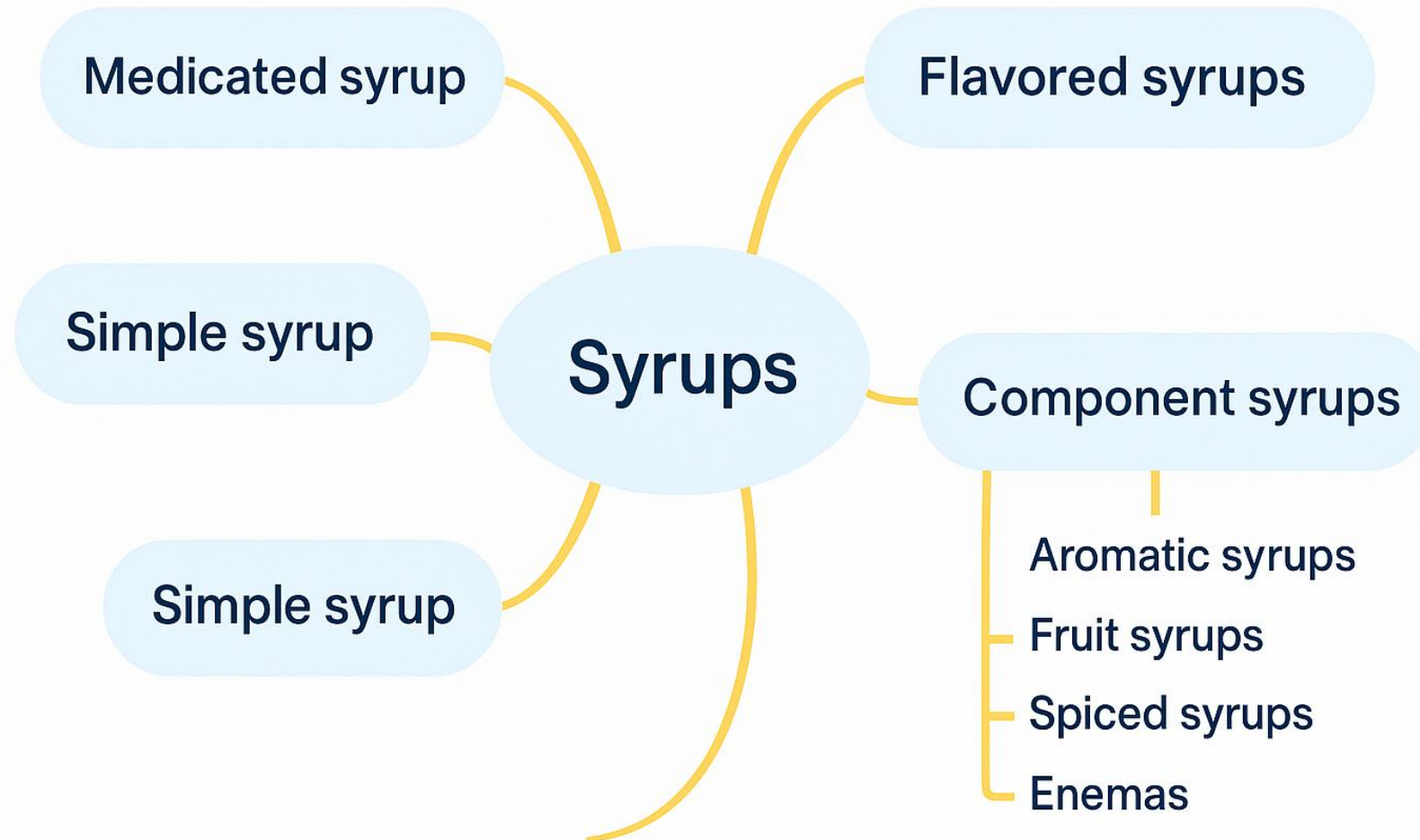


Monophasic Liquid Dosage forms



Monophasic liquids (Solutions)





SYRUPS

COMPOSITION OF SYRUPS

ACTIVE PHARMACEUTICAL INGREDIENT

PRESERVATIVES

SWEETNING AGENT

VISCOSITY MODIFIER

FLAVORANT & COLORANT

SOLVENT/VEHICLE



Solutions and Elixirs

Solutions

Definition: Liquid preparations containing one or more dissolved substances

Common solvents:
Water or aqueous base used, sometimes alcohol or glycerin

Elixirs

Definition: Sweetened, flavored solutions of alcohol and water

Alcohol content:
5-40% alcohol, acts as solvent and preservative



LINCTUSES

Linctuses

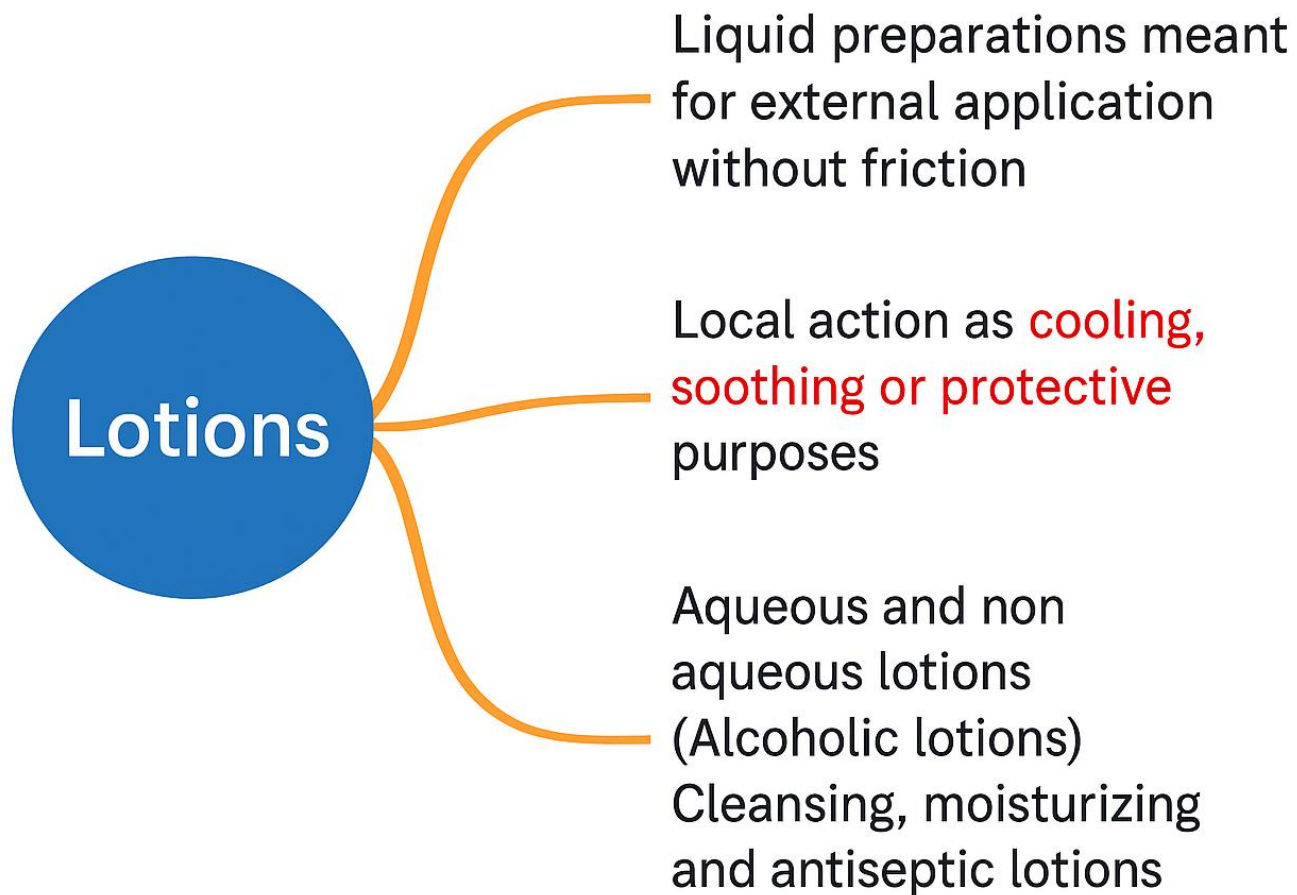
Viscous, liquid oral preparations generally prescribed for cough relief, e.g.: Codeine Linctus

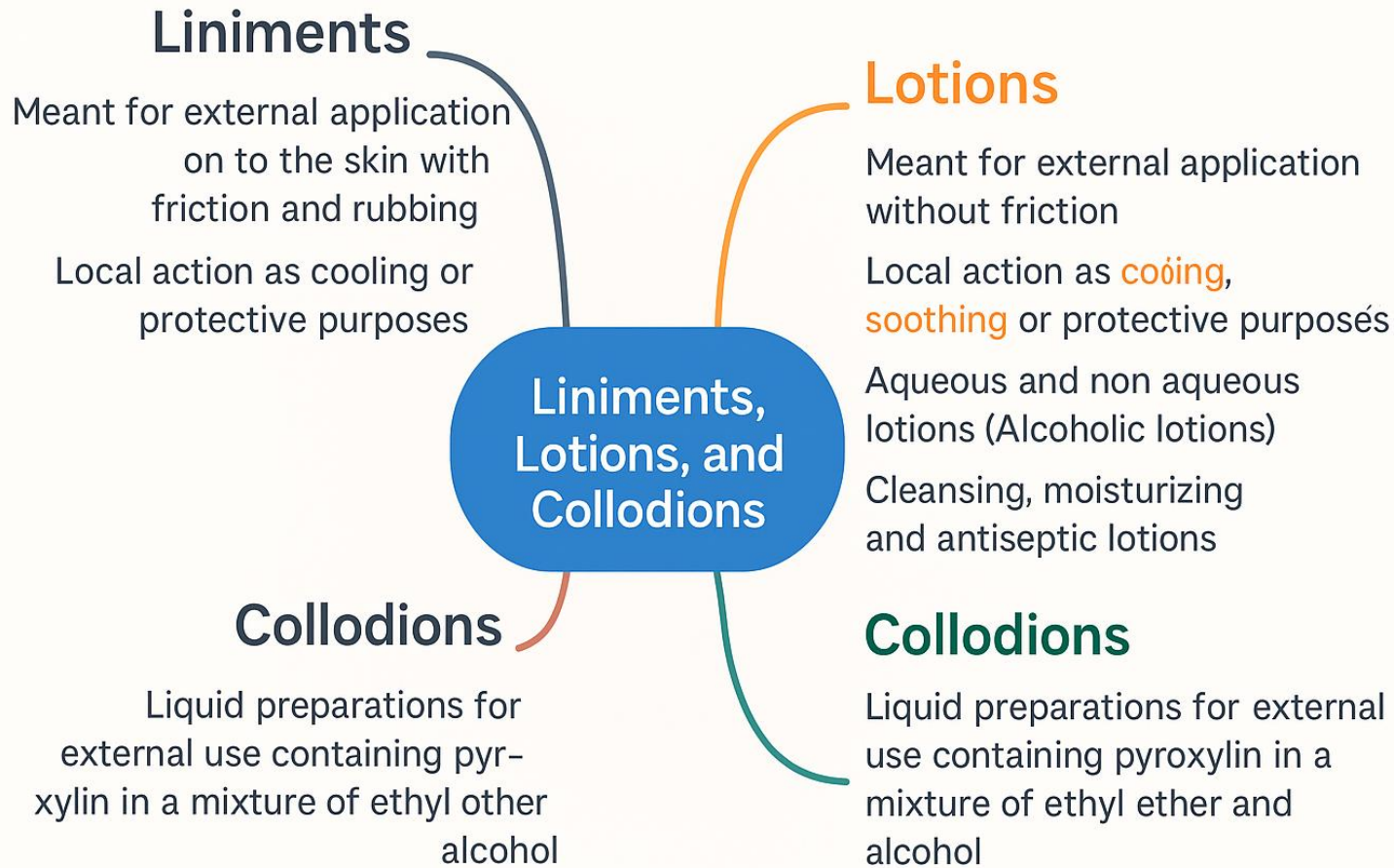
Contains demulcent, sedative & expectorant medicaments

5 mL small dose volume sipped and swallowed slowly



LOTIONS





EAR DROPS

HOW TO USE EAR DROPS CORRECTLY

- 1**
Wash your hands

- 2**
Warm the bottle

- 3**
Shake the bottle & remove the cap

- 4**
Tilt your head or lie on your side

- 5**
Pull your ear backwards

- 6**
Apply the ear drop

- 7**
Cap and store the bottle


 Hearing Partners



NASAL DROPS



EYE DROPS



ENEMAS





Assessment

- **Which of the following** is an example of a solid dosage form?
a) Syrup b) Tablet c) Ointment d) Injection
- **What is the main purpose** of coating a tablet?
a) To increase cost b) To protect from moisture and gastric juice
c) To change color d) To increase hardness
- **Which dosage form** is designed for **local application to the skin**?
a) Capsule b) Ointment c) Elixir d) Suppository
- **Modified release dosage forms** are mainly used to:
a) Deliver the drug rapidly
b) Control the rate and duration of drug release
c) Increase toxicity d) Improve taste
- **Bioavailability** of a drug can be improved by:
a) Poor formulation design b) Use of gastro-retentive dosage forms
c) Incomplete dissolution d) Light exposure

REFERENCES

- Remington: *The Science and Practice of Pharmacy*, 22nd Edition, Pharmaceutical Press.
- Kokate C.K., Purohit A.P., Gokhale S.B. – *Textbook of Pharmacy*.
- B. Suresh, S. B. Gokhale – *Pharmacy Education in India*.
- Lachman L., Lieberman H.A., Kanig J.L. – *The Theory and Practice of Industrial Pharmacy*
- Sharma, B.D. *Pharmacy Education in India: Past, Present and Future*. Indian Journal of Pharmaceutical Education and Research (IJPER).
- Rao, N. R. (2017). *Evolution of Pharmacy Profession in India*. International Journal of Pharmaceutical Sciences.
- Indian Journal of History of Science – Special issues on Ayurveda and traditional medicine.



THANK YOU