

# **SNS COLLEGE OF PHARMACY AND HEALTH SCIENCES**



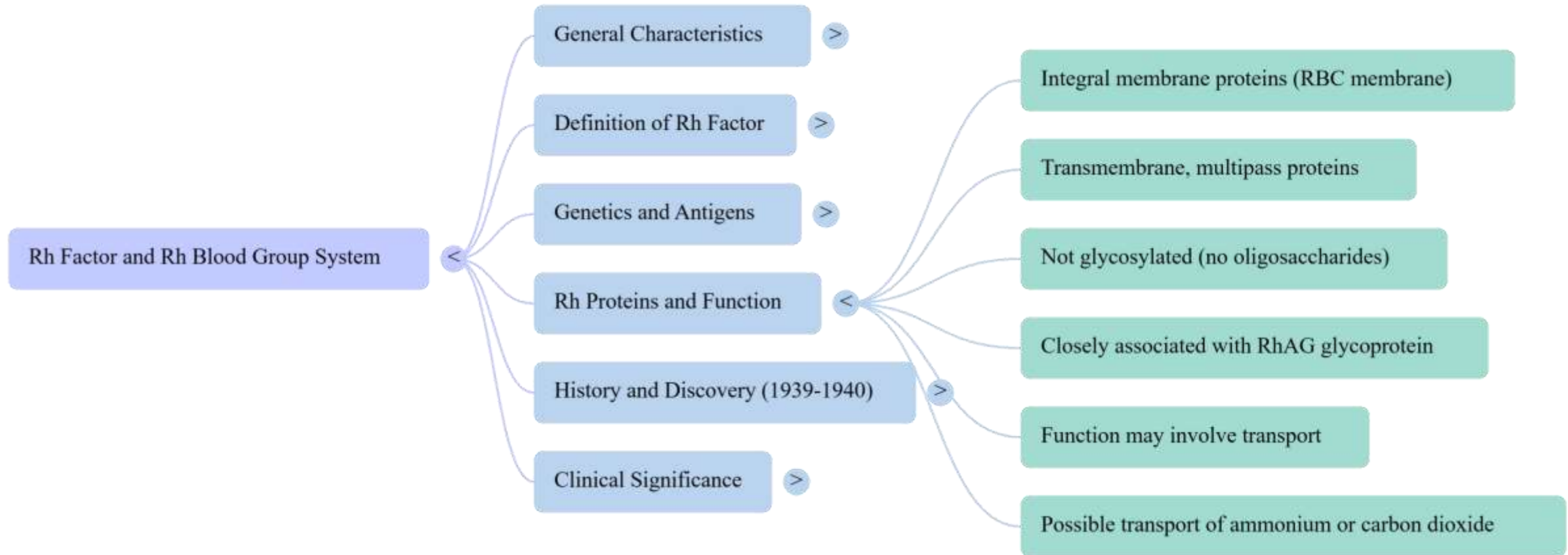
Affiliated To The Tamil Nadu Dr. MGR Medical University, Chennai  
Approved by Pharmacy Council of India, New Delhi. Coimbatore -641035

**COURSE NAME : HUMAN ANATOMY & PHYSIOLOGY (BP301 T)**

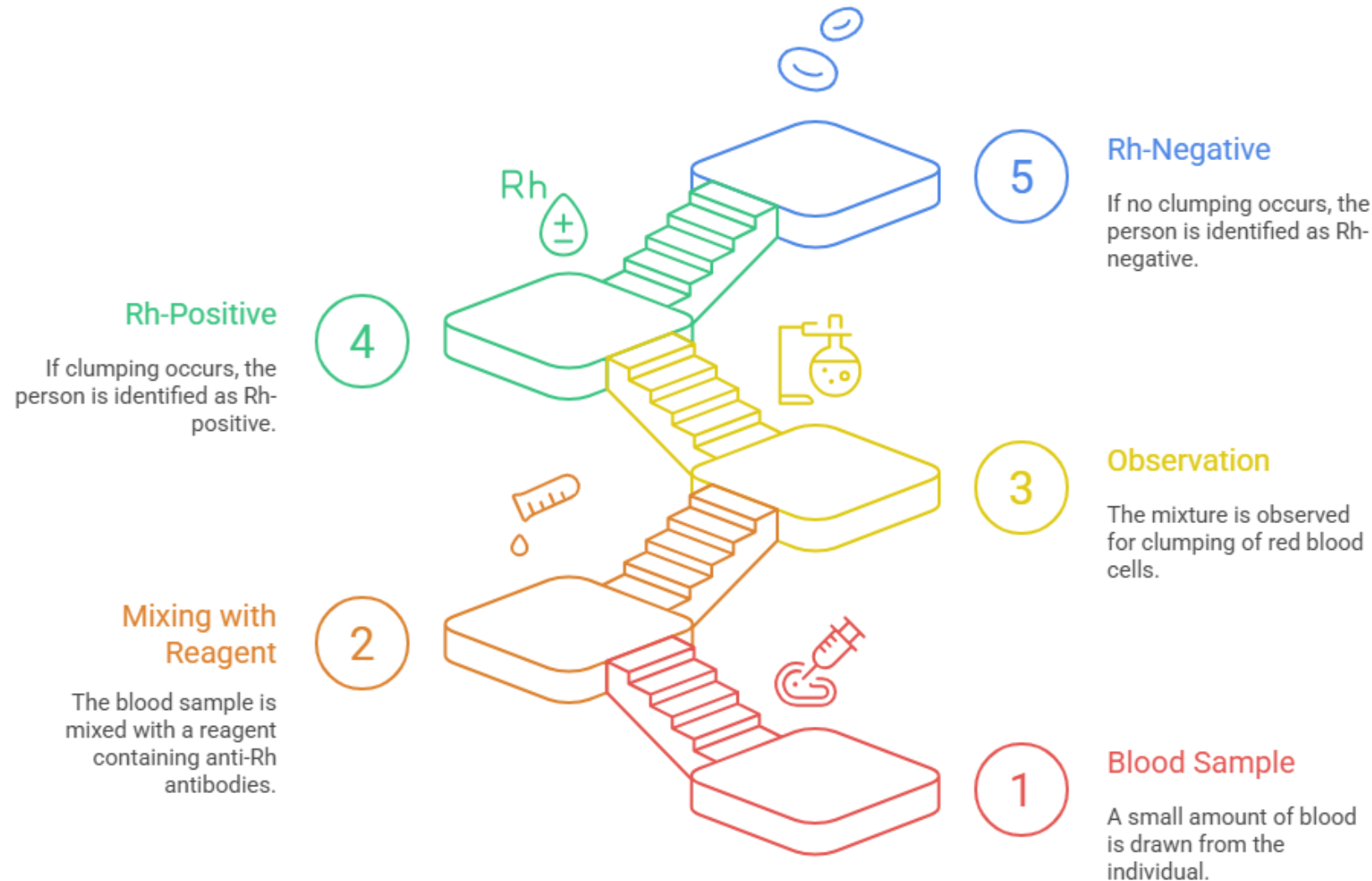
**YEAR : I SEM/I YEAR**

**TOPIC : RH FACTOR**

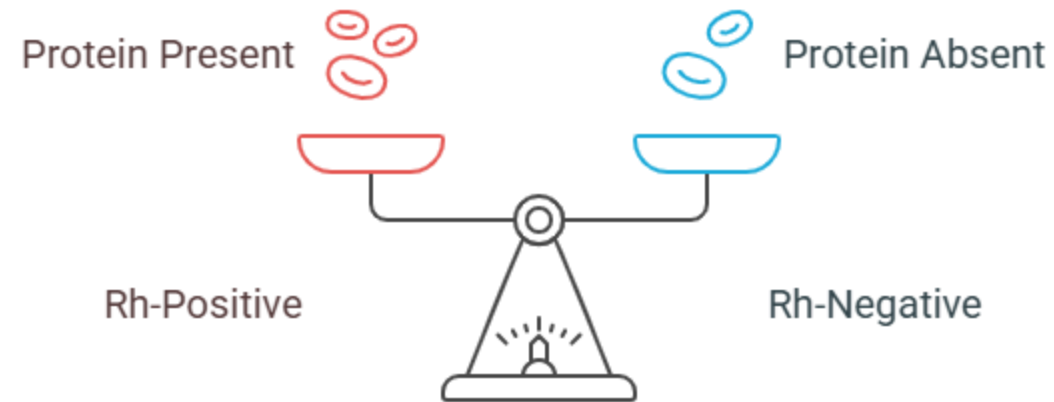
# MIND MAP



## Determining Rh Factor

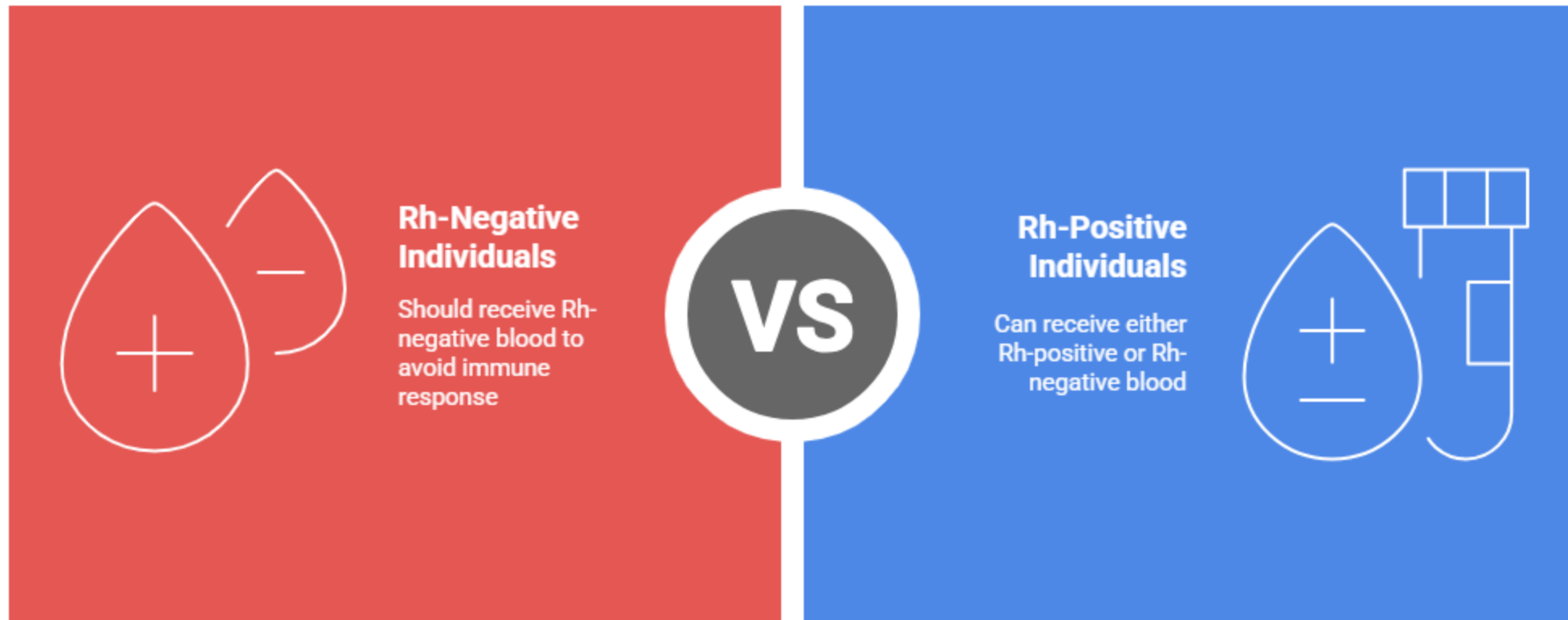


## Understanding Rh Factor in Blood Types



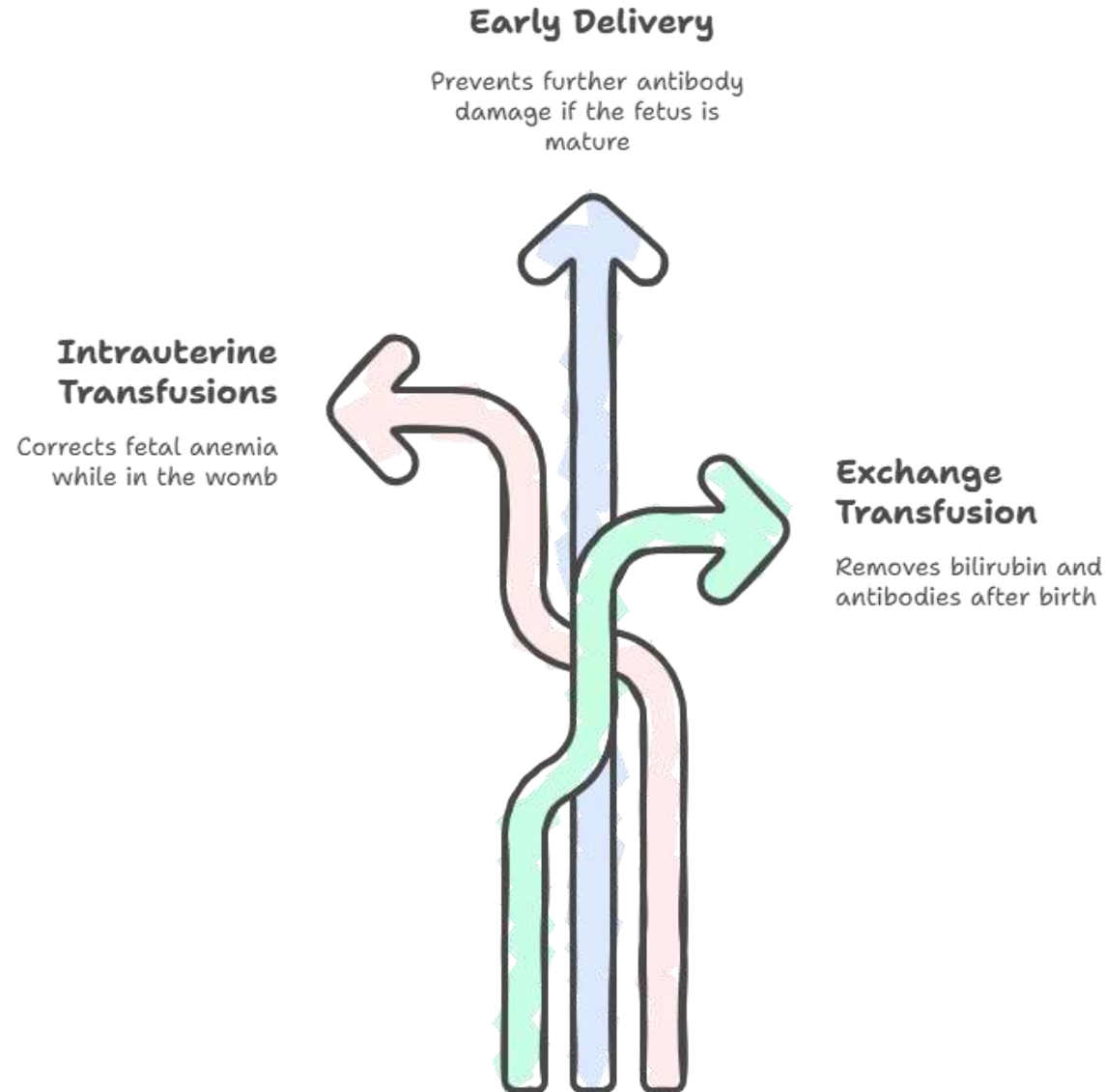
Made with  Napkin

## How to ensure safe blood transfusions based on Rh factor?

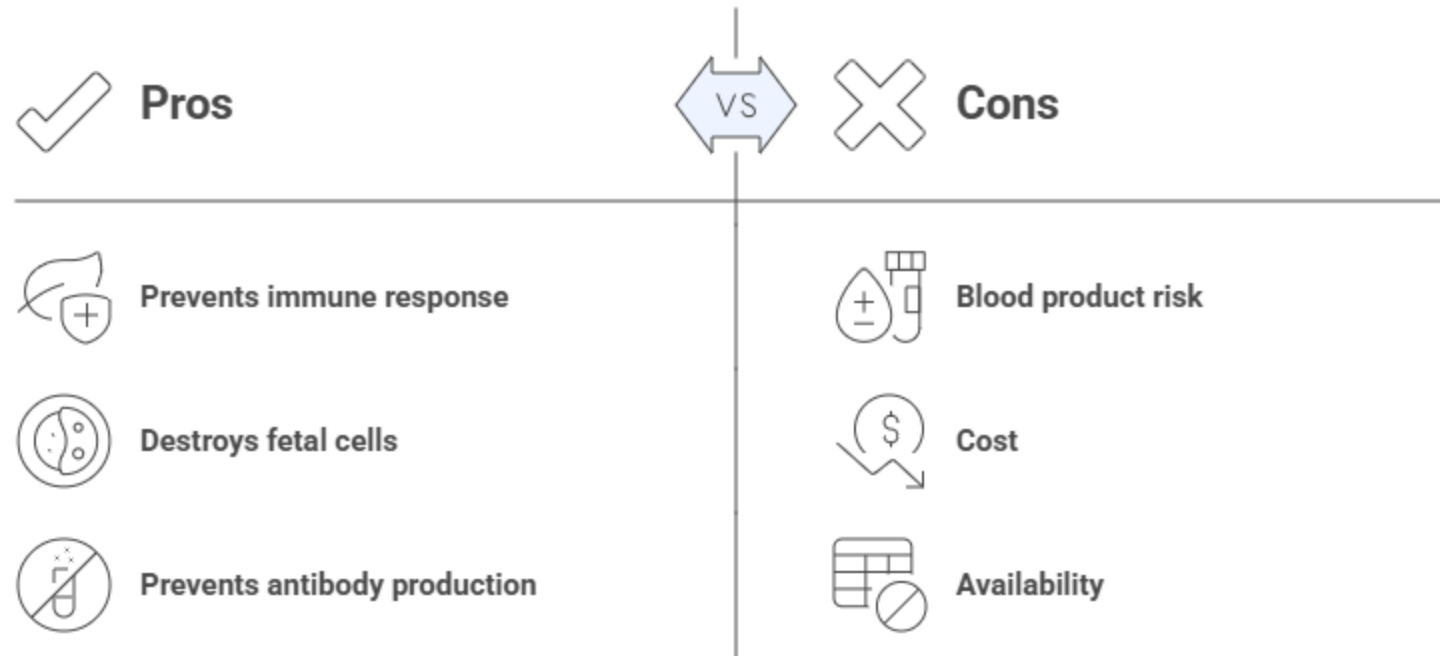


Made with  Napkin

# How to manage Rh incompatibility in pregnancy?

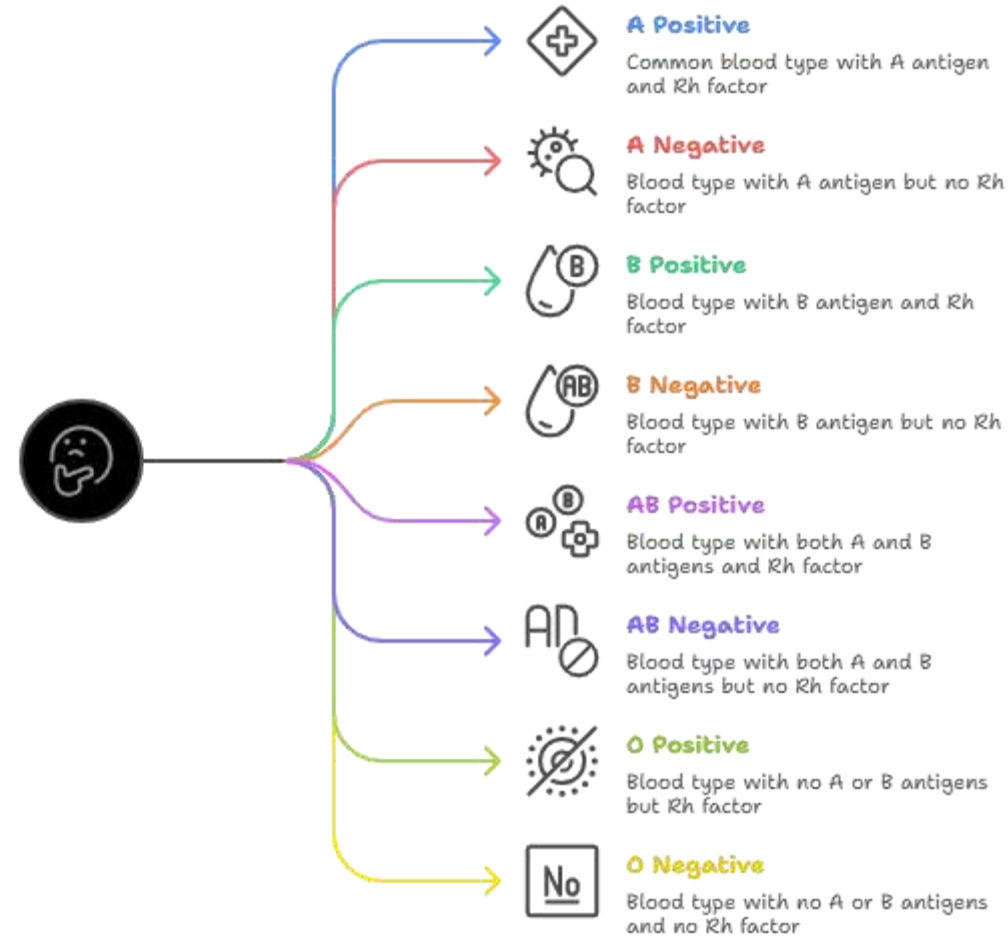


## Rhlg Treatment



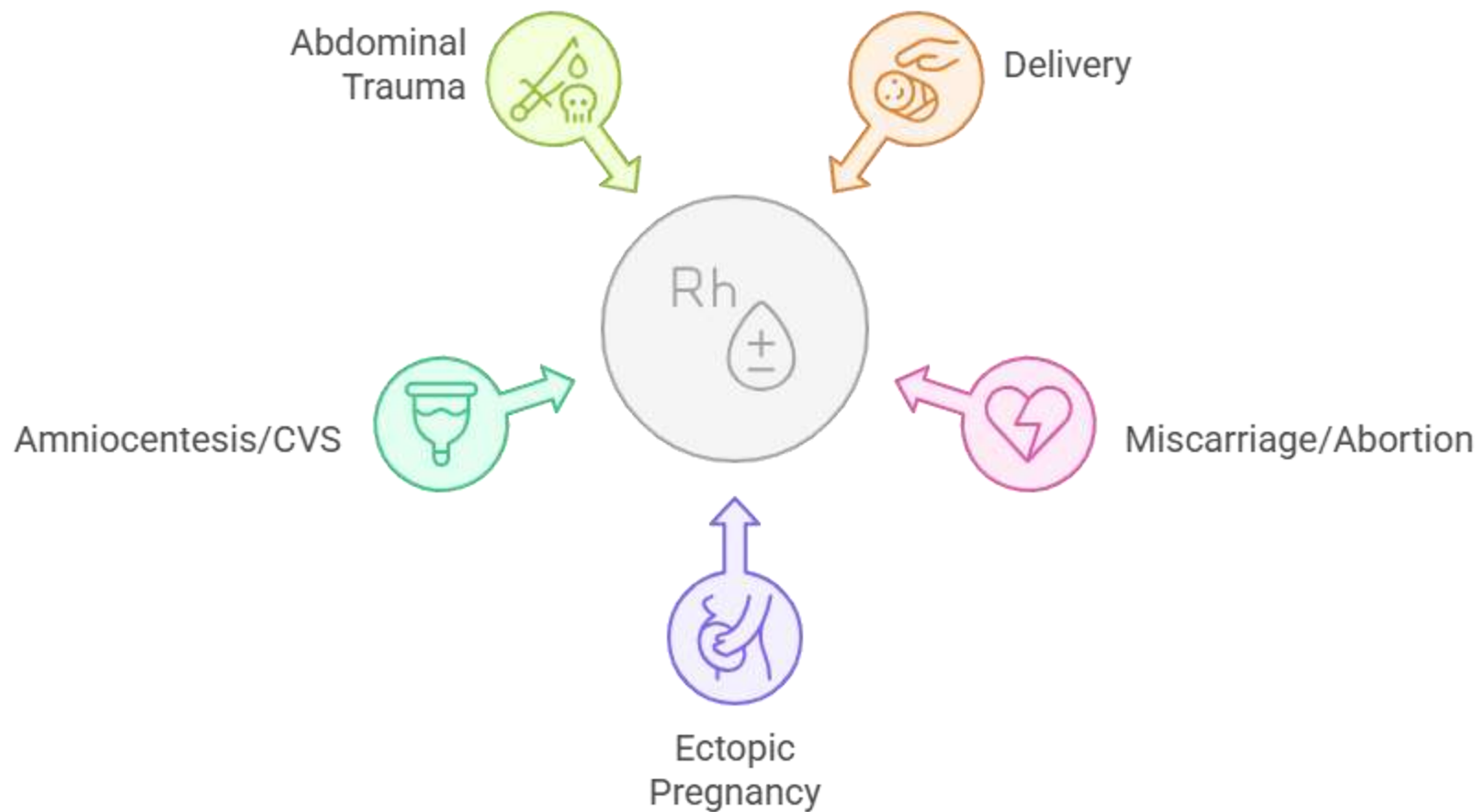
Made with  Napkin

## What is the patient's blood type?



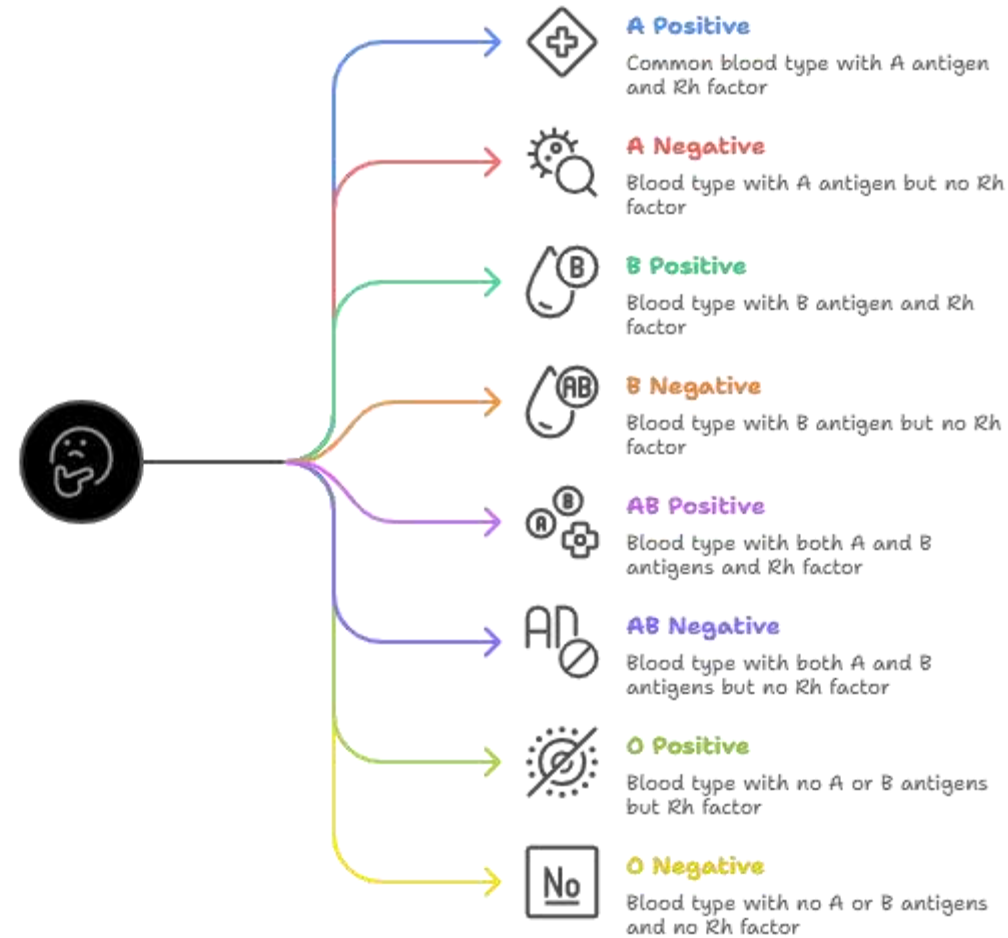


## Causes of Rh Incompatibility

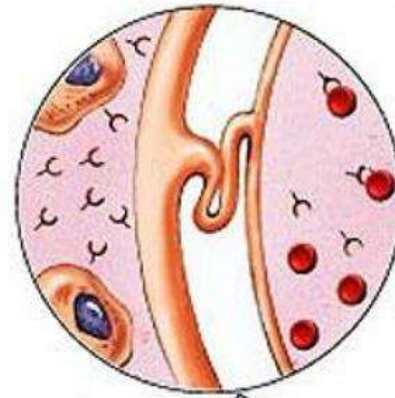


Made with  Napkin

## What is the patient's blood type?



# Rh Factor and Pregnancy



Rh<sup>+</sup> mother w/Rh<sup>-</sup> baby— no problem  
 Rh<sup>-</sup> mother w/Rh<sup>+</sup> baby— problem  
 Rh<sup>-</sup> mother w/Rh<sup>-</sup> father— no problem  
 Rh<sup>-</sup> mother w/Rh<sup>-</sup> baby-- no problem

RhoGAM used @ 28 weeks



# Rh FACTOR

Rh POSITIVE				
Rh NEGATIVE				

 Rh ANTIGEN

 A ANTIGEN

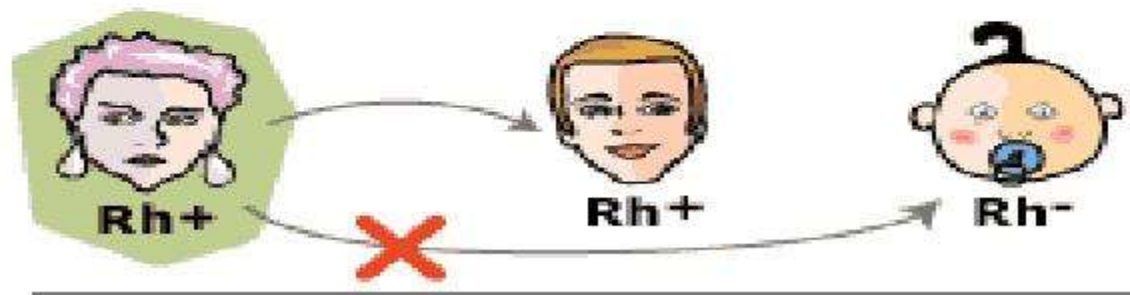
 B ANTIGEN

## RH FACTOR

- A person with Rh- blood can *develop* Rh antibodies in the blood plasma if he or she receives blood from a person with Rh+ blood, whose Rh antigens can trigger the production of Rh antibodies.



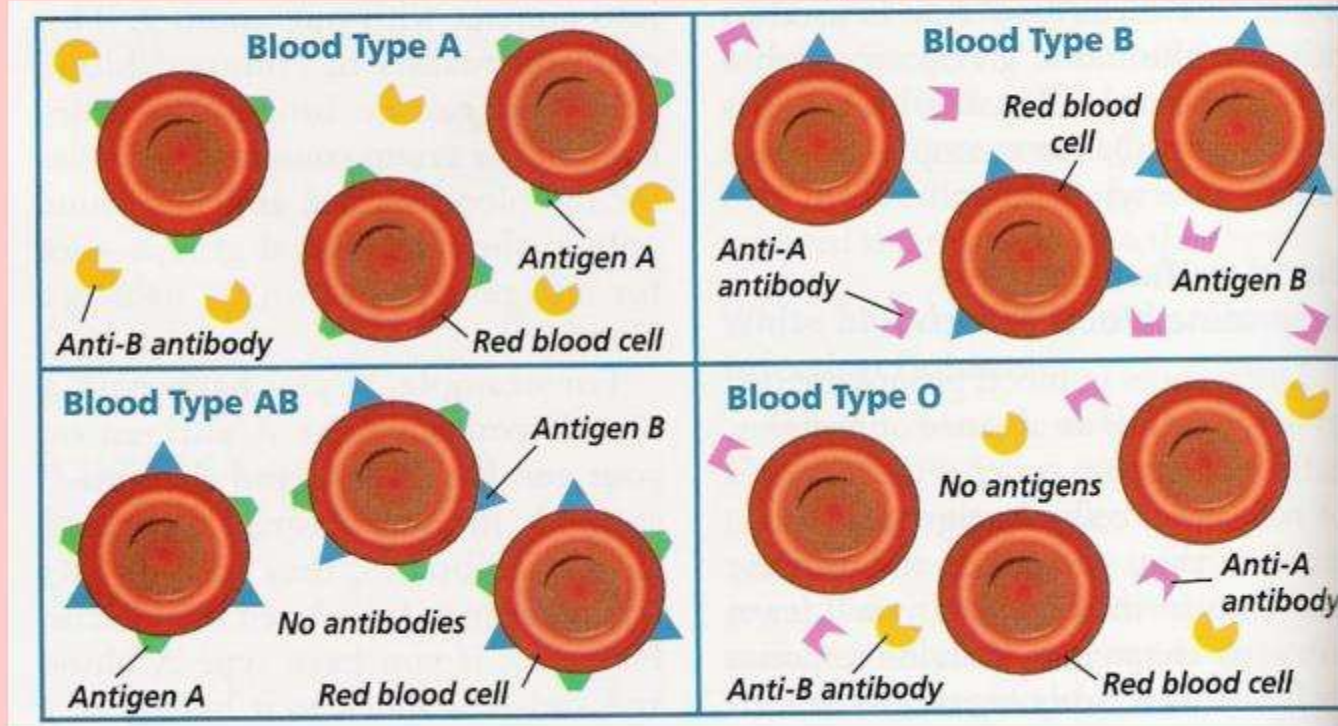
- A person with Rh+ blood can receive blood from a person with Rh- blood without any problems.






## ABO AND RH SYSTEM

### Laboratory Examination – ABO and Rh system



## Factor Rh

Blood Type (genotype)	Rh (+)	Rh (-)
Red Blood Cell Surface Proteins (phenotype)	 <p>Rh AGLUTINOGENO</p>	 <p>NO AGLUTINOGENO</p>

# CLASS ASSESSMENTS



IDENTIFY THE BLOOD GROUP?

Without  
antibodies



With  
Anti-A



With  
Anti-B



With  
Anti-A and Anti-B





# CLASS ASSESSMENTS



IDENTIFY THE BLOOD GROUP?

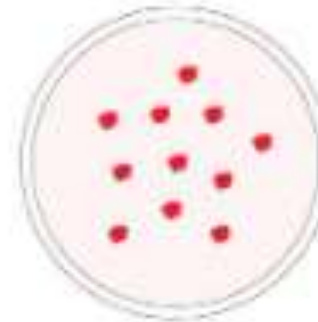
Without  
antibodies



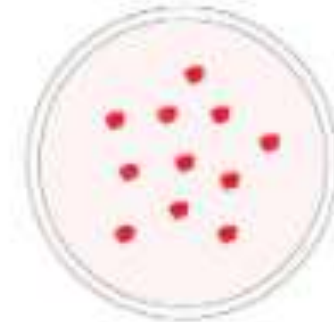
With  
Anti-A



With  
Anti-B



With  
Anti-A and Anti-B



# CLASS ASSESSMENTS

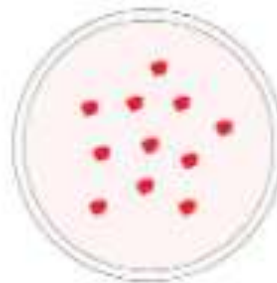


IDENTIFY THE BLOOD GROUP?

Without  
antibodies



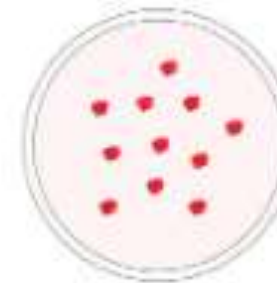
With  
Anti-A



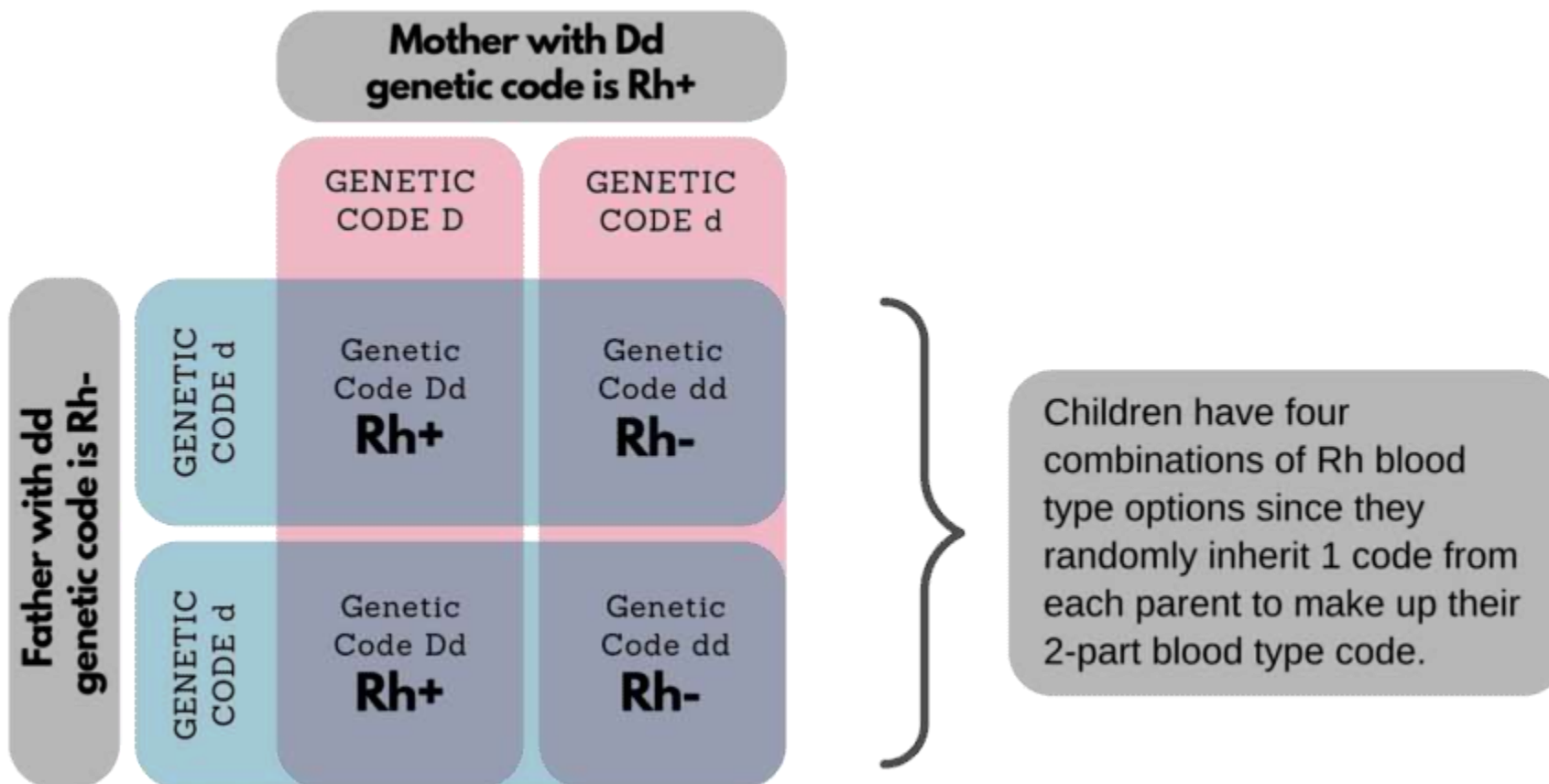
With  
Anti-B



With  
Anti-A and Anti-B



# SUMMARY



## REFERENCE

- ✓ Essentials of Medical Physiology, K. Sembulingam & P. Sembulingam (Jaypee Brothers Medical Publishers)
- ✓ A Textbook of Human Anatomy and Physiology-I, SIA Publishers
- ✓ Human Anatomy & Physiology Gerard J. Tortora & Bryan H. Derrickson (Wiley)
- ✓ Ross and wilson anatomy and physiology in health and illness, Anne Waugh & Allison Grant.

