

SNS COLLEGE OF PHARMACY AND HEALTH SCIENCES

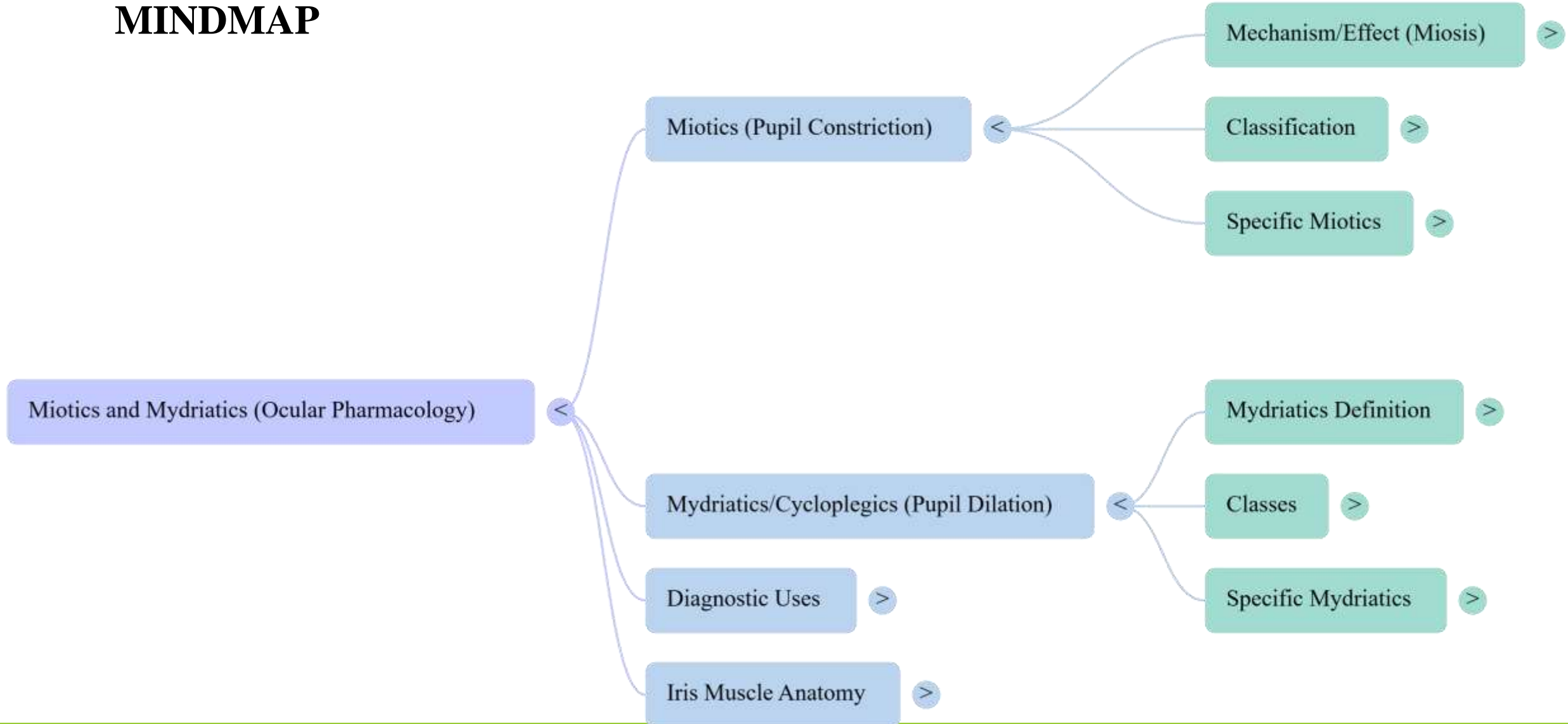
Affiliated To The Tamil Nadu Dr. MGR Medical University, Chennai
Approved by Pharmacy Council of India, New Delhi. Coimbatore -641035

COURSE NAME : PHARMACOLOGY(ER20-21 T)

YEAR : DPHARM-II YEAR

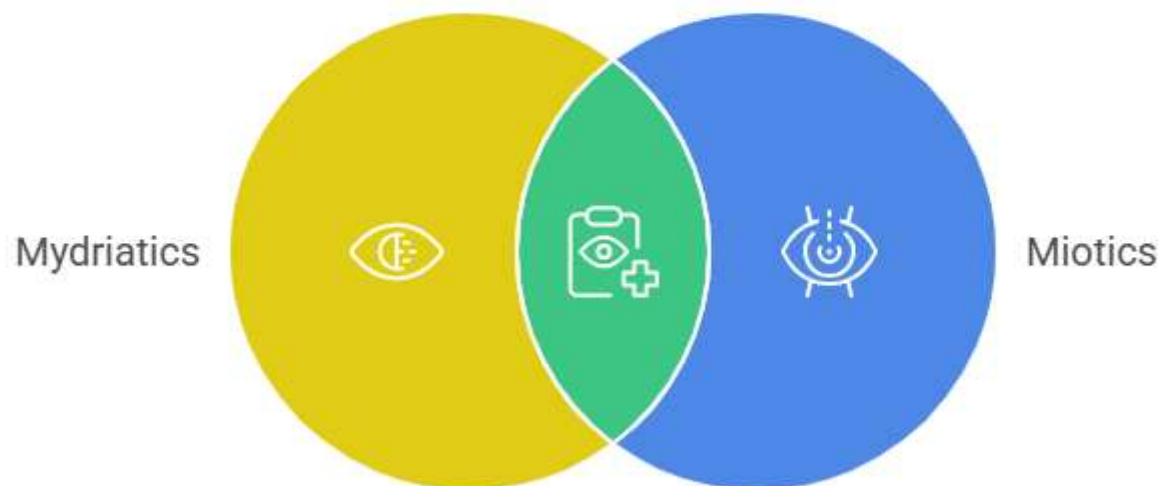
TOPIC : NEUROMUSCULAR BLOCKING AGENTS


MINDMAP



Navigating Pupil-Modifying Drugs in Glaucoma

Glaucoma Management
Considerations



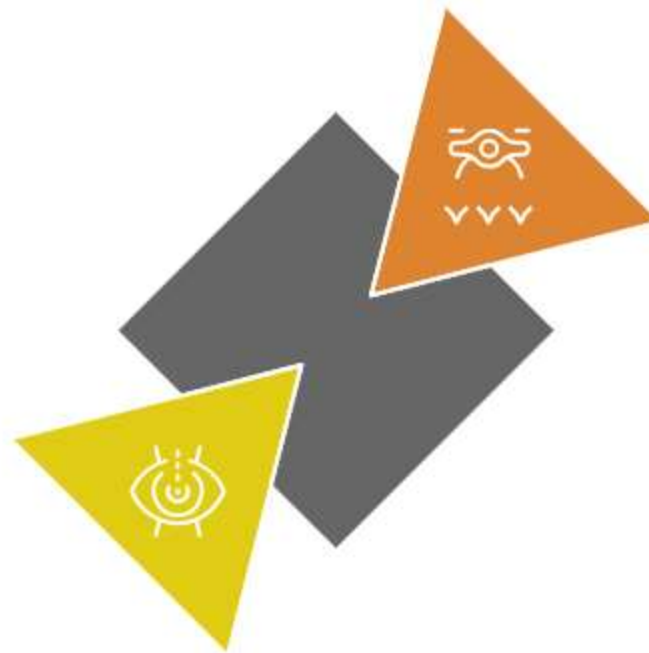
Made with  Napkin

Mydriatic Mechanisms



Made with  Napkin

Factors Exacerbating Angle-Closure Glaucoma



▶ **Pupillary Block**

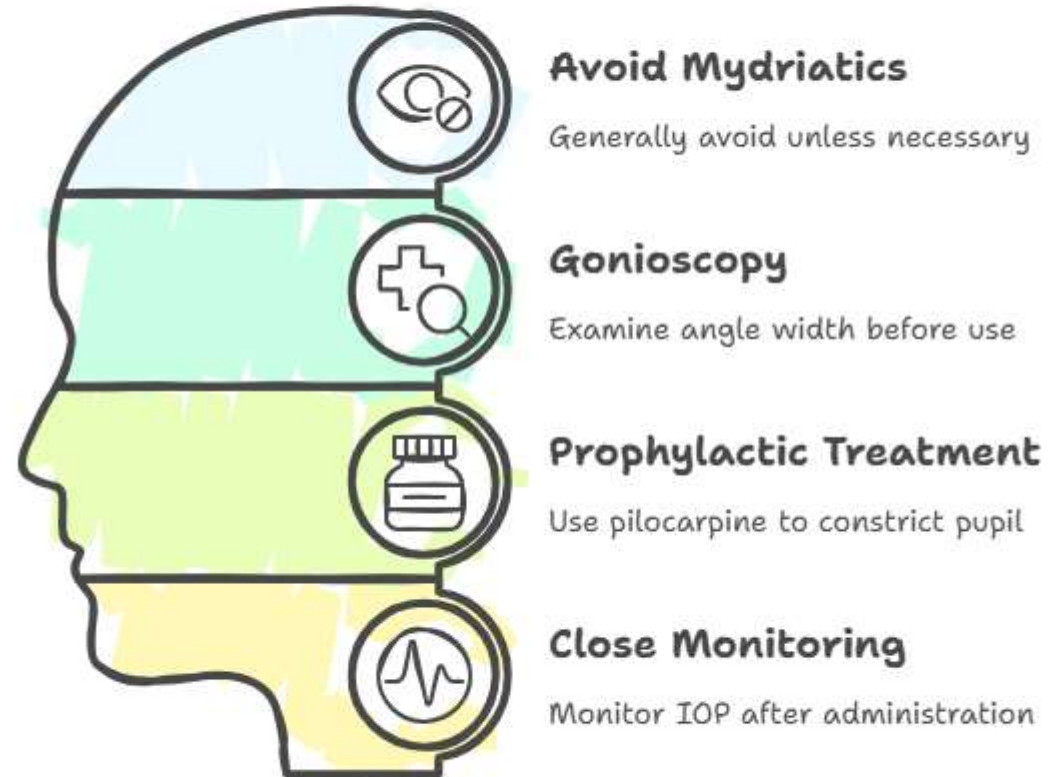
Dilation of the pupil causing iris bunching and meshwork obstruction

▶ **Shallow Anterior Chamber**

Cycloplegia leading to lens displacement and angle narrowing

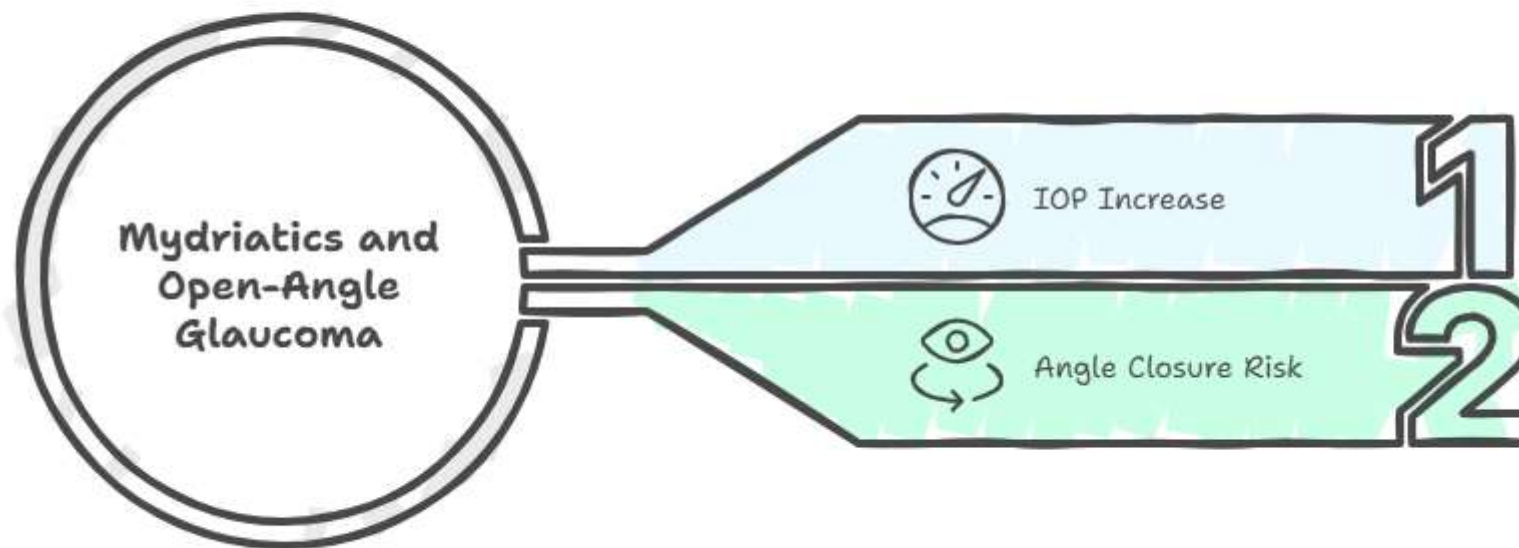
Made with  Napkin

Managing Mydriatics in Angle-Closure Glaucoma



Made with  Napkin

Exploring Mydriatic Effects on Open-Angle Glaucoma



Made with  Napkin

Should IOP be monitored after mydriatic use in open-angle glaucoma patients?

Monitor IOP

Prudent to monitor IOP, especially in patients with poorly controlled glaucoma, to ensure no significant increase.

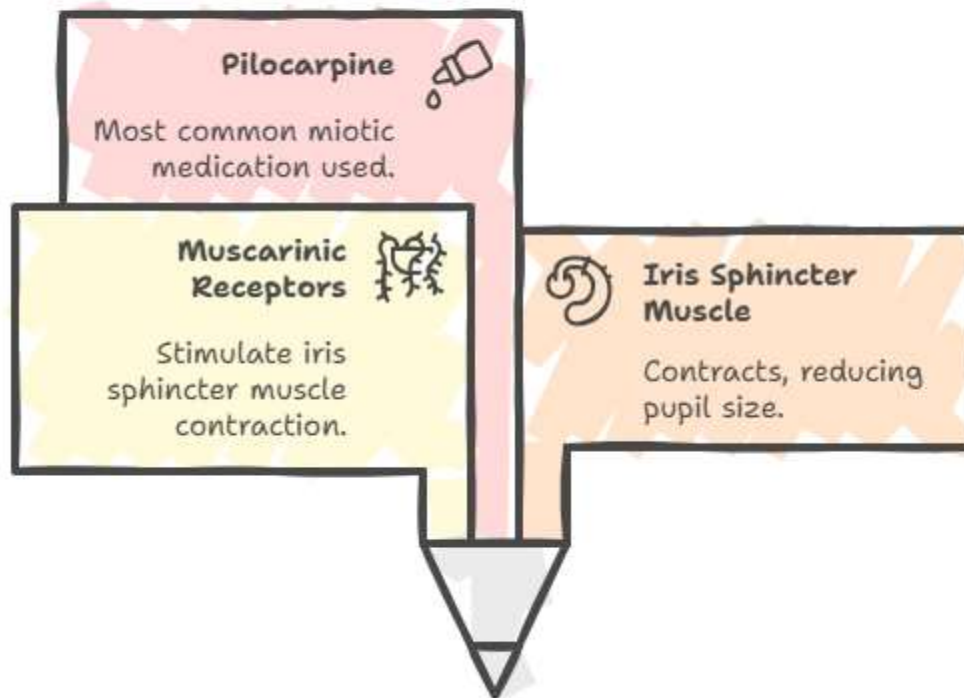
No Monitoring

Generally safe, but monitoring may be unnecessary for well-controlled glaucoma.



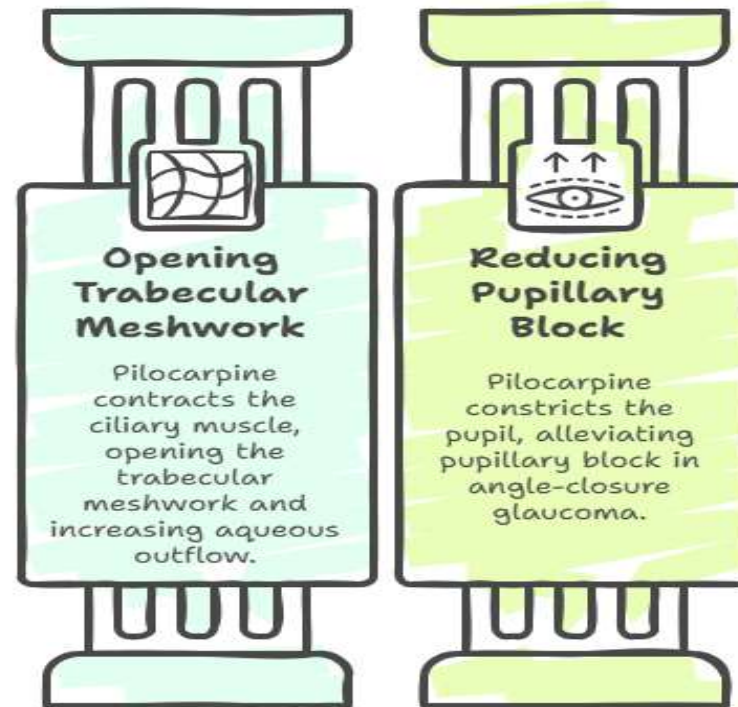
Made with  Napkin

Miotics and Pupil Control



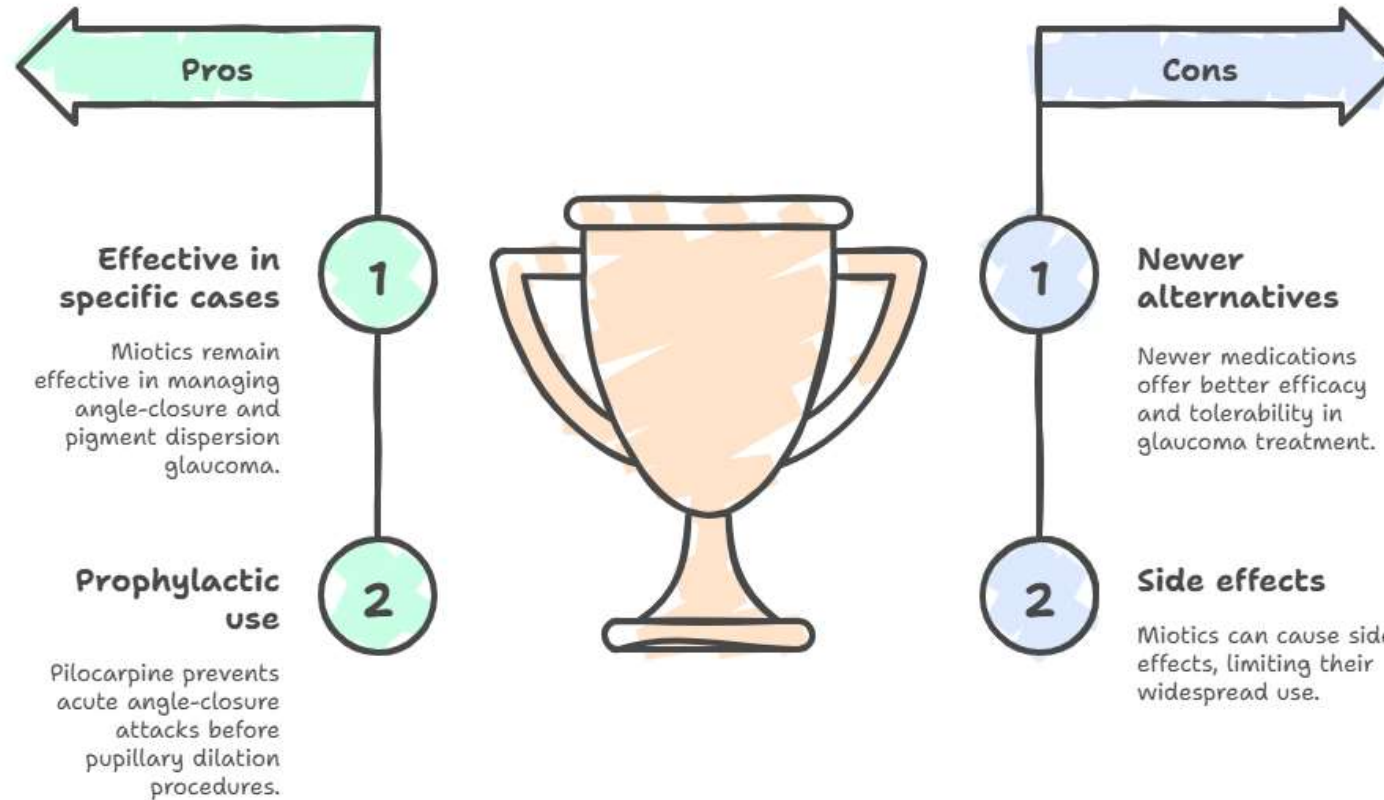
Made with  Napkin

Pilocarpine's Glaucoma Management



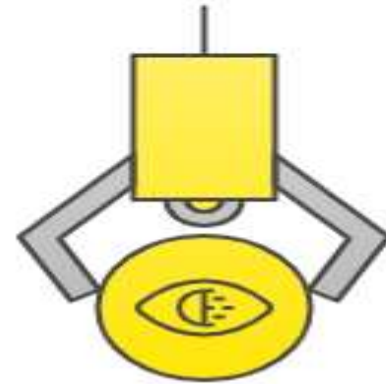
Made with  Napkin

Miotics in glaucoma treatment



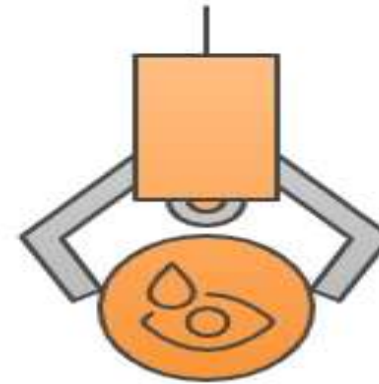
Made with  Napkin

Pilocarpine uses



Angle-Closure Glaucoma

Pilocarpine breaks acute attacks by constricting the pupil. It also prevents attacks in narrow angles.



Pigment Dispersion Glaucoma

Pilocarpine reduces pigment dispersion by constricting the pupil. This reduces iris chafing against the lens.

Made with  Napkin

Side Effects of Miotics

Retinal Detachment

Rare but serious eye condition



Miosis

Pupil constriction leading to dim vision



Accommodation Spasm

Blurred vision due to muscle spasm



Brow Ache

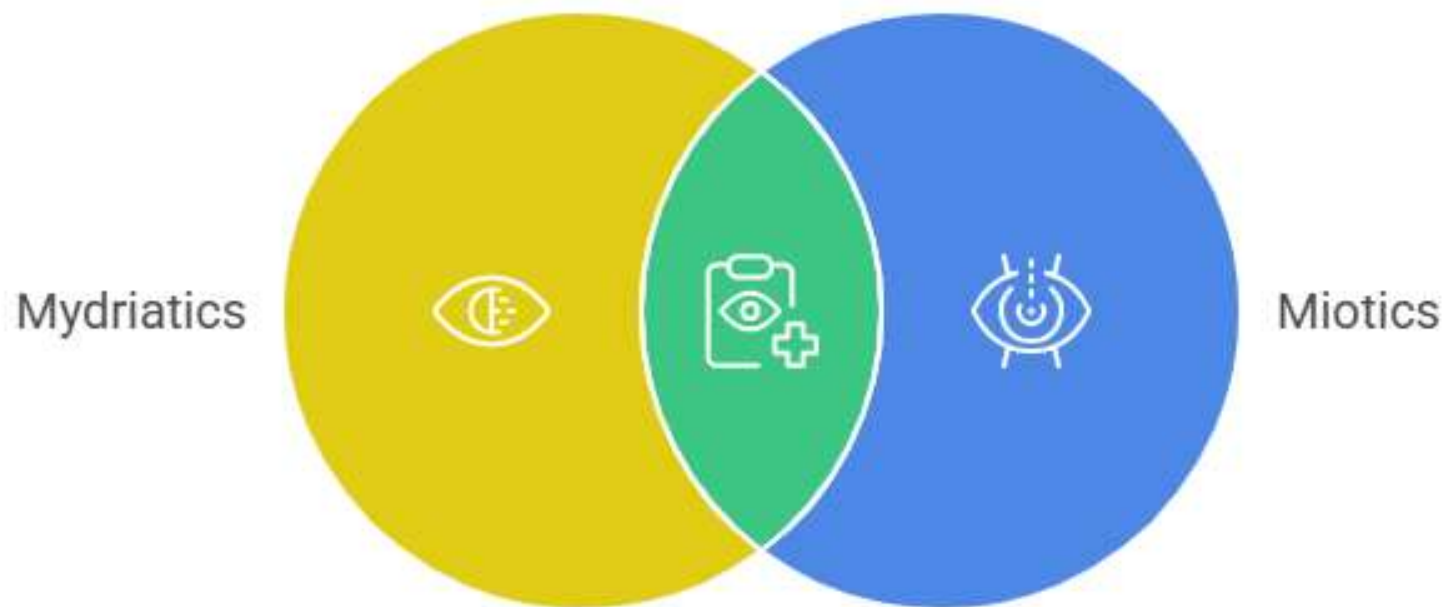
Contraction of ciliary muscle causing brow pain




Made with Napkin

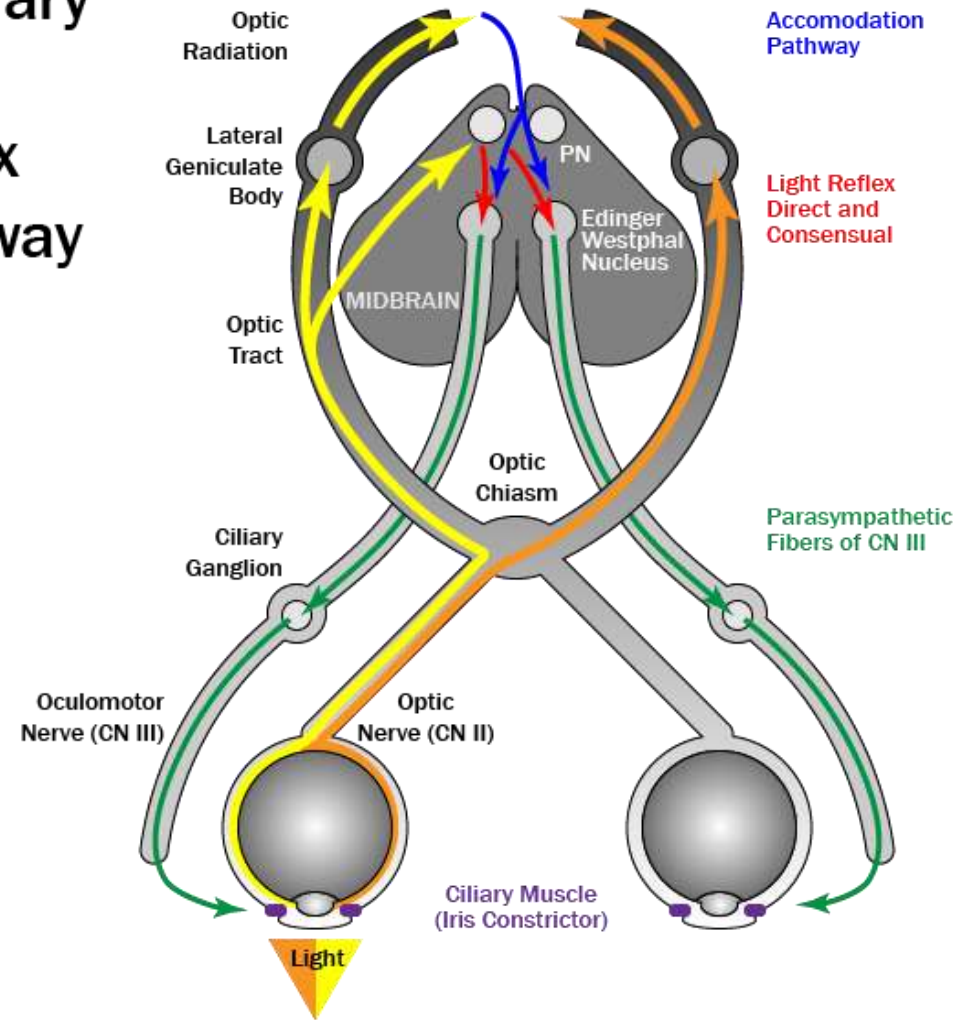
Navigating Pupil-Modifying Drugs in Glaucoma

Glaucoma Management Considerations



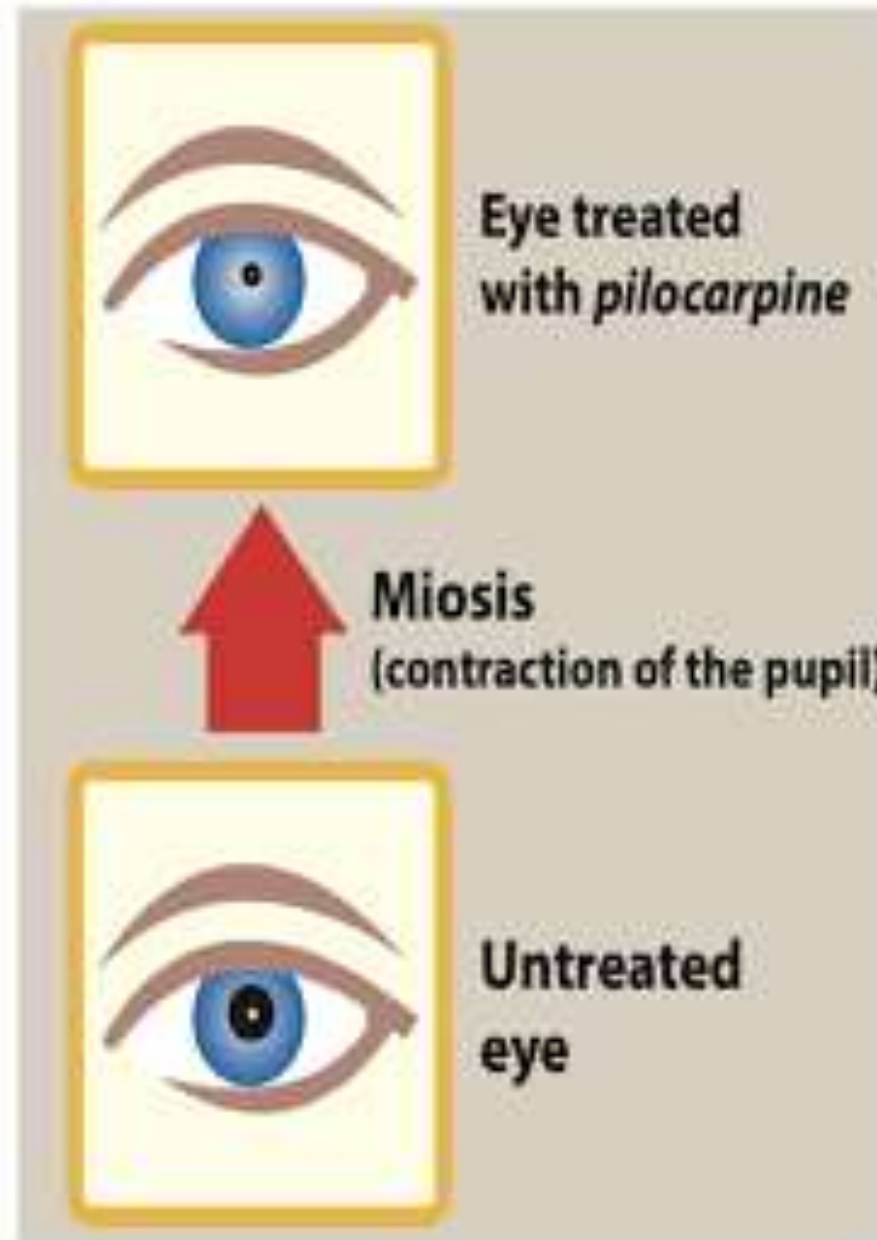
Made with  Napkin

Pupillary Light Reflex Pathway

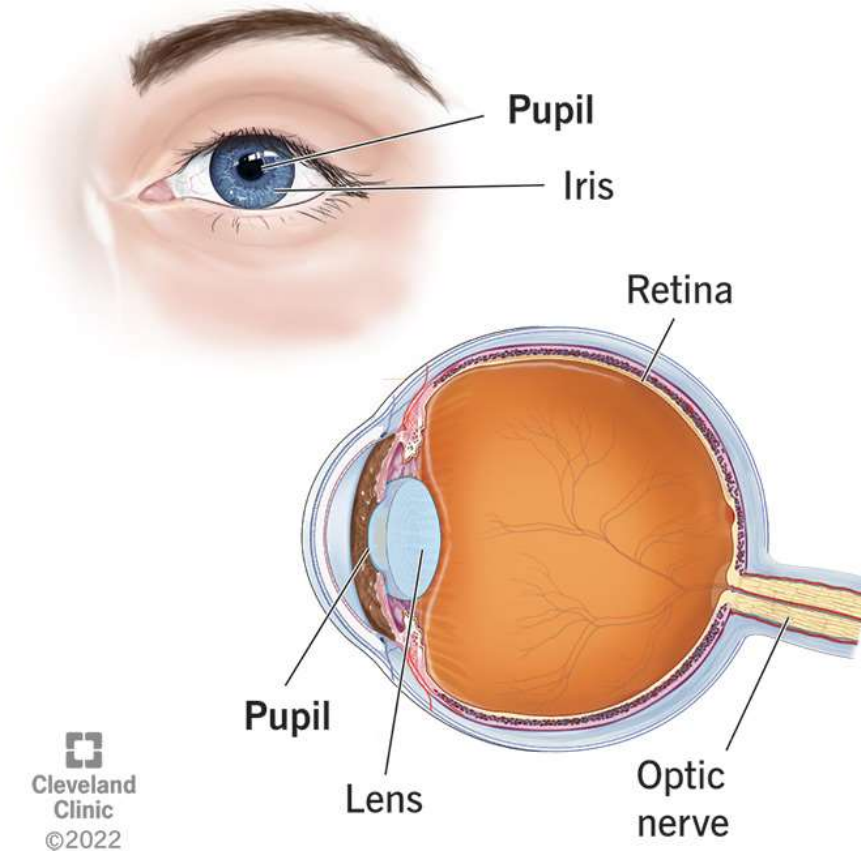


FPnotebook.com

MIOSIS DRUG



Pupil of the Eye




Cleveland
Clinic
©2022

CLASS ASSESSMENTS



WHETHER PUPIL SIZE INCREASE OR DECREASE IN MIOSIS?

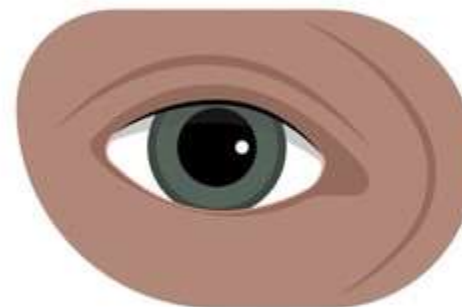
PUPILLARY LIGHT REFLEX



NORMAL LIGHT



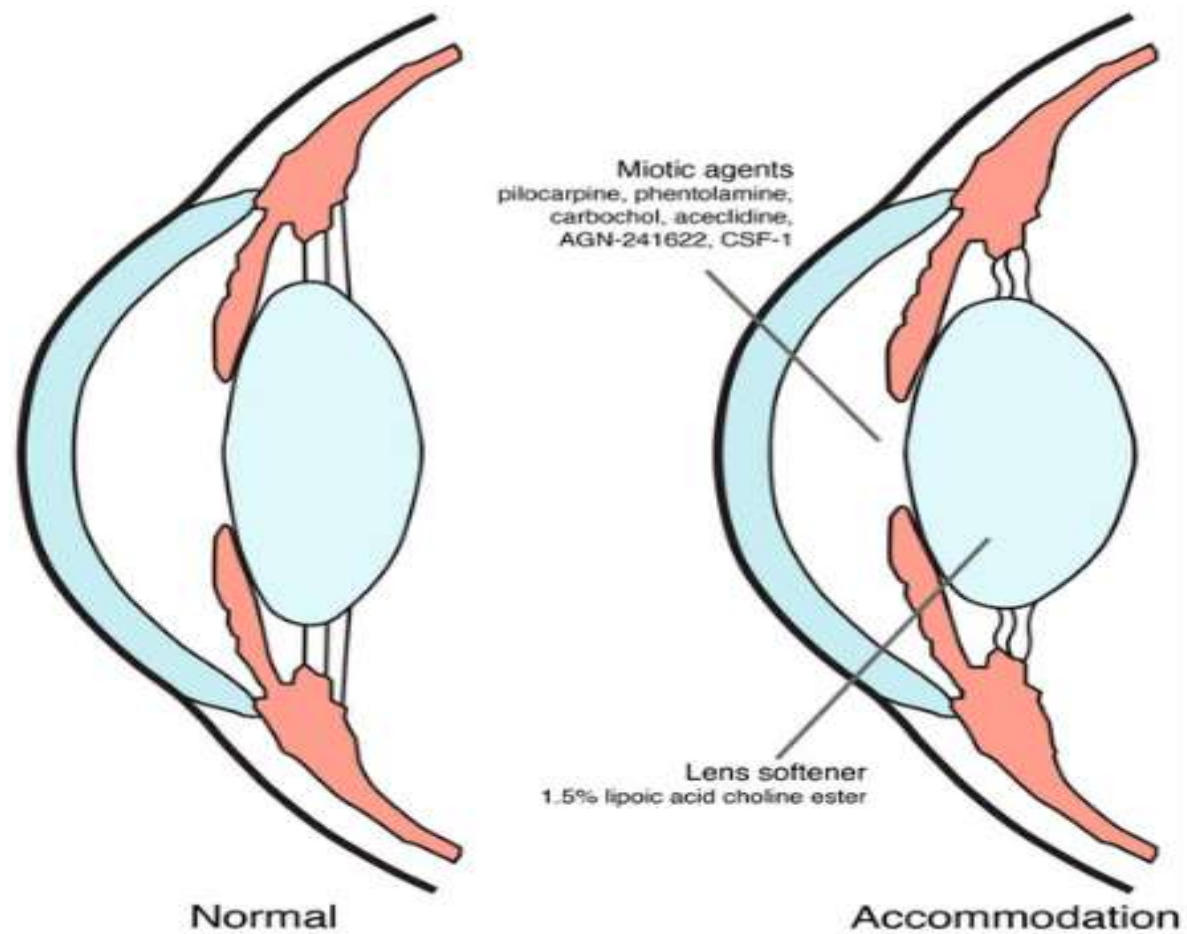
BRIGHT LIGHT



DIM LIGHT

shutterstock.com • 2130953933

SUMMARY



REFERENCE

- Rang & Dale's Pharmacology, 9th Edition, Elsevier, 2019.
- Goodman & Gilman's: The Pharmacological Basis of Therapeutics, 13th Edition, McGraw-Hill, 2018.
- Text book of Pharmacology by KD Tripathi.

