

SNS COLLEGE OF PHARMACY AND HEALTH SCIENCES



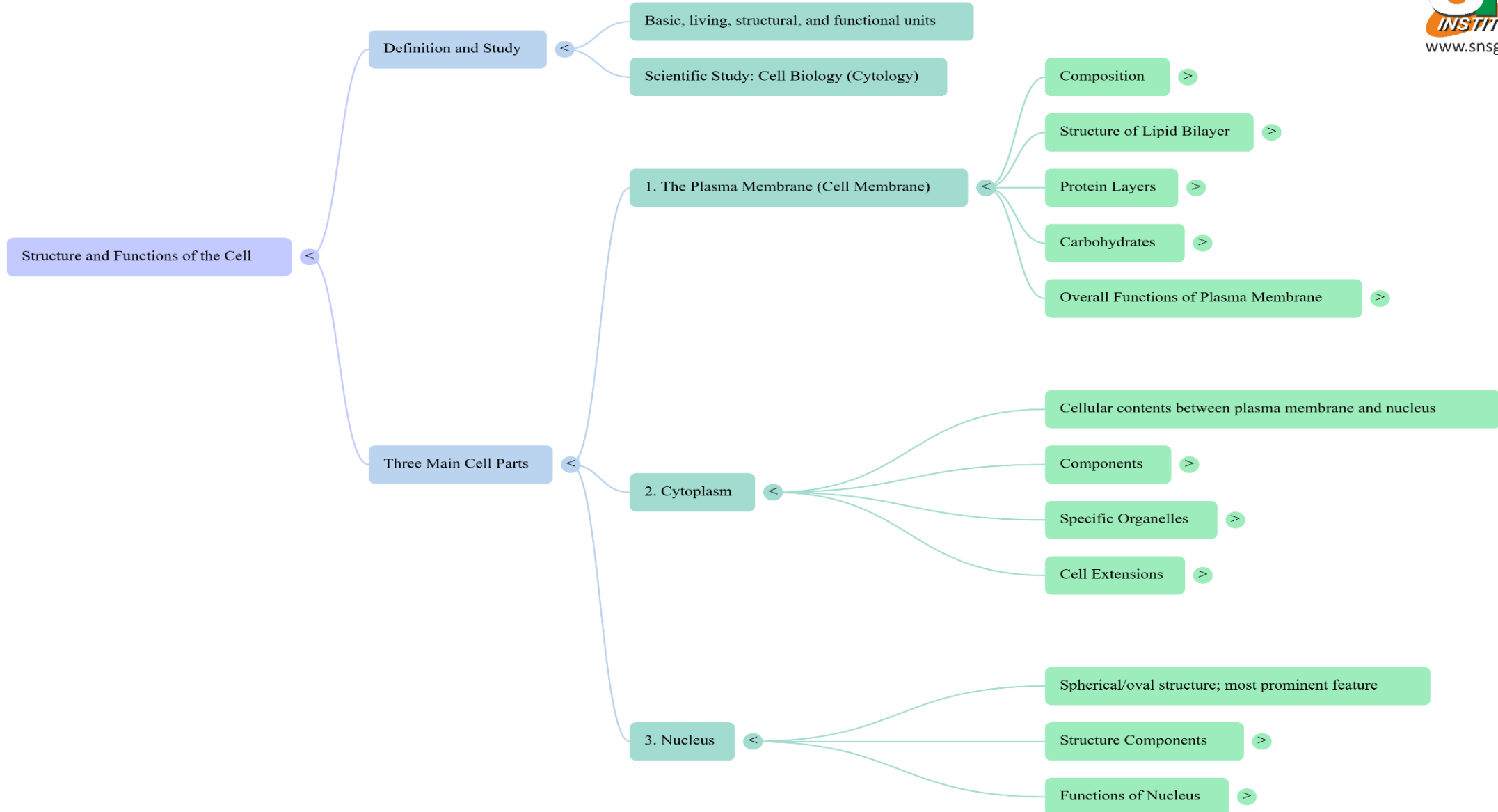
Affiliated To The Tamil Nadu Dr. MGR Medical University, Chennai
Approved by Pharmacy Council of India, New Delhi.
Coimbatore -641035

COURSE NAME : HUMAN ANATOMY AND PHYSIOLOGY

PHARM D IST YEAR

TOPIC : CELL AND ITS COMPONENTS -III

MINDMAP

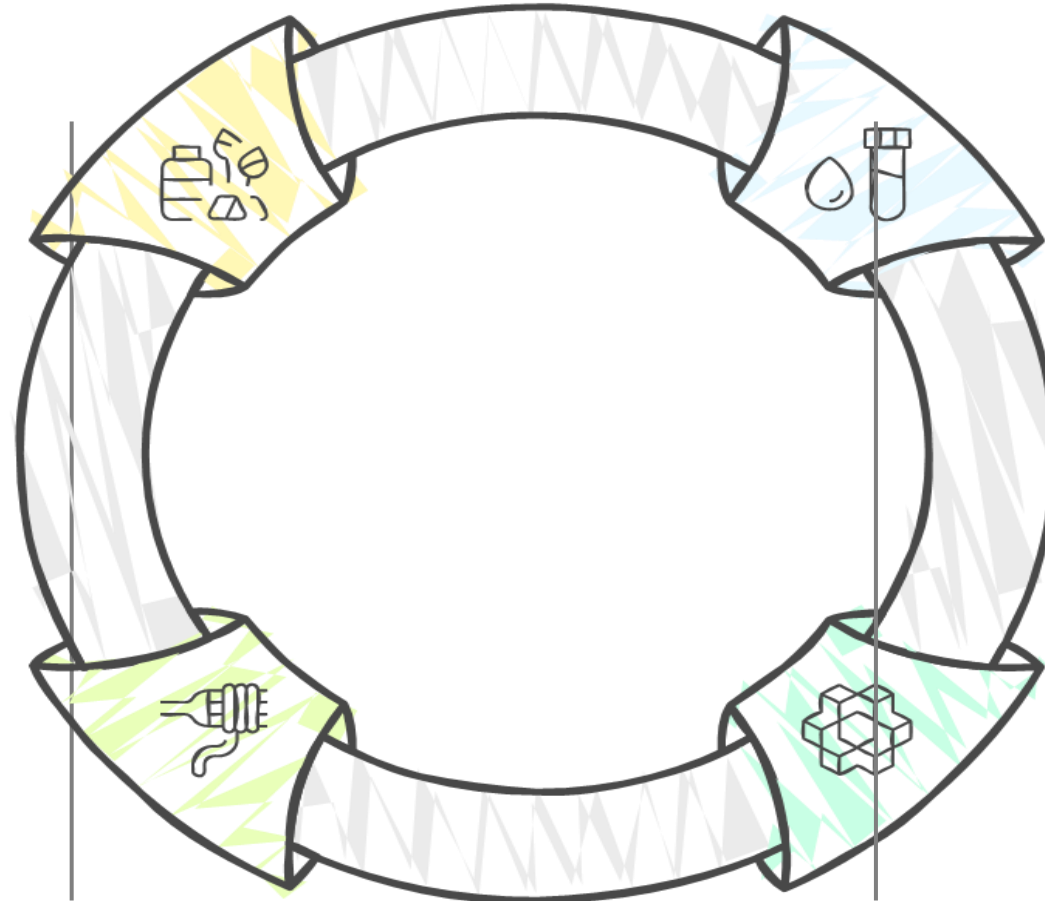


Inclusions

Stored materials
such as nutrients
and pigments

Cytoskeleton

A network of
fibers maintaining
cell shape and
aiding in
movement



Cytosol

The liquid portion
containing water,
salts, and organic
molecules

Organelles

Structures
performing specific
functions like energy
production and
protein synthesis

Cytoplasm Composition

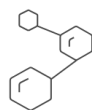
Cytoplasm Composition



Water

80%

Cytoplasm
composition



Other

20%

Ions, nutrients,
molecules

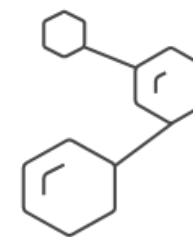
Cytoplasm Composition



Water

80%

Cytoplasm
composition

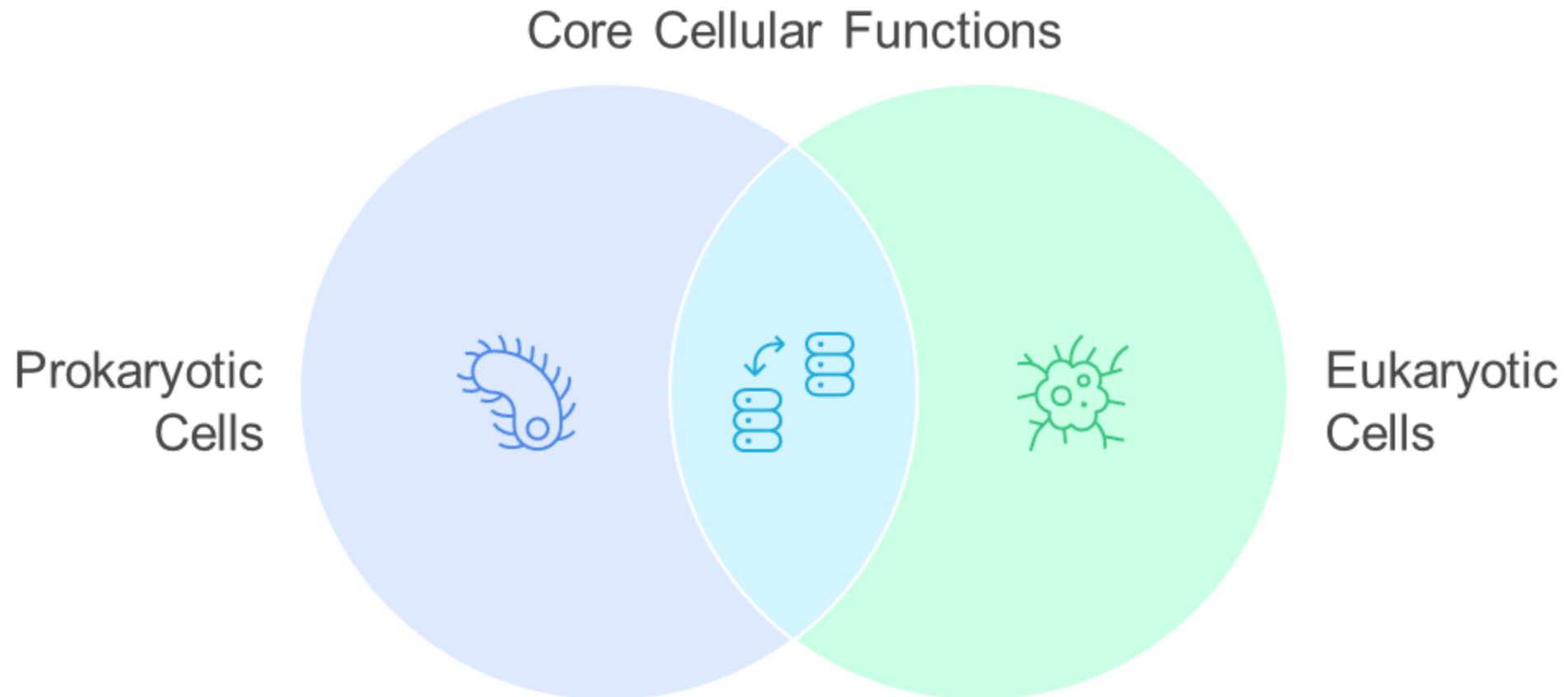


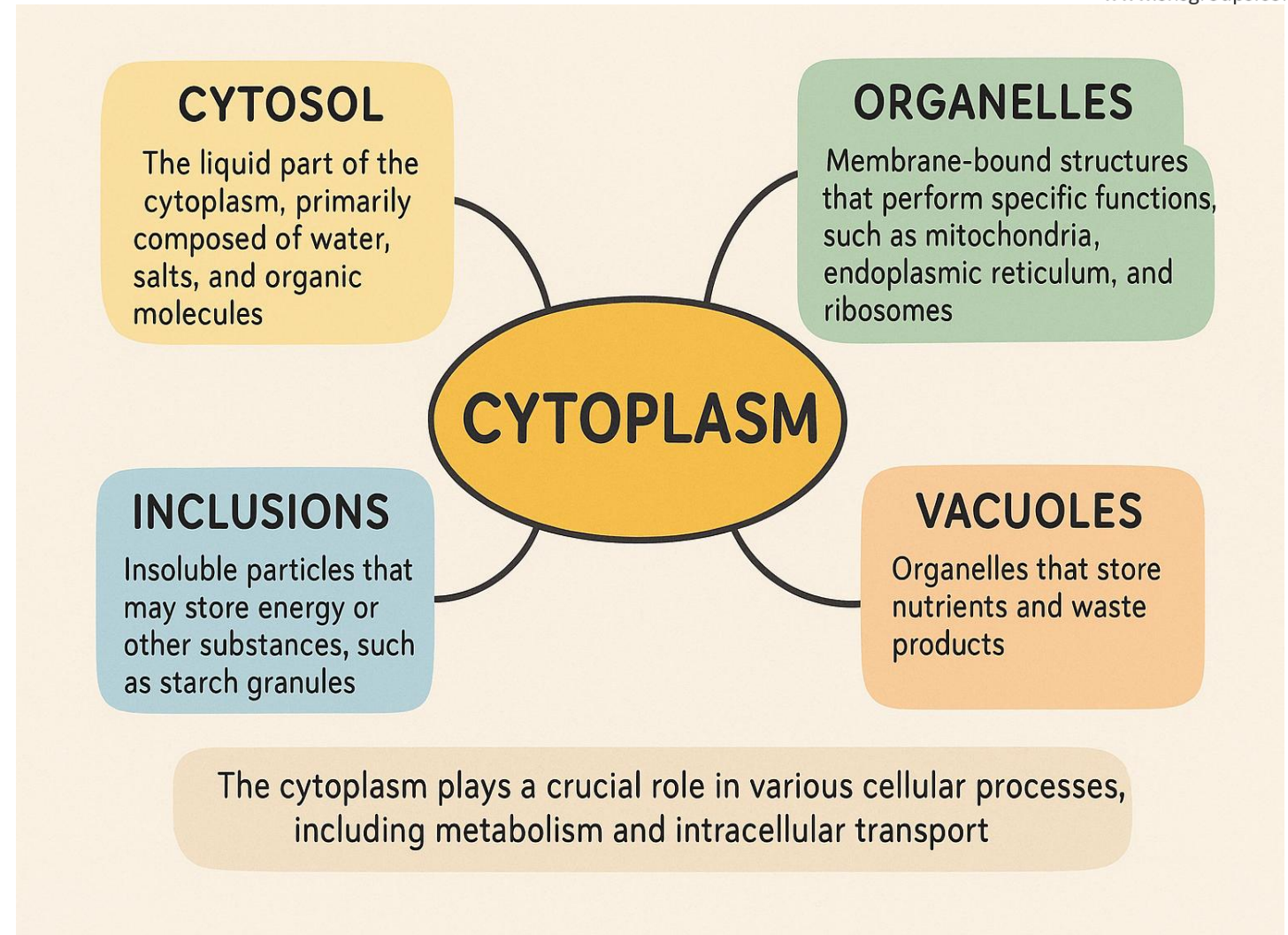
Other

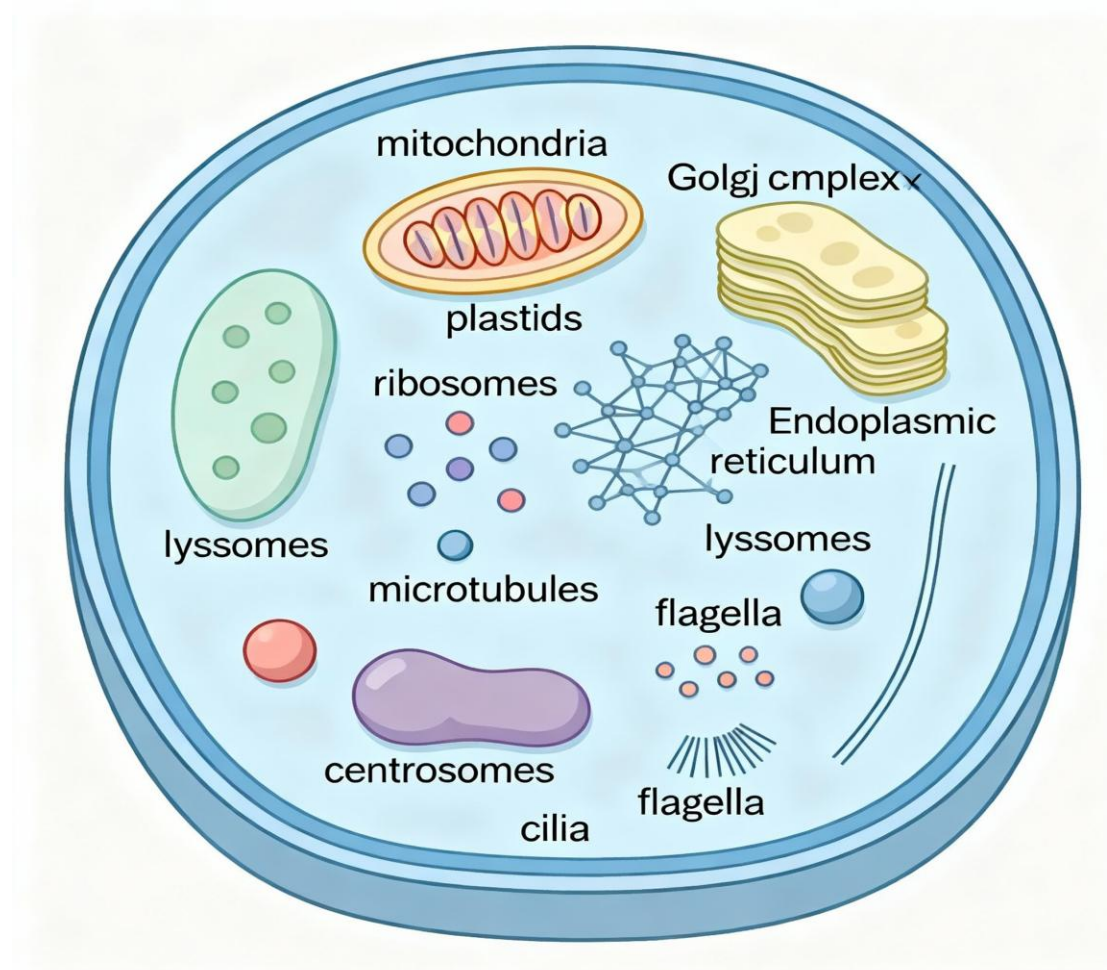
20%

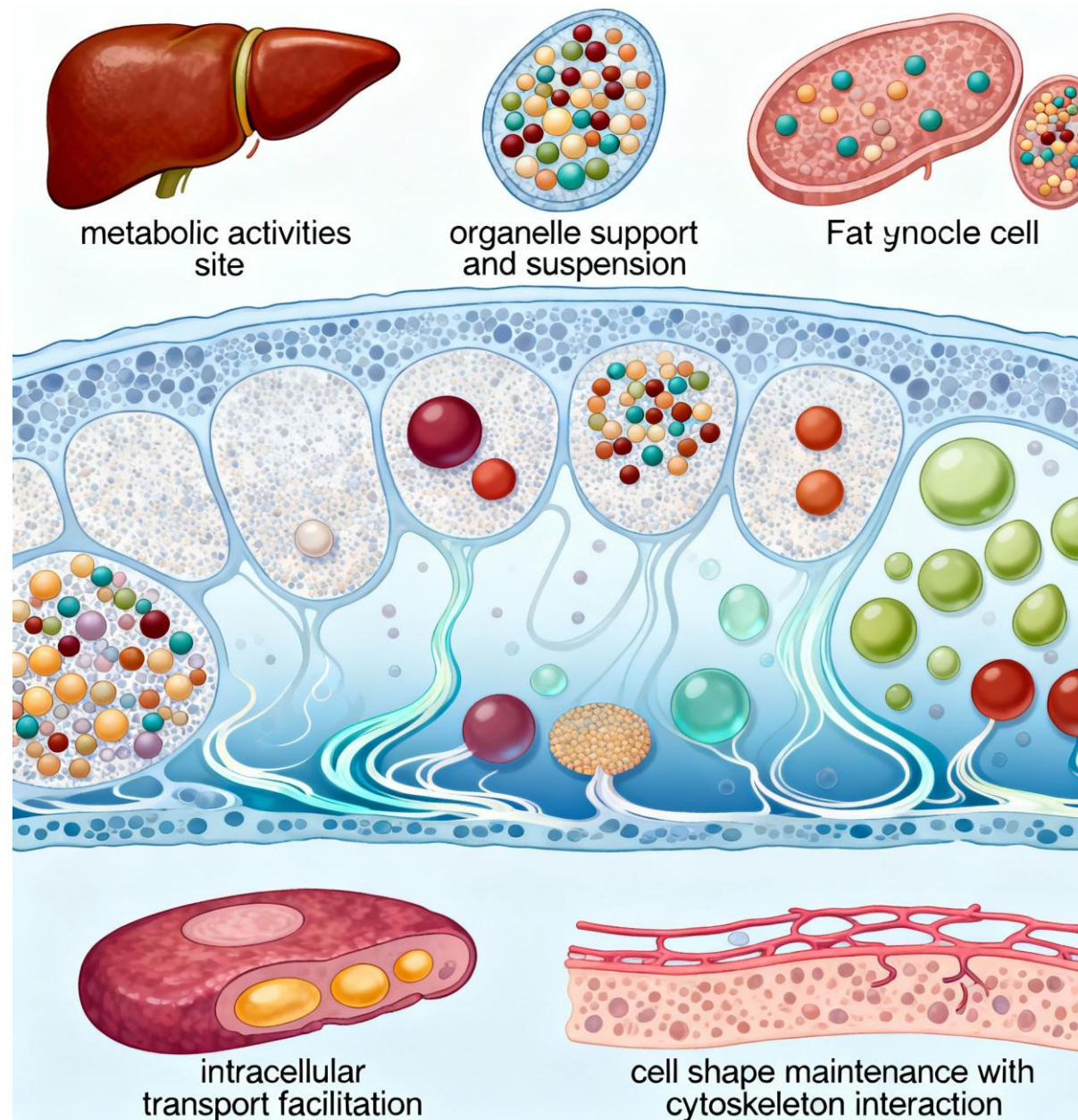
Ions, nutrients,
molecules

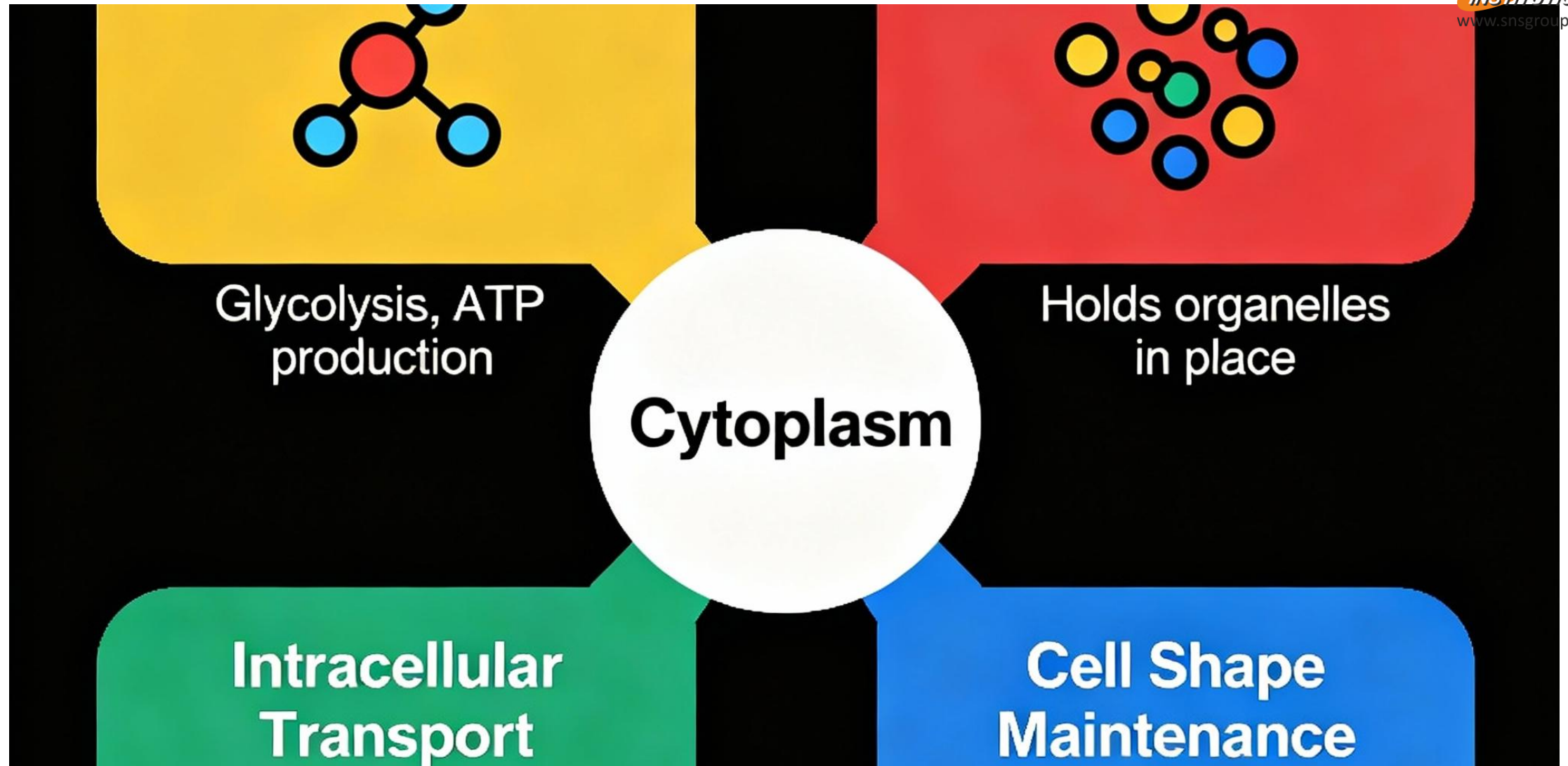
Shared Cellular Processes in Prokaryotes and Eukaryotes



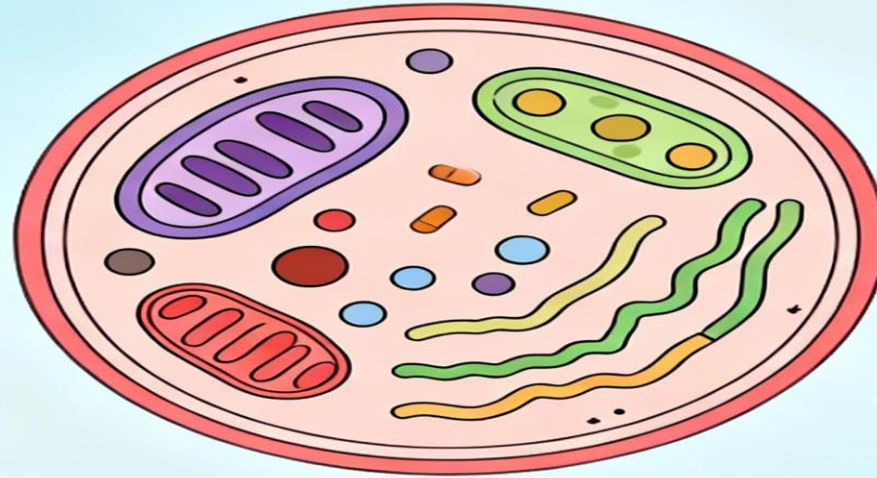








Cytoplasm Assessment Questions



Which organelle is NOT found in cytoplasm?

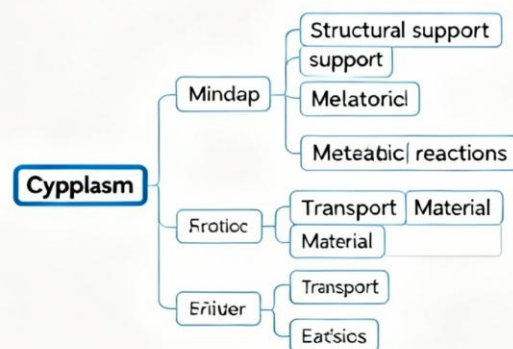
- A) Mitochondria
- B) Nucleus
- C) Ribosome
- D) Golgi apparatus

Describe the function of cytoplasm in a cell.

What are the primary functions of cytoplasm in a cell?



Cytoplasm Assessment Questions

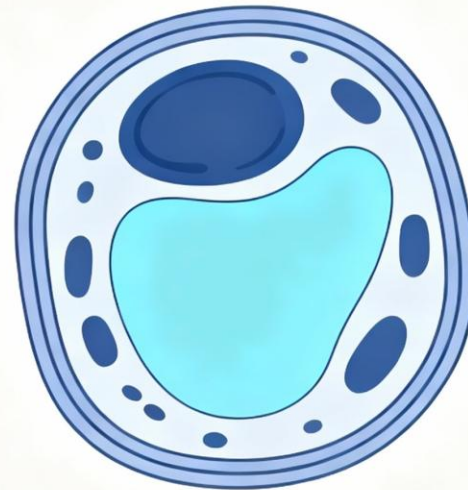


Questions:



Cytoplasm

How does the cytoplasm support cellular functions and why is it essential for life?



REFERENCES



- ✓ Ross And Wilson Anatomy And Physiology In Health And Illness, Anne Waugh & Allison Grant
- ✓ Essentials of Medical Physiology, K. Sembulingam & P. Sembulingam (Jaypee Brothers Medical Publishers)
- ✓ Human Anatomy & Physiology Gerard J. Tortora & Bryan H. Derrickson (Wiley)
- ✓ A Textbook of Human Anatomy and Physiology-I, SIA Publishers



Thank You

