

SNS COLLEGE OF PHARMACY AND HEALTH SCIENCES



Affiliated To The Tamil Nadu Dr. MGR Medical University, Chennai
Approved by Pharmacy Council of India, New Delhi.
Coimbatore -641035

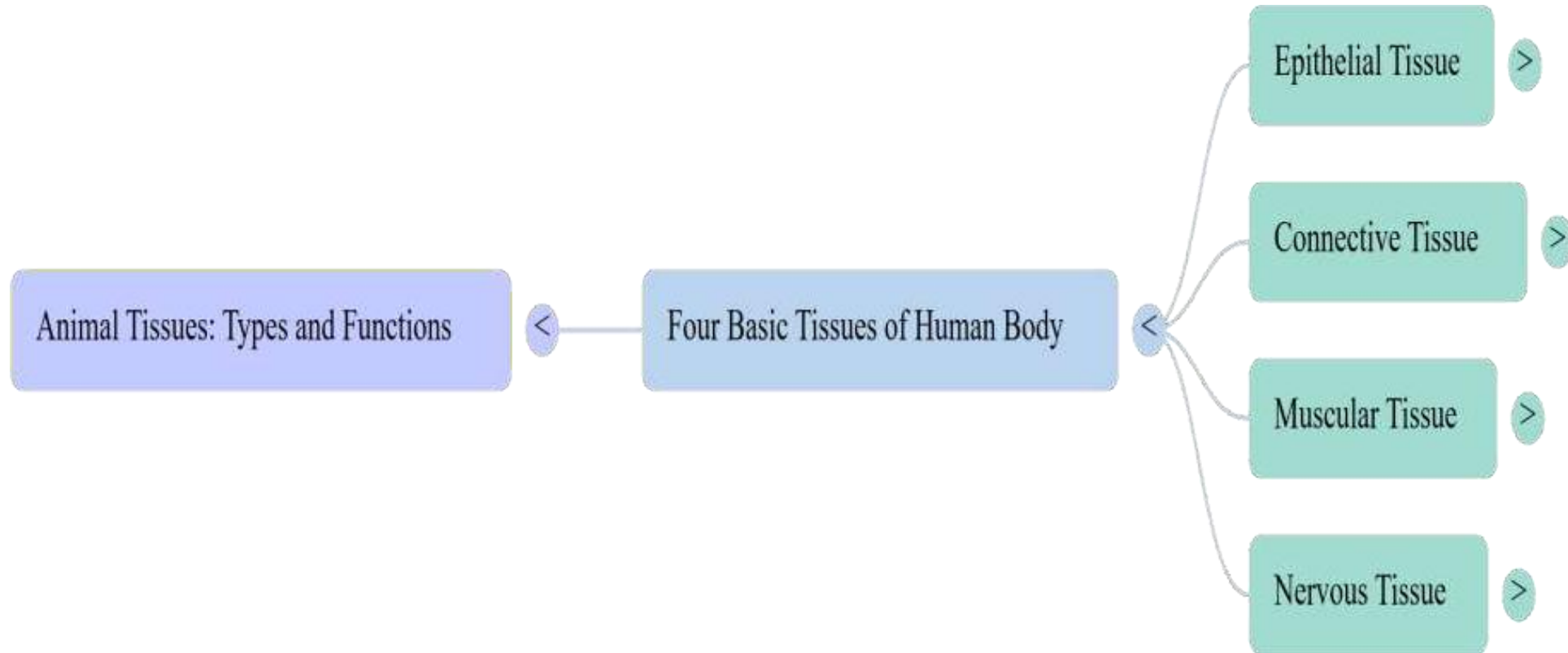
COURSE NAME : HUMAN ANATOMY AND PHYSIOLOGY

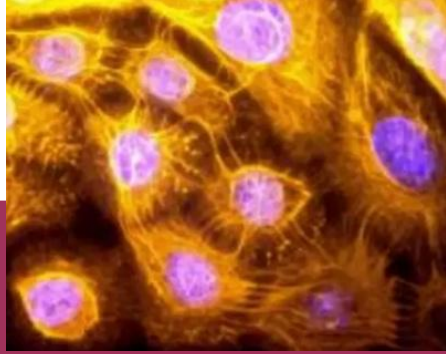
1ST YEAR PHARM D

TOPIC :THE ELEMENTARY TISSUES OF HUMAN BODY-I

THE TISSUES

MINDMAP





TISSUES

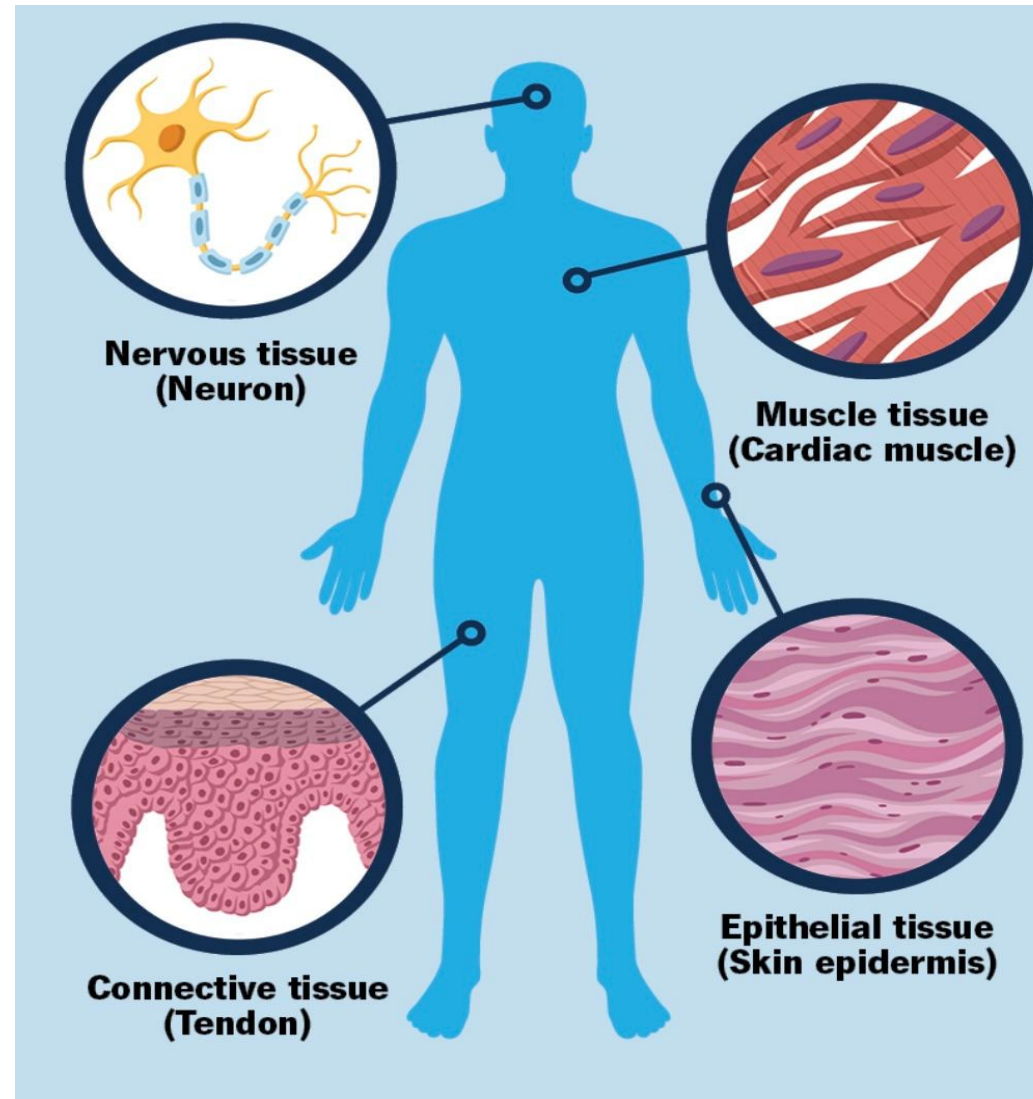


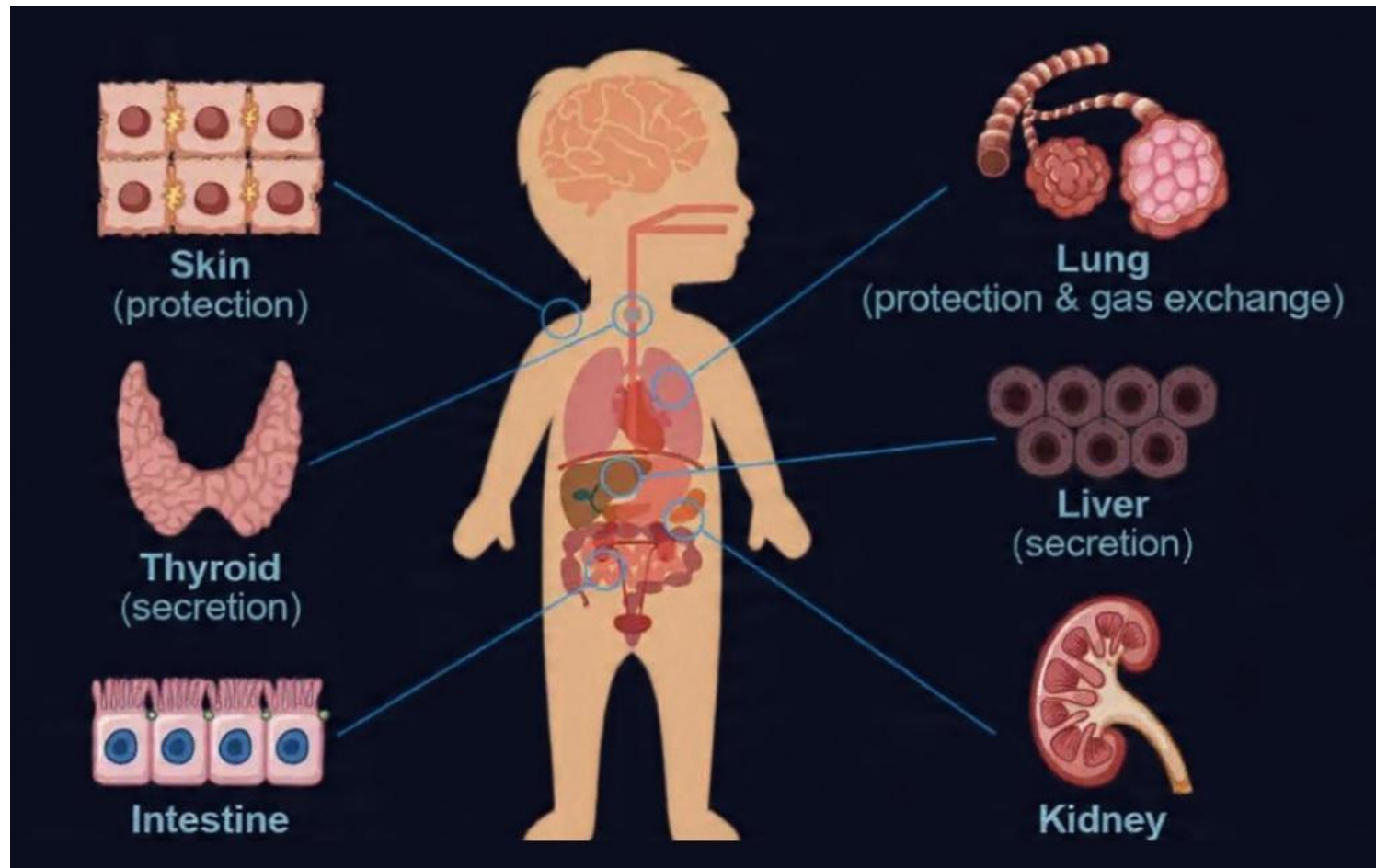
INTRODUCTION TO TISSUES

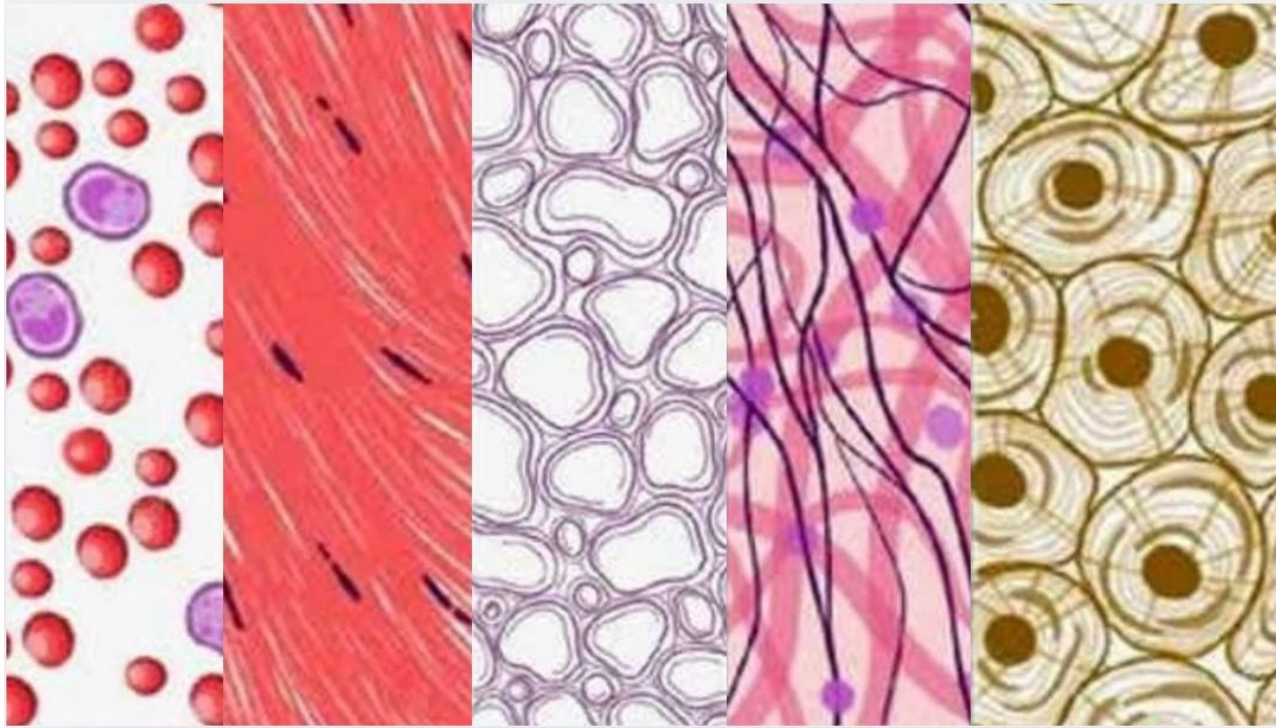


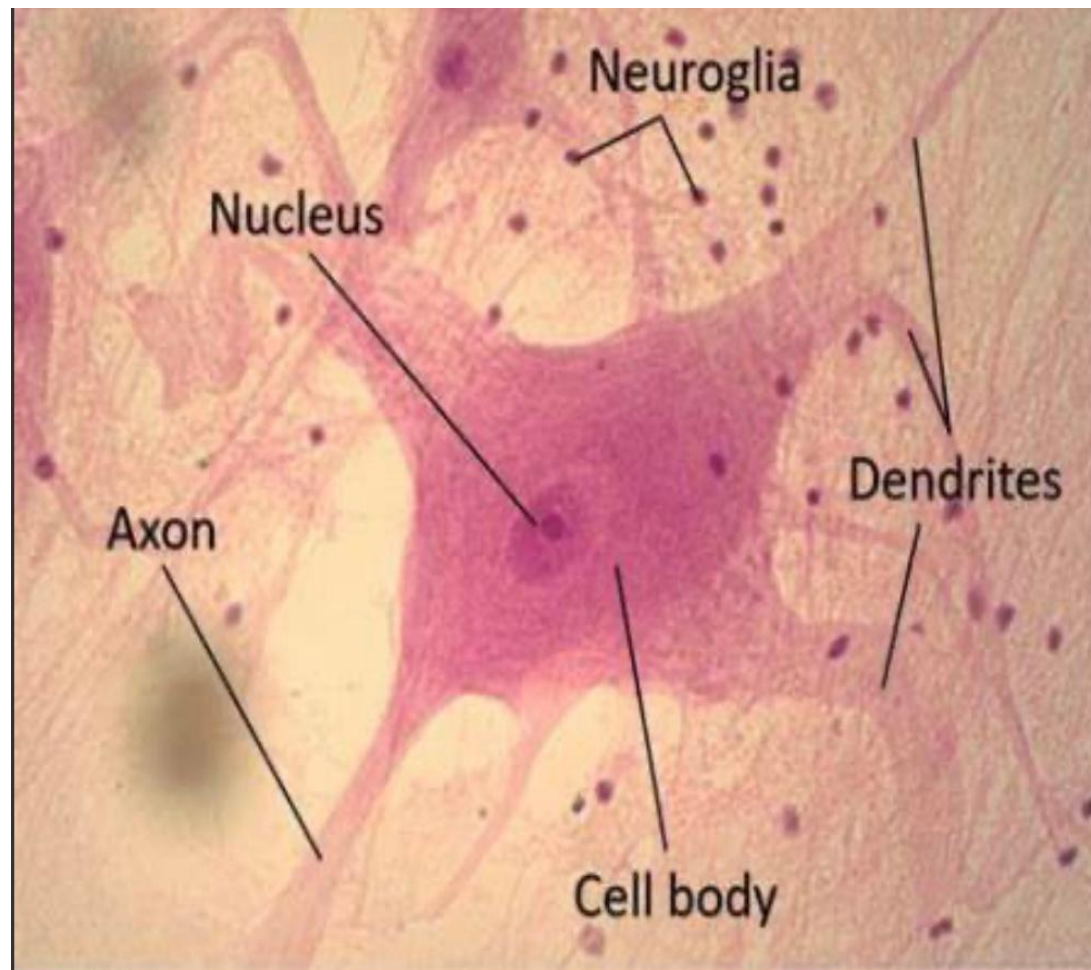
Tissue is a group of cells that have the same structure and function.











Skeletal muscle



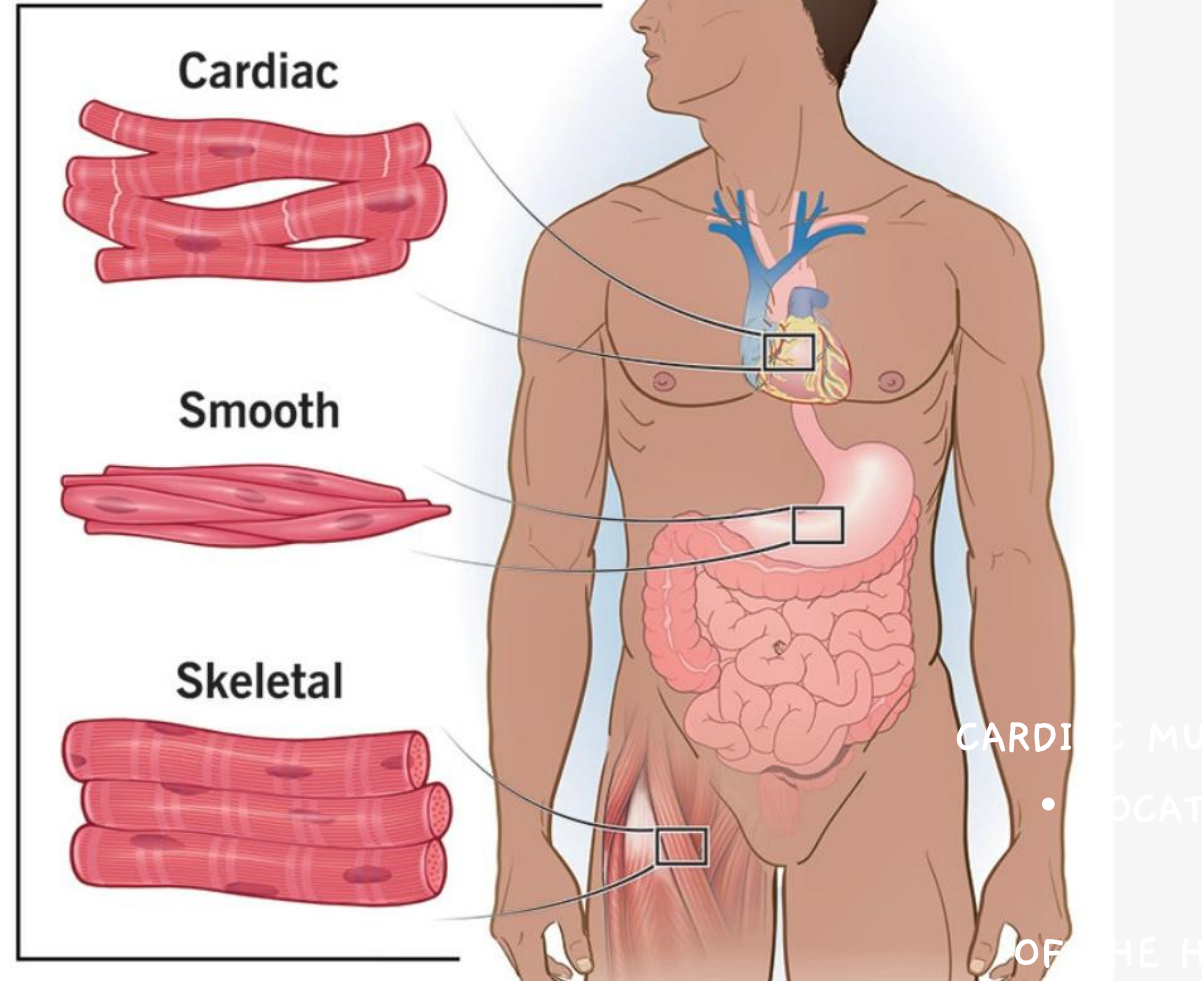
Smooth muscle



Cardiac muscle

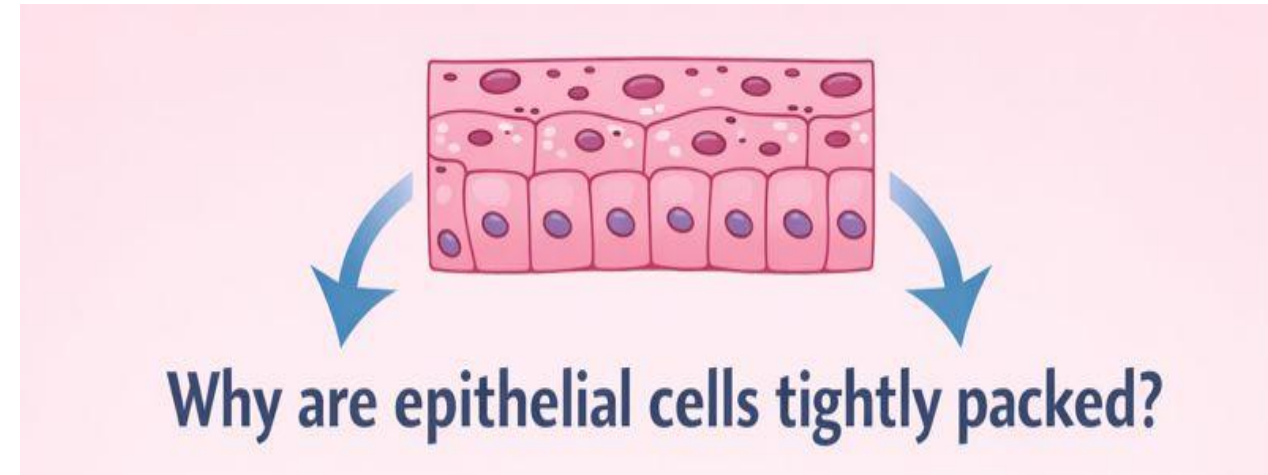


Types of muscles





ASSESSMENT

1. Why are epithelial cells tightly packed?



ASSESSMENT

2. Compare and contrast epithelial tissue and connective tissue.

Compare & Contrast: Epithelial Tissue vs. vs. Connective Tissue		
		
Epithelial Tissue	VS	Connective Tissue
• Structure	• Tightly packed cells in layers	• Loosely packed cells in an extracellular matrix
• Location	• Covers body surfaces & lines organs	• Found throughout the body
• Function	• Protection, absorption, secretion	• Support, binding, and cushioning
• Cellularity	• High cellularity	• Low cellularity
• Vascularity	Avascular (No blood vessels)	Vascular (Rich blood supply)

REFERENCES



- ✓ Ross And Wilson Anatomy And Physiology In Health And Illness, Anne Waugh & Allison Grant
- ✓ Essentials of Medical Physiology, K. Sembulingam & P. Sembulingam (Jaypee Brothers Medical Publishers)
- ✓ Human Anatomy & Physiology Gerard J. Tortora & Bryan H. Derrickson (Wiley)
- ✓ A Textbook of Human Anatomy and Physiology-I, SIA Publishers



Thank You

