

The Functions of Lipids in the Body

Storing Energy

The excess energy from the food we eat is digested and incorporated into adipose tissue, or fatty tissue. Most of the energy required by the human body is provided by carbohydrates and lipids. As discussed in the Carbohydrates chapter, glucose is stored in the body as glycogen. While glycogen provides a ready source of energy, lipids primarily function as an energy reserve. As you may recall, glycogen is quite bulky with heavy water content, thus the body cannot store too much for long. Alternatively, fats are packed together tightly without water and store far greater amounts of energy in a reduced space. A fat gram is densely concentrated with energy—it contains more than double the amount of energy than a gram of carbohydrate. Energy is needed to power the muscles for all the physical work and play an average person or child engages in. For instance, the stored energy in muscles propels an athlete down the track, spurs a dancer's legs to showcase the latest fancy steps, and keeps all the moving parts of the body functioning smoothly.

Unlike other body cells that can store fat in limited supplies, fat cells are specialized for fat storage and are able to expand almost indefinitely in size. An overabundance of adipose tissue can result in undue stress on the body and can be detrimental to your health. A serious impact of excess fat is the accumulation of too much cholesterol in the arterial wall, which can thicken the walls of arteries and lead to cardiovascular disease. Thus, while some body fat is critical to our survival and good health, in large quantities it can be a deterrent to maintaining good health.

Regulating and Signaling

Triglycerides control the body's internal climate, maintaining constant temperature. Those who don't have enough fat in their bodies tend to feel cold sooner, are often fatigued, and have pressure sores on their skin from fatty acid deficiency. Triglycerides also help the body produce and regulate hormones. For example, adipose tissue secretes the hormone leptin, which regulates appetite. In the reproductive system, fatty acids are required for proper reproductive health. Women who lack proper amounts may stop menstruating and become infertile. Omega-3 and omega-6 essential fatty acids help regulate cholesterol and blood clotting and control inflammation in the joints, tissues, and bloodstream. Fats also play important functional roles in sustaining nerve impulse transmission, memory storage, and tissue structure. More specifically in the brain, lipids are focal to brain activity in structure and in function. They help form nerve cell membranes, insulate neurons, and facilitate the signaling of electrical impulses throughout the brain.

Insulating and Protecting

Did you know that up to 30 percent of body weight is comprised of fat tissue? Some of this is made up of visceral fat or adipose tissue surrounding delicate organs. Vital organs such as the heart, kidneys, and liver are protected by visceral fat. The composition of the brain is outstandingly 60 percent fat, demonstrating the major structural role that fat serves within the body. You may be most familiar with subcutaneous fat, or fat underneath the skin. This blanket layer of tissue insulates the body from extreme temperatures and helps keep the internal climate under control. It pads our hands and buttocks and prevents friction, as these areas frequently come in contact with hard surfaces. It also gives the body the extra padding required when engaging in physically demanding activities such as ice- or roller skating, horseback riding, or snowboarding.

Aiding Digestion and Increasing Bioavailability

The dietary fats in the foods we eat break down in our digestive systems and begin the transport of precious micronutrients. By carrying fat-soluble nutrients through the digestive process, intestinal absorption is improved. This improved absorption is also known as increased bioavailability. Fat-soluble nutrients are especially important for good health and exhibit a variety of functions. Vitamins A, D, E, and K—the fat-soluble vitamins—are mainly found in foods containing fat. Some fat-soluble vitamins (such as vitamin A) are also found in naturally fat-free foods such as green leafy vegetables, carrots, and broccoli. These vitamins are best absorbed when combined with foods containing fat. Fats also increase the bioavailability of compounds known as phytochemicals, which are plant constituents such as lycopene (found in tomatoes) and beta-carotene (found in carrots). Phytochemicals are believed to promote health and well-being. As a result, eating tomatoes with olive oil or salad dressing will facilitate lycopene absorption. Other essential nutrients, such as essential fatty acids, are constituents of the fats themselves and serve as building blocks of a cell.

Figure 5.2 Food Sources of Omega 3's

Tools for Change omega 3 fat sources		
Best	Better	Good
Salmon	Scallops	Halibut
Flax seeds	Cauliflower	Shrimp
Walnuts	Cabbage	Cod
	Cloves	Tuna
	Mustard seeds	Soybeans
		Tofu
		Kale
		Collard greens
		Brussel sprouts

Note that removing the lipid elements from food also takes away the food's fat-soluble vitamin content. When products such as grain and dairy are processed, these essential nutrients are lost. Manufacturers replace these nutrients through a process called enrichment.

The Functions of Carbohydrates in the Body

There are five primary functions of carbohydrates in the human body. They are energy production, energy storage, building macromolecules, sparing protein, and assisting in lipid metabolism.

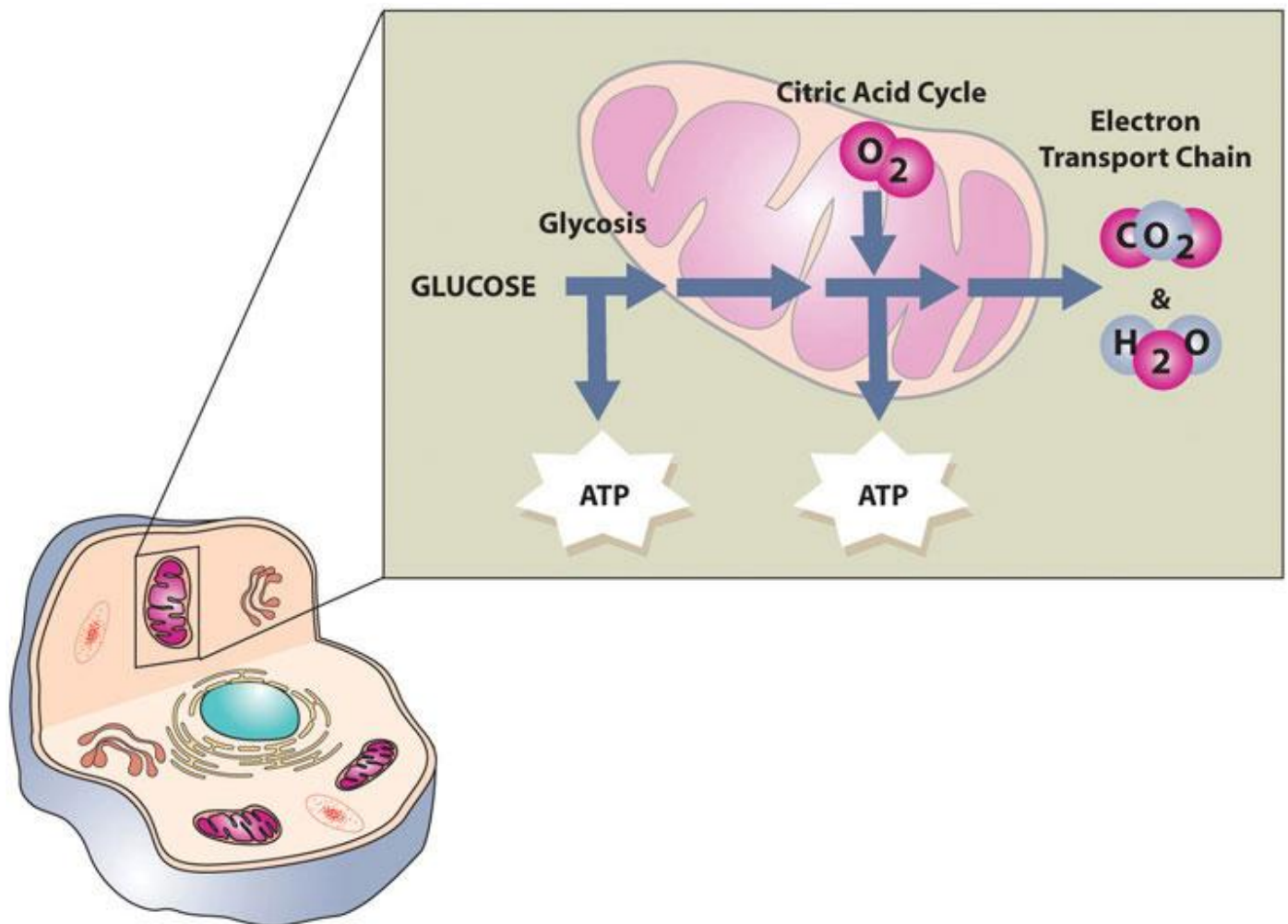
Energy Production

The primary role of carbohydrates is to supply energy to all cells in the body. Many cells prefer glucose as a source of energy versus other compounds like fatty acids. Some cells, such as red blood cells, are only able to produce cellular energy from glucose. The brain is also highly sensitive to low blood-glucose levels because it uses only glucose to produce energy and function (unless under extreme starvation conditions). About 70 percent of the glucose entering the body from digestion is redistributed (by the liver) back into the blood for use by other tissues. Cells that require energy remove the glucose from the blood with a transport protein in their membranes. The energy from glucose comes from the chemical bonds between the carbon atoms. Sunlight energy was

required to produce these high-energy bonds in the process of photosynthesis. Cells in our bodies break these bonds and capture the energy to perform cellular respiration. Cellular respiration is basically a controlled burning of glucose versus an uncontrolled burning. A cell uses many chemical reactions in multiple enzymatic steps to slow the release of energy (no explosion) and more efficiently capture the energy held within the chemical bonds in glucose.

The first stage in the breakdown of glucose is called glycolysis. Glycolysis, or the splitting of glucose, occurs in an intricate series of ten enzymatic-reaction steps. The second stage of glucose breakdown occurs in the energy factory organelles, called mitochondria. One carbon atom and two oxygen atoms are removed, yielding more energy. The energy from these carbon bonds is carried to another area of the mitochondria, making the cellular energy available in a form cells can use.

Figure 4.10 Cellular Respiration



Cellular respiration is the process by which energy is captured from glucose.

Energy Storage

If the body already has enough energy to support its functions, the excess glucose is stored as glycogen (the majority of which is stored in the muscles and liver). A molecule of glycogen may contain in excess of fifty thousand single glucose units and is highly branched, allowing for the rapid dissemination of glucose when it is needed to make cellular energy.

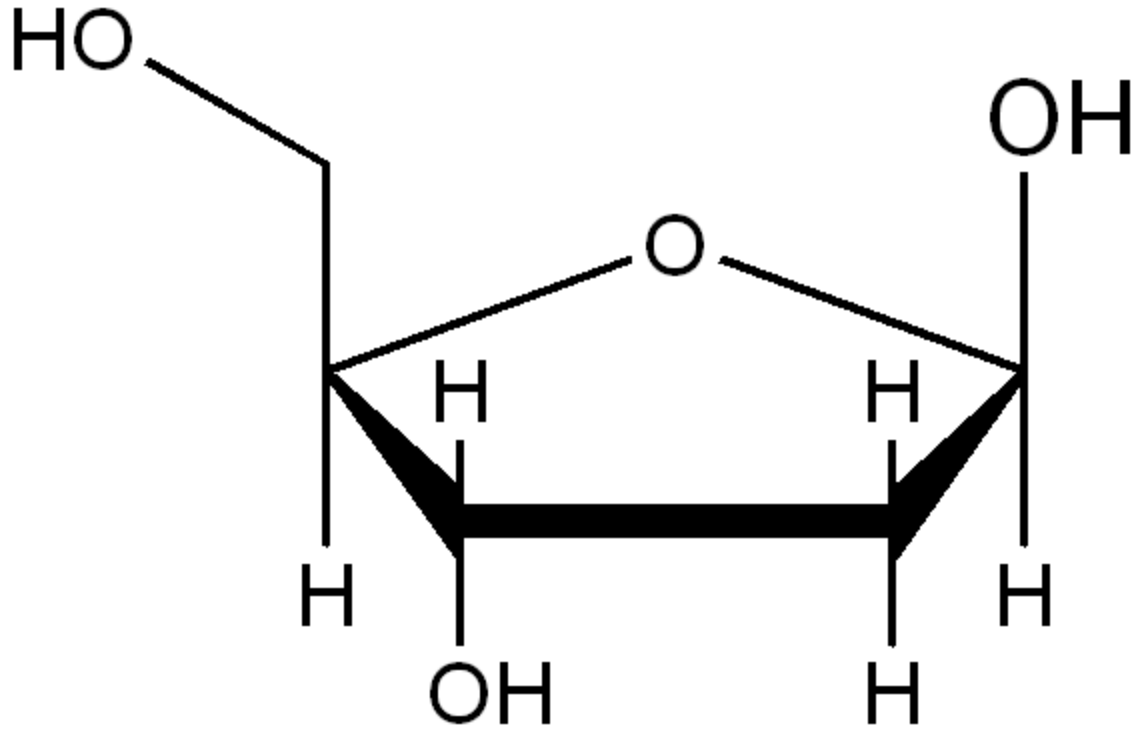
The amount of glycogen in the body at any one time is equivalent to about 4,000 kilocalories—3,000 in muscle tissue and 1,000 in the liver. Prolonged muscle use (such as exercise for longer than a few hours) can deplete the glycogen energy reserve. Remember that this is referred to as “hitting the wall” or “bonking” and is characterized by fatigue and a decrease in exercise performance. The weakening of muscles sets in because it takes longer to transform the chemical energy in fatty acids and proteins to usable energy than glucose. After prolonged exercise, glycogen is gone and muscles must rely more on lipids and proteins as an energy source. Athletes can increase their glycogen reserve modestly by reducing training intensity and increasing their carbohydrate intake to between 60 and 70 percent of total calories three to five days prior to an event. People who are not hardcore training and choose to run a 5-kilometer race for fun do not need to consume a big plate of pasta prior to a race since without long-term intense training the adaptation of increased muscle glycogen will not happen.

The liver, like muscle, can store glucose energy as a glycogen, but in contrast to muscle tissue it will sacrifice its stored glucose energy to other tissues in the body when blood glucose is low. Approximately one-quarter of total body glycogen content is in the liver (which is equivalent to about a four-hour supply of glucose) but this is highly dependent on activity level. The liver uses this glycogen reserve as a way to keep blood-glucose levels within a narrow range between meal times. When the liver’s glycogen supply is exhausted, glucose is made from amino acids obtained from the destruction of proteins in order to maintain metabolic homeostasis.

Building Macromolecules

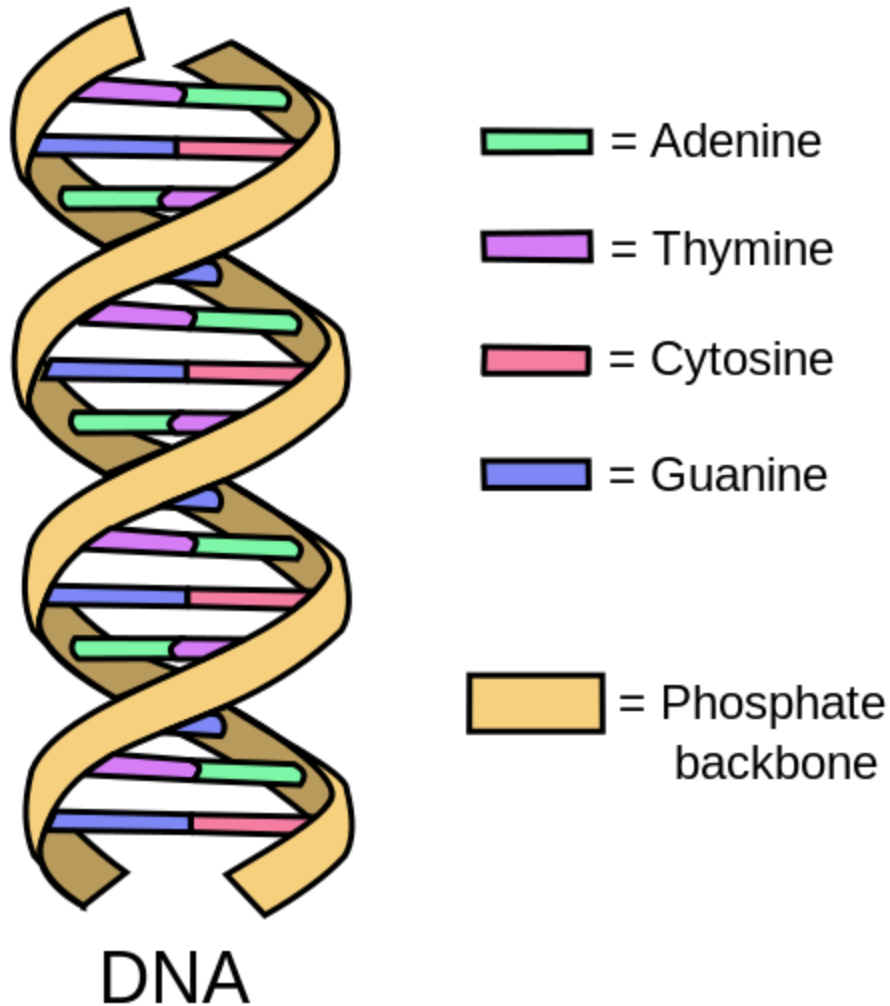
Although most absorbed glucose is used to make energy, some glucose is converted to ribose and deoxyribose, which are essential building blocks of important macromolecules, such as RNA, DNA, and ATP. Glucose is additionally utilized to make the molecule NADPH, which is important for protection against oxidative stress and is used in many other chemical reactions in the body. If all of the energy, glycogen-storing capacity, and building needs of the body are met, excess glucose can be used to make fat. This is why a diet too high in carbohydrates and calories can add on the fat pounds—a topic that will be discussed shortly.

Figure 4.11 Chemical Structure of Deoxyribose



The sugar molecule deoxyribose is used to build the backbone of DNA. Image by [rozeta](#) / [CC BY-SA 3.0](#)

Figure 4.12 Double-stranded DNA



Image

by [Forluvoft](#) / Public Domain

Sparing Protein

In a situation where there is not enough glucose to meet the body's needs, glucose is synthesized from amino acids. Because there is no storage molecule of amino acids, this process requires the destruction of proteins, primarily from muscle tissue. The presence of adequate glucose basically spares the breakdown of proteins from being used to make glucose needed by the body.

Lipid Metabolism

As blood-glucose levels rise, the use of lipids as an energy source is inhibited. Thus, glucose additionally has a “fat-sparing” effect. This is because an increase in blood glucose stimulates release of the hormone insulin, which tells cells to use glucose (instead of lipids) to make energy. Adequate glucose levels in the blood also prevent the development of ketosis. Ketosis is a metabolic condition resulting from an elevation of ketone bodies in the blood. Ketone bodies are an alternative energy source that cells can use when glucose supply is insufficient, such as during fasting. Ketone bodies are acidic and high elevations in the blood can cause it to become too acidic. This is rare in healthy adults, but can occur in alcoholics, people who are malnourished, and in individuals who have Type 1 diabetes. The minimum amount of carbohydrate in the diet required to inhibit ketosis in adults is 50 grams per day.

Carbohydrates are critical to support life’s most basic function—the production of energy. Without energy none of the other life processes are performed. Although our bodies can synthesize glucose it comes at the cost of protein destruction. As with all nutrients though, carbohydrates are to be consumed in moderation as having too much or too little in the diet may lead to health problems.