

# Missing Letters and Numbers:

## Series

Number series

Alphabet Series

Mixed Series

1. Find the missing no in this given series?

1, 6, 15, 28, 45, 66, 91

$5+4=9$   
 $9+4=13$   
 $13+15=28$   
 $21$   
 $25$

2. 5, 11, 23, 47, 95, 191

$6 \times 2 = 12$   
 $12 \times 2 = 24$   
 $24 \times 2 = 48$   
 $48 \times 2 = 96$   
 $96 + 95 = 191$

3. 7, 12, 19, 28, 39, 52

$5+2=7$   
 $7+2=9$   
 $9+2=11$   
 $11+2=13$   
 $13+39=52$

4. 2, 6, 12, 20, 30

$4$   
 $6$   
 $8+12=20$   
 $10$   
 $24/2$   
 $30/2$   
 $24/2$

5. 24, 6, 18, 9, 36, 9, 24, 12

$24/2=12$   
 $12 \times 3=36$   
 $18/2=9$   
 $9 \times 4=36$   
 $24/2=12$

6. 2, 1, 4, 3, 6, 5, 8, 7

$-1$   
 $+3$   
 $-1$   
 $+3$   
 $-1$   
 $+3$   
 $8-1=7$

1.  $1^1, 2^2, 3^3, 4^4, 5^5$   
 $+ 1, 4, 27, 256, 3125$

8.  $285, 253, 221, 189, \underline{157}$   
 $-32 \quad -32 \quad -32 \quad 189-32=157$

285	253	189
253	221	32
253	32	157
32		

9.  $8, 3, 11, 14, 25, \underline{39}$   
 $+ \quad + \quad (27 \times 1) + 4 + 12 \quad 25+14=39$

10.  $3, 8, 27, 112, \underline{565}, 3386$   
 $(3 \times 2 + 2 - 8) \quad (8 \times 3 + 3 = 27) \quad ((112 \times 5) + 5 = 565)$

$2^3+1 \quad 3^3+1 \quad 4^3+1 \quad 5^3+1 = 125+1 = 126$

11.  $2, 9, 28, 65, \underline{126}$   
 $7 \quad 19 \quad 37$

12.  $31, 13, 45, 54, \underline{36}, 63$  (animes)

13.  $8, 27, 64, \underline{125}$   
 $2^3 \quad 3^3 \quad 4^3 \quad 5^3 = 125$

14.  $6, 9, 12, 15, 18, \underline{21}$   
 $+3 \quad +3 \quad +3 \quad +3 \quad 18+3=21$

15.  $107, 97, 82, 62, \underline{37}$   
 $-10 \quad -15 \quad -20 \quad -25 \quad 62-25=37$

# Alphabet Series

EJOTY  
 ↓ ↓ ↓ ↓ ↓  
 5 10 15 20 25

1. Complete the missing term:

ABC, FGH, LMN, STU  
 DE                  DJK                  OPQR

2. DHL, PTX, BFS, NRV  
 EFGH JK      QRS UVW      XYZ ABC      ILMN OPQR STU

3. CAT, FDW, TGI, LJC  
 BC                  EF                  HI  
 DE      uv      GH      xy      JK      AB

4. WYV, PRO, JKH, BDA  
 STU                  LMN                  EFG                  C

5. QYK, MVG, ISG, EPE  
 NOP      J      JKL      H      FGH      F  
 WX      TO      QR

6. DIB, HMF, LQJ, PUN  
 JKL      NOP      RST  
 EFG      GHI      IJK      KLM      MNO      RLM

7. NOA, PQB, RSC, TUD  
 P      R      T  
 O      Q      S

8.  $\overbrace{ADG}^{14}, \overbrace{GLM}^{12}, \overbrace{MPS}^{16}, \overbrace{SVY}^{19}$   
 $\underbrace{HIJKL}_{CD}, \underbrace{NOPQR}_{FG}, \underbrace{TUVWX}_{IS}$

$\begin{array}{r} 19+ \\ 3 \\ \hline 22 \end{array}$       $\begin{array}{r} 13+ \\ 3 \\ \hline 16 \end{array}$       $\begin{array}{r} 1+ \\ 3 \\ \hline 4 \end{array}$

9.  $\overbrace{BNO}^{M}, \overbrace{EOQ}, \overbrace{HQs}, \overbrace{KSO}$   
 $\underbrace{HI}_{NO}, \underbrace{KL}_{R}$

10.  $\overbrace{CGK}, \overbrace{ETP}, \overbrace{GMO}, \overbrace{IPZ}$   
 $\underbrace{D}, \underbrace{F}, \underbrace{H}, \underbrace{NO}$

11.  $\overbrace{NOAB}, \overbrace{OPBC}, \overbrace{PQCD}, \overbrace{QRE}$   
 $\underbrace{EF}, \underbrace{HI}, \underbrace{KL}$

12.  $\overbrace{KDW}, \overbrace{MGT}, \overbrace{OSTQ}, \overbrace{QMN}$   
 $\underbrace{L}, \underbrace{N}, \underbrace{P}$

13.  $\overbrace{ADH}, \overbrace{DGK}, \overbrace{GTJN}, \overbrace{IMQ}$   
 $\underbrace{BC}, \underbrace{IJ}, \underbrace{EF}, \underbrace{LM}, \underbrace{HI}, \underbrace{OP}$

14.  $\overbrace{DFI}, \overbrace{KMP}, \overbrace{RTW}, \overbrace{YAD}$   
 $\underbrace{EFGHIJ}, \underbrace{LMNOPQ}, \underbrace{STUVWX}$

15.  $\overbrace{WV}, \overbrace{TS}, \overbrace{QP}, \overbrace{NM}, \overbrace{KJ}, \overbrace{HG}$   
 $\underbrace{LM}, \underbrace{KL}, \underbrace{IJ}, \underbrace{HI}$

FEBRUARY 2020

W	M	T	W	T	F	S	S
5	6	7	8	9	10	11	12
13	14	15	16	17	18	19	20
21	22	23	24	25	26	27	28
29	30	31					

# Reasoning Series:

1. A O B N, D R E Q, G I O H T, J X K W,  
<sup>BC</sup> <sup>EF</sup> <sup>HI</sup>

2. W T P M I F B Y U  
<sub>DAI EDE ZA</sub> <sub>VWX</sub>

3. B M R G, D L T F, F K V E, H J X D, J I X C  
<sub>C</sub> <sub>E</sub> <sub>G</sub> <sub>I</sub>

4. X Y Z C B A U V W F E D R S T

5. M N O | A B C | P Q R | D E F | S T U | G | H I

6. D E F, H I J, M N O, S T U  
<sup>G</sup> <sup>KL</sup> <sup>PQR</sup>

7. W V, P O, I H, B A, U T  
<sub>PQRSTU</sub> <sub>JKLMN</sub> <sub>CDEFG</sub> <sub>ZYXWV</sub>

8. Z T W, Y S V, X R U, W Q T

9. D F, G I J, K M, N Q, R T, U X  
<sub>E</sub> <sub>L</sub> <sub>S</sub> <sub>VW</sub>

JANUARY						
W	M	T	W	T	F	S
	6	7	8	9	10	11
12	13	14	15	16	17	18
19	20	21	22	23	24	25
26	27	28	29	30	31	

10. G, <sup>JK</sup>P, L, <sup>QRST</sup>P, U

GH MNO

11. <sup>FGH</sup>A, E, I, <sup>NOP</sup>M, Q, U

BCD

12. B, K, S, D, J, T, <sup>E</sup>F, L, U, <sup>S</sup>H, H, V, J, G, W

C G

13. A, B, D, G, K

C <sup>EF</sup> H, I, J

14. <sup>Q</sup>V, W, R, <sup>O</sup>T, U, P, <sup>M</sup>R, S, N, P, Q, L

U S Q

15. R, M, <sup>GH</sup>I, F, D, C

J, K, L E

16. <sup>EFGH</sup>G, I, D, <sup>JKLMNO</sup>D, I, A, P, <sup>QRSTUVWXYZ</sup>X, Y, U, J

EF BC YZ VW

17. W, V, U, T, S, R, Q, P, O, N, M, L

ST PQ

18.  $\underbrace{P, M, J, G}_{NO}, \overbrace{D}^{KL}, D$

19.  $\overbrace{AA}^{BC}, \overbrace{DB, IC, PD}^{EFGH}, \overbrace{YE}^{IJKL}, \overbrace{MNO, PQRSTU, VWX}^{RSTUVWX}$

20.  $T, R, O, \underbrace{M, J, H}_{N}, \overbrace{E}^{KL}, \overbrace{I}^{FG}$

21.  $\overbrace{ABC, BDF, CFD}^{DE}, \overbrace{DHL}^{JK}, \overbrace{GH}$

22.  $\overbrace{A, C, E, G}_{B}, \overbrace{I}^{D}, \overbrace{H}$

23.  $z x \sqrt{TRP} \underbrace{NLIH}_{G} \overbrace{FD}_{C} B$  (VPHB)

24.  $a c \underline{e} g \underline{a} \underline{c} \underline{e} g \underline{a} \underline{c} e g$  (ecag)

25.  $c c \underline{a} c c \underline{b} \underline{c} \underline{c} \underline{a} c c \underline{b} \underline{c} \underline{c} \underline{a} c \underline{c} \underline{b}$  (acac)

26.  $z y \underline{x} \underline{w} \underline{w} \underline{x} y z z \underline{y} \underline{x} \underline{w} \underline{x} y \underline{z}$  (WXYZ)

27.  $a \underline{b} \underline{n} \underline{c} \underline{b} \underline{a} \underline{b} \underline{n} \underline{c} \underline{b} \underline{a} \underline{b} \underline{n} \underline{c} \underline{b}$  (bcabab)

28.  $\underline{b} \underline{a} \underline{a} \underline{b} \underline{b} \underline{a} \underline{a} \underline{b} \underline{b} \underline{a} \underline{a} \underline{b} \underline{b} \underline{a} \underline{a} \underline{b}$  (bbaaab)

29.  $m \underline{a} \underline{n} \underline{m} \underline{a} \underline{n} \underline{m} \underline{a} \underline{n} \underline{m} \underline{a} \underline{n} \underline{m} \underline{a} \underline{n}$  (aammnn)

JANUARY						
W	M	T	W	T	F	S
1	2	3	4	5	6	7
8	9	10	11	12	13	14
15	16	17	18	19	20	21
22	23	24	25	26	27	28
29	30	31				

30. m b b m a a m b b a a m b b (mabam)

31. l n n m m l l m m n n l (nmmn)

32. a b a a b a a b a a b a (ababa)

33. n n m m n n m m n n m m n n m m (nnmm)

Reasoning  $\Rightarrow$  coding and decoding. EJO TY  
5 10 15 20 25

Opposite letters:

A - Z. G.T. Road Kamala Prasad  
 Honey Singh LOVE  
 Indian Rails MaN  
 JaQ  
 Dew

2 Sunday 02.02.2020

Week 5 033333

FatU

(Adding opposite letters sum is 27)

Ex:  $L = 12 + 15 = 27 \Rightarrow O$

1. If A=1, PAT=37, then TAP = 37  
 $PAT = 16 + 1 + 20 = 37$       $20 + 1 + 16 = 37$

2. If D=4, BAD=7, Then ANT = 35  
 $2 + 1 + 4 = 7$       $1 + 14 + 20 = 35$

FEBRUARY 2020						
W	M	T	W	T	F	S
						5
6	7	8	9	10	11	12
13	14	15	16	17	18	19
20	21	22	23	24	25	26
27	28	29	30	31		



3. If  $C=3$ , FEAR = 30, Then HAIR = 36  
 $5+5+1+18=30$   $8+1+9+18=36$

4. If  $X=26$ , NET = 39, Then NOT = 55  
 $14+5+20=39$   $14+21+20=55$

5. If  $F=6$ , MAT = 34, Then CAR = 22  
 $13+1+20=34$   $3+1+18=22$

6. If RAMAN and DINESH  
 1 2 3 4 5                  6 7 5 4 8 9

Then, HAMAM - 92323

7. If RED is coded as 6720, then  
 GREEN would be 1677209

RED =  $(18+2)(5+2)(4+2) = 2076 \Rightarrow 6720$   
 18 5 4

GREEN = 1677209

7, 18, 5, 5, 14

8. KASHMIR written as 8142753

Then RINSHAK is 3572218

9. If BROTHER ; SISTER then  
 2 4 5 6 7 8 4                  9 1 9 6 8 4

ROBBERS is 4522849

FEBRUARY							2020
W	M	T	W	T	F	S	S
5				6	7	8	9
6	3	4	5	6	7	8	9
7	10	11	12	13	14	15	16
8	17	18	19	20	21	22	23
9	24	25	26	27	28	29	30

10. If CLOUD and RAIN then AROUND  
59432 1678 614382

11. If GARDEN, WATER then, WARDEN  
325764 92165 925764

12. If DELHI, CALCUTTA then, CALICUT  
73541 82589662 8251896

13. If RUSH is 66 then GIRL is 46.  
 $RUSH = 18 + 21 + 19 + 8 = 66$   $GIRL = 7 + 9 + 18 + 12 = 46$

14. If Love is 27 then COME is 18.  
 $LOVE = 12 + 15 + 22 + 5 = 54 \div 2 = 27$   $COME = 3 + 15 + 13 + 5 = 36 \div 2 = 18$

15. If HOSPITAL, then Postal is  
32574618 725618

16. If CAT is 3120 then NAVIN = 141222914  
3120

17. If EDITION, then TIDE  
3891965 1983

18.

18. If PREMA then RAMA  
96731 6131

MARCH						
W	M	T	W	T	F	S
29	30	31				
1	2	3	4	5	6	7
8	9	10	11	12	13	14
15	16	17	18	19	20	21
22	23	24	25	26	27	28
29						

19. If UNIVERSITY, then TRUSTY  
 1273948756 541856

20. If BUILDING and RIVER then BRIDGE  
 A1527596 85308 485760

21. If MONKO then, KLJMN be  
 57637 34256

MONKO = 13, 15, 14, 12, 15 adding 1  
 4 6 5 2 6 57637

KLJMN = 11 12 10 13 14 adding 1  
 2 3 1 4 5 34256

22. Let, J=1, K=2, L=5, M=7, N=11, O=13  
 P=17. Find the letter to be inserted in the  
 box in the relation given:

$(N \times ? + M) \div K = 31$  L

$(11 \times 5 + 7) \div 2 = 31$

$(55 + 7) \div 2 = 31$

23. If S=19, Sun=54 and Cake=20, then  
 mistake = 78

Sun = 19 + 21 + 14 = 54      Cake = 3 + 1 + 11 + 5 = 20 78

24. If D=A, DOG=26, ANIMAL=50

DOG = 4 + 15 + 7 = 26      1 + 14 + 9 + 13 + 1 + 12 = 50

FEBRUARY						
W	T	W	T	F	S	S
1	2	3	4	5	6	7
8	9	10	11	12	13	14
15	16	17	18	19	20	21
22	23	24	25	26	27	28
29	30					

25. A = 26, X-RAY = 40, WHAT = 56

X-RAY = ~~26+31~~ <sup>3+9+26+2</sup> = 40    WHAT = 4+19+26+7 = 56

26. If A = 1, AND = 19, then ANT = 35

AND = 1+14+4 = 19    ANT = 1+14+20 = 35

27. E = 5, PEN = 35, PAGE = 29

PEN = 16+5+14 = 35    PAGE = 16+1+7+5 = 29

28. CAB = 6, Leg = 6 then MAP is 3

CAB = 3+1+2 = 6    <sup>ly</sup> 12+5+7 = 24 = 2+4 = 6, MAP = 13+1+16 = 30 = 3

29. If BALL = 27, CANE = 23, then YELL = 54

BALL = 2+1+12+2 = 27    CANE = 3+1+14+5 = 23    YELL = 25+5+12+12 = 54

30. HIM = 60, HER = 62, then HIS = 72

HIM = 8+9+13 = 30x2 = 60    HER = 8+5+18 = 31x2 = 62    HIS = 8+9+19 = 36x2 = 72

31. If PER = 78, PEN = 70, then OWL = 100

PER = 16+5+18 = 39x2 = 78    PEN = 16+5+14 = 35x2 = 70    OWL = 15+23+12 = 50x2 = 100

32. If PANT = 51, then DOGS = 45

PANT = 16+1+14+20 = 51    DOGS = 4+15+7+19 = 45

MARCH 2020

W	M	T	W	T	F	S	S
9	10	31					1
10	2	3	4	5	6	7	8
11	9	10	11	12	13	14	15
12	16	17	18	19	20	21	22
13	23	24	25	26	27	28	29

33. CAB = 12, FED = 30, HIDE = 52

CAB = 3+1+2 = 6x2 = 12    FED = 6+5+4 = 15x2 = 30    HIDE = 8+9+4+5 = 26x2 = 52

34. HECK = 94410, DIGI = 588 BIKE = 38124  
BIKE = 2+1=3, 2=9-1=8, K=11+1=12, E=5-1=4

35. CROWN = DTRAS, BLEAK = CNHEP,  
STUMP = TVXQU

36. If GOAD = IQNF, WIND = YKPE

37. HRUT = FISH, UVCD = STAB

38. CONSCIOUSLY = PEBNDJEXNKM,  
SOIL = NEJK

39. NOIDA = STNIF then, MEERUT = RJJWZY  
14 19 13 5 5 18 21 20 18 10 10 23 24 25

40. FORGET = DPPHCU, then DOCTOR = BPAUMS

41. DECEMBER = ERMBCED E then, ERMBVENO =

MENTAL = LNDFEM OSUXBKM  
TEST = SUDFRTSU

43. TYPEWRITER = GBKVDIRGVI  
STENO = HGVML (opposite letters)

FEBRUARY						
W	M	T	W	T	F	S
	2	3	4	5	6	7
	8	9	10	11	12	13
	14	15	16	17	18	19
	20	21	22	23	24	25
	26	27	28	29	30	31

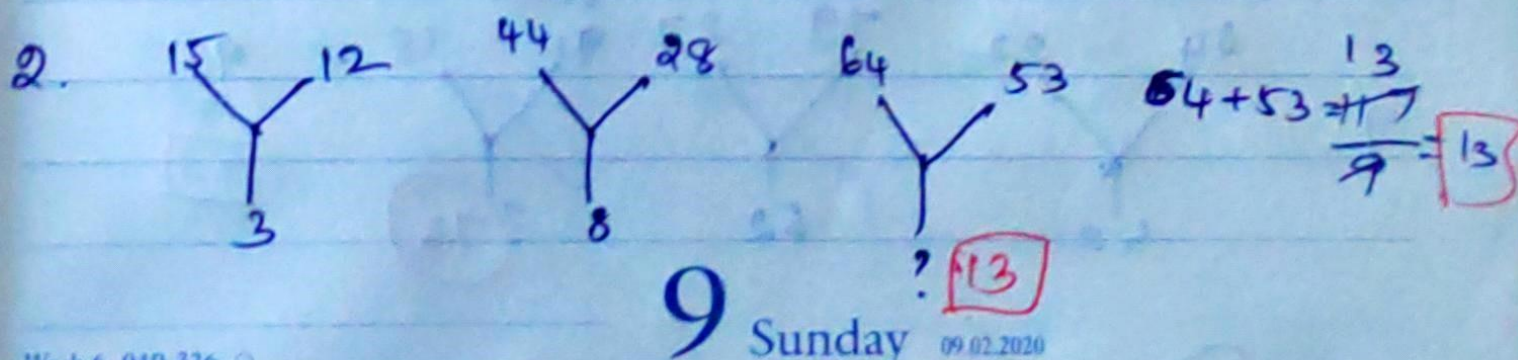
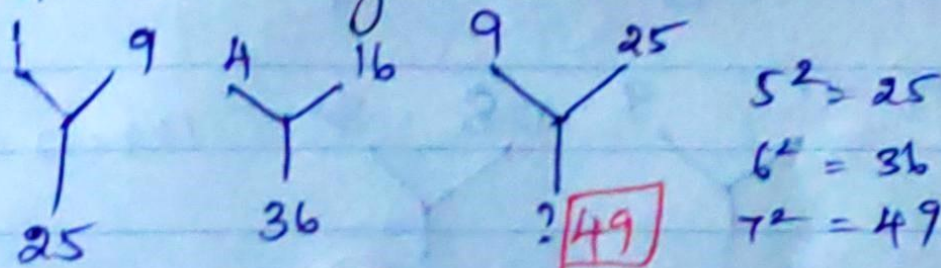
44. If MARKS = ZNEF, ARMS = ~~NEZF~~ **NEZF**

45.  $\frac{BAT}{C} = \frac{DCV}{N}$ , then  $\frac{MAN}{N} = \frac{OCP}{N}$

46.  $\frac{CAT}{C} = \frac{CNANT}{N}$ , then,  $\frac{GOD}{C} = \frac{GINOND}{N}$

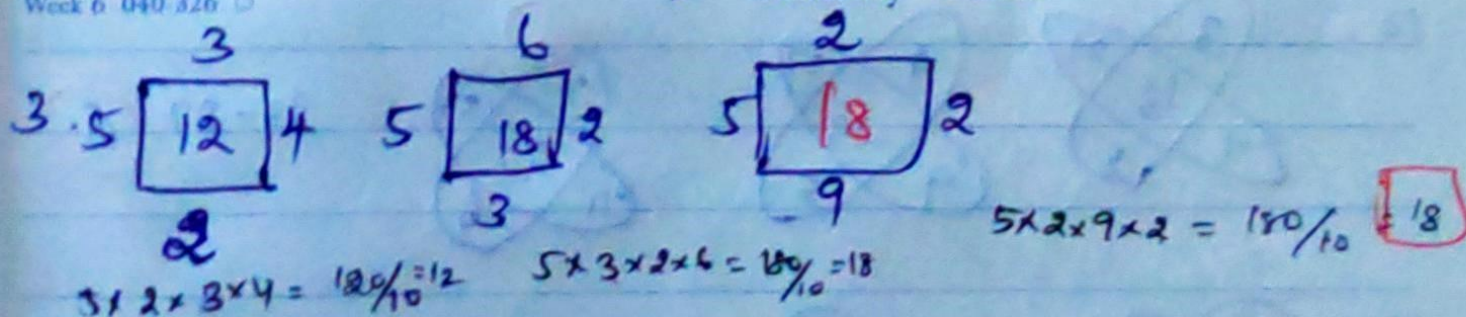
### Missing Numbers:

1. Find the missing No from the following.



Week 6 040 326

9 Sunday 09.02.2020



MARCH							2020						
W	T	F	S	S	S	S	1	2	3	4	5	6	
8	9	10	11	12	13	14	15	16	17	18	19	20	
21	22	23	24	25	26	27	28	29	30	31			

$15 - 9 = 6$   
 $16 - 22 = -6$   
 $11 - 7 = 4$   
 $13 - 9 = 4$   
 $21 - 13 = 8$   
 $22 - 15 = 7$

2020

5.  $34 + 7 = 41$

$34 - 14 = 20$   
 $11 - 6 = 5$   
25

6.  $9 + 30 = 39$

$3 \times 4 = 12$   
 $5 \times 5 = 25$   
37

7.  $1 - 30 - 3$

$2 - 54 - 4$

$3 - ? - 5$

$3 + 6^2 = 36 + 9 = 45$   
 $4 + 5^2 = 25 + 16 = 41$   
86

8.  $13, 19, 4$

$11, 9, 10$

$128, 32, ?$

$128 + 32 = 160$   
 $\frac{160}{8} = 20$   
20

9.  $64, 22, 42$

$19, 27, 52$

$91, 18, ?$

$91 - 18 = 73$   
73

10.  $3, 21, 7, 5, 18$

$33 - 27 = 6$   
6

11.  $5, 4, 3, 1, 23$

$11 \times 2 = 22$   
 $9 \times 2 = 18$   
 $x = 2$   
2

FEBRUARY						
W	M	T	W	F	S	S
5	6	7	8	9	10	11
12	13	14	15	16	17	18
19	20	21	22	23	24	25
26	27	28	29	30		

40.

$6+8+7+4 = 25$   
 $\sqrt{25} = 5$

$12-9 = 3$   
 $3 \times 2 = 6$

$10+14+16+9 = 49$   
 $\sqrt{49} = 7$

41.

$2+3+4+5 = 14 \times 3 = 42$

$3+6+5+4 = 18$   
 $18 \times 3 = 54$

42.

$3^2+4^2+2^2 = 4+4+16+9 = 29$

$9 \times 3 = 27$

$3^2+4^2+5^2+6^2 = 9+16+25+36 = 86$

50.

$7 \times 4 = 28$   
 $\frac{28}{9} = 19$

$9 \times 3 = 27$   
 $\frac{27}{6} = 21$

50.

$9 \times 3 = 27$   
 $\frac{27}{6} = 21$

**16** Sunday 16.02.2020

51.

$A \times 3 \times -1 = -12$

52.

$3^3+2^3 = 27+8 = 35$

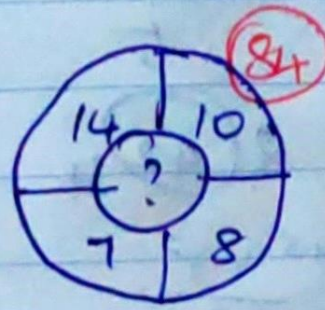
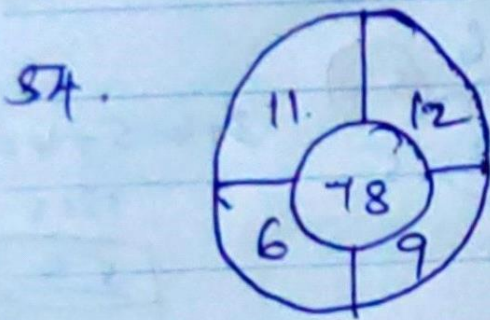
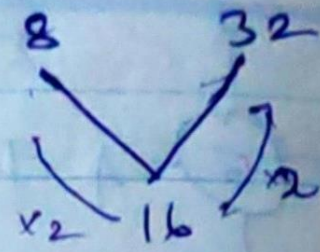
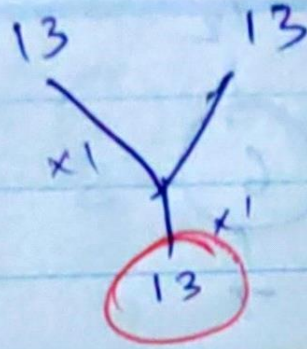
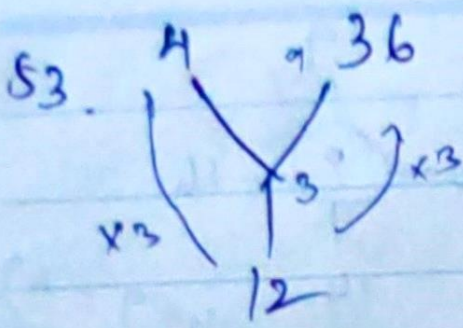
$1^5 = 1$   
 $5^5 = 3125$   
 $1+3125 = 3126$

$3^3+4^3 = 27+64 = 91$

MARCH 2020

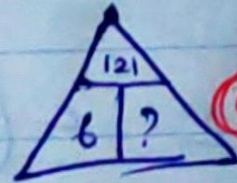
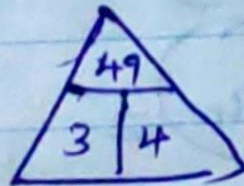
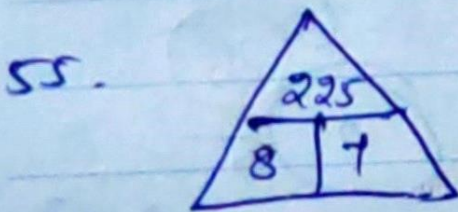
W	M	T	W	T	F	S	S
9	30	31					
10	2	3	4	5	6	7	8
11	9	10	11	12	13	14	15
12	16	17	18	19	20	21	22
13	23	24	25	26	27	28	29





$14 \times 10 = 140$   
 $7 \times 8 = 56$

84



$6 + 5 = 11^2 = 121$

$8 + 7 = 15^2 = 225$

FEBRUARY						
	M	T	W	T	F	S
1	2	3	4	5	6	7
8	9	10	11	12	13	14
15	16	17	18	19	20	21
22	23	24	25	26	27	28
29	30	31				