



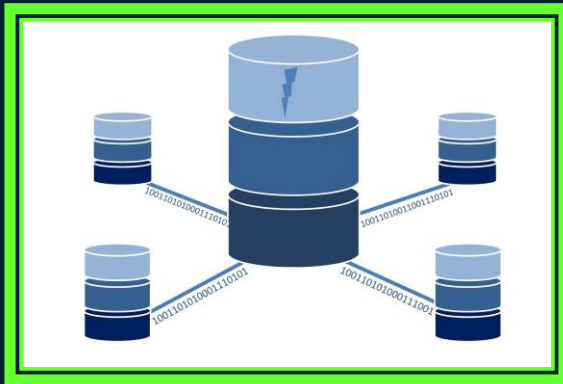
# Recap....

- > Sources of Data
- > API
- > Examples





# Guess Your Topic.....





# Introduction

## Relational Database

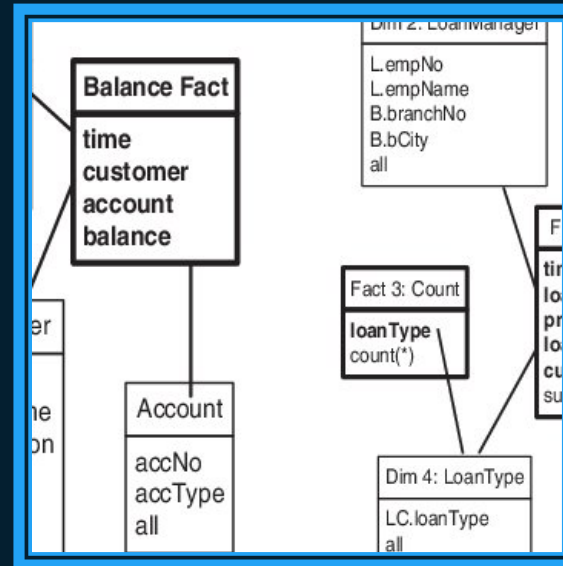
### What is a Database?

Organized collection of data.\*

#### Relational Database:

- Structured tables
- Dominant form
- Easy to use

\*From Wikipedia.





# Table.....

## Tables

duration	movie_title	title_year	budget
103	Ice Age	2002	59000000
87	Despicable Me	2013	76000000
97	Charlotte's Web	2006	

**Fields = columns.**

**Each field has a name, and a type (integer, text, etc.)**

**Rows = tuples.**

**For some rows, some fields may be empty (NULL).**



# Primary Key....

## Primary Key

duration	movie_title	title_year	budget
103	Ice Age	2002	59000000
87	Despicable Me	2013	76000000
97	Charlotte's Web	2006	

If some field uniquely identifies rows (no two distinct rows have the same value), that's a primary key.

This table has no primary key.

Many database systems will create a primary key if needed.



# SQL....

## SQL

Structured Query Language

Common language for working with databases.

- Querying
- Manipulating
- Managing

Many variants (mostly similar); we'll use one of those in our software.



# SQL : Basic Form

## SQL: basic form

Select (what fields/calculations you want to see)

From (which table(s) you want to pull from)

Where (what conditions need to be satisfied)

(Options: order by, group by, ...)



# Time for Assessment....

1. Primary key helps to make more important decision (True/False)
2. Columns are Tuples (True /False)





# SUMMARY.....

- ❖ **Relational Database**
- ❖ **Table**
- ❖ **Primary Key**
- ❖ **SQL**
- ❖ **SQL : Basic Form**



# Reference...

- [https://www.w3schools.com/sql/sql\\_create\\_db.asp](https://www.w3schools.com/sql/sql_create_db.asp)
- <https://www.youtube.com/watch?v=I B3Bp0hqS98>

