



SNS COLLEGE OF TECHNOLOGY

Coimbatore - 35



23BAT613 – Artificial Intelligence for Managers

Unit II – Unboxing ML & Its Applications



Presented by

Ms.S.D.Shamini

Design Thinker

Redesigning Common Mind & Business Towards Excellence

1st Indian
Institution
to Implement
& Patent
Design
Thinking
FrameWork

sns
INSTITUTIONS
www.snsgroups.com

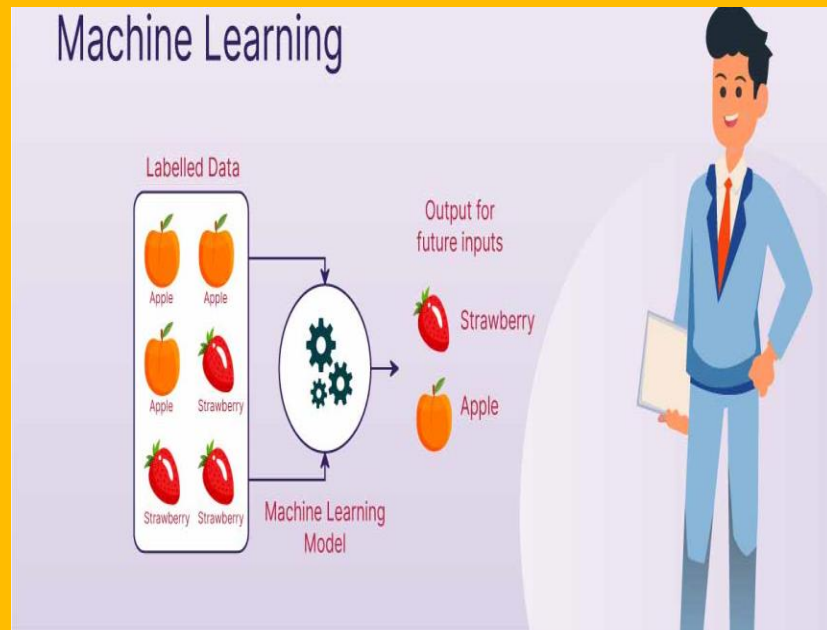
Sri SNS Charitable Trust
CELEBRATING
25
th Year
SILVER JUBILEE

Build an Entrepreneurial Mindset through our Design Thinking FrameWork



Guess the Topic!!!

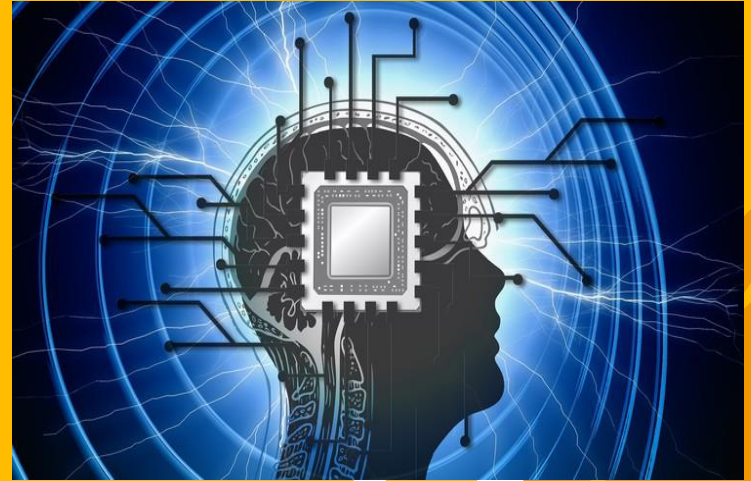
Supervised Learning





Recap

- Reason to study ML
- Introduction to ML
- ML Process
- ML Workflow
- How does ML works?
- Types of ML





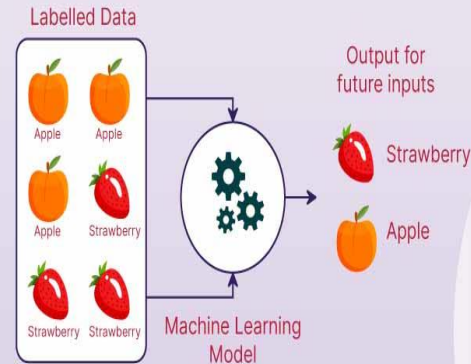
Discussion about....

- Reason to study Supervised Learning
- Supervised Learning



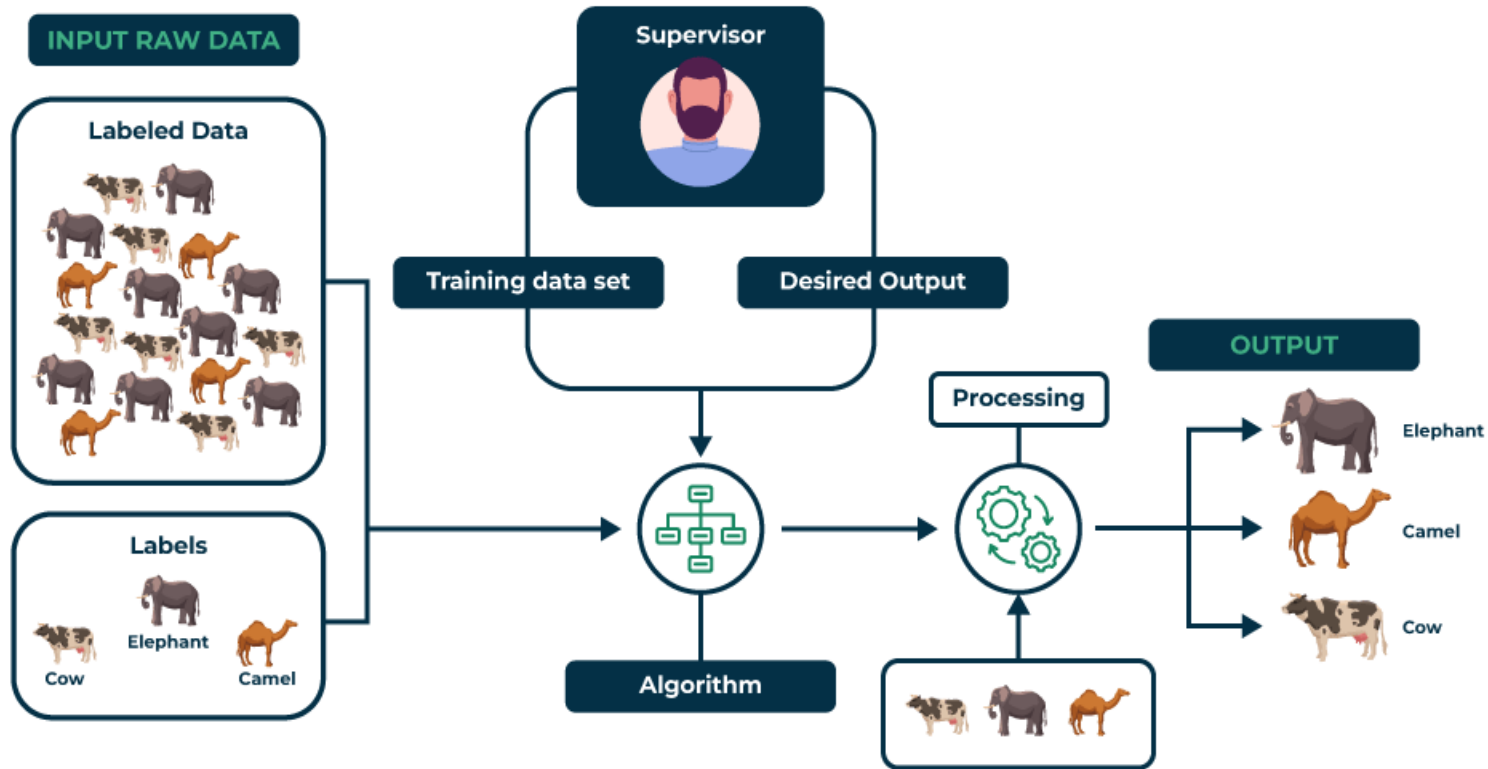


Supervised Machine Learning



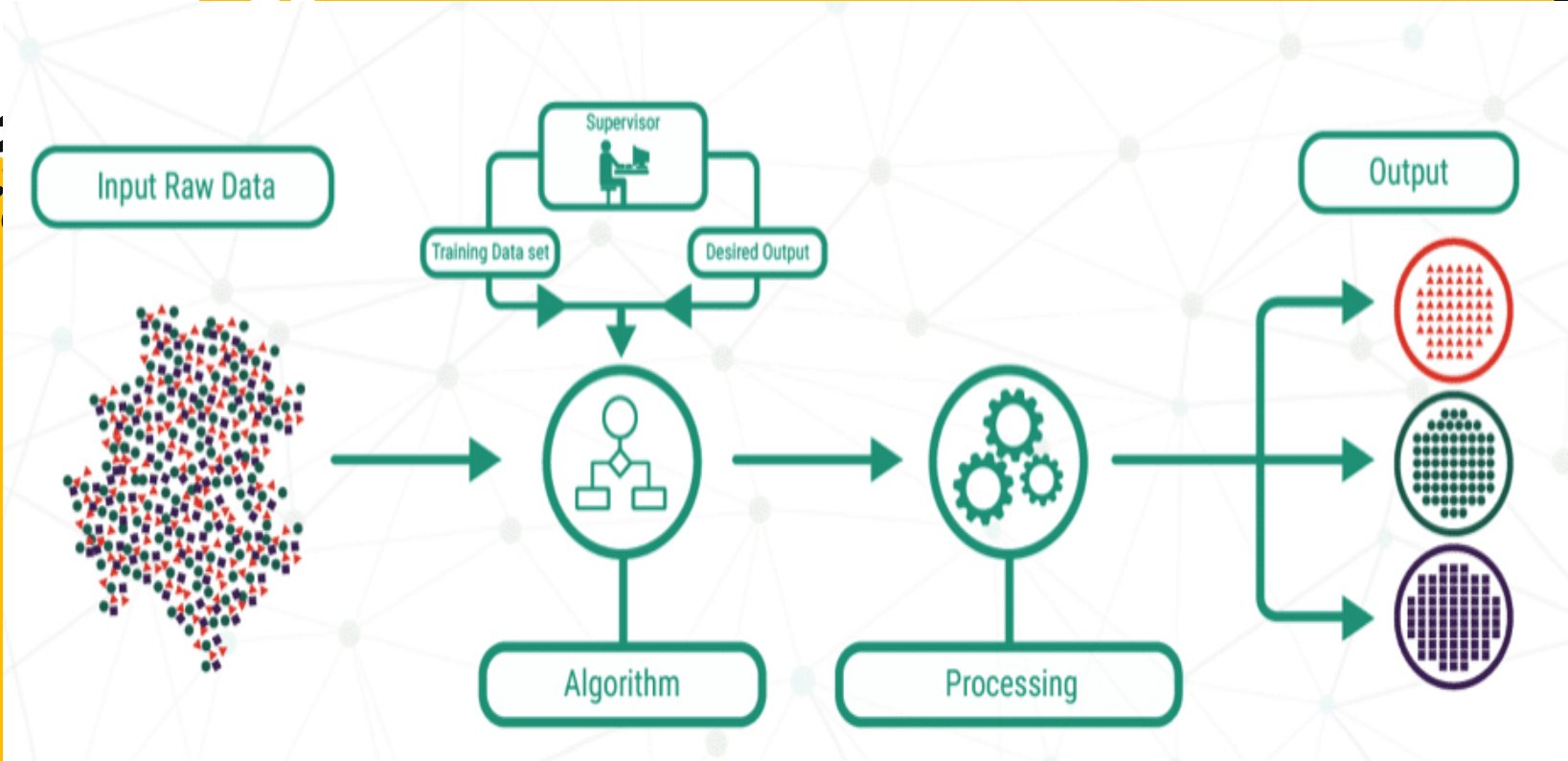


Supervised Learning



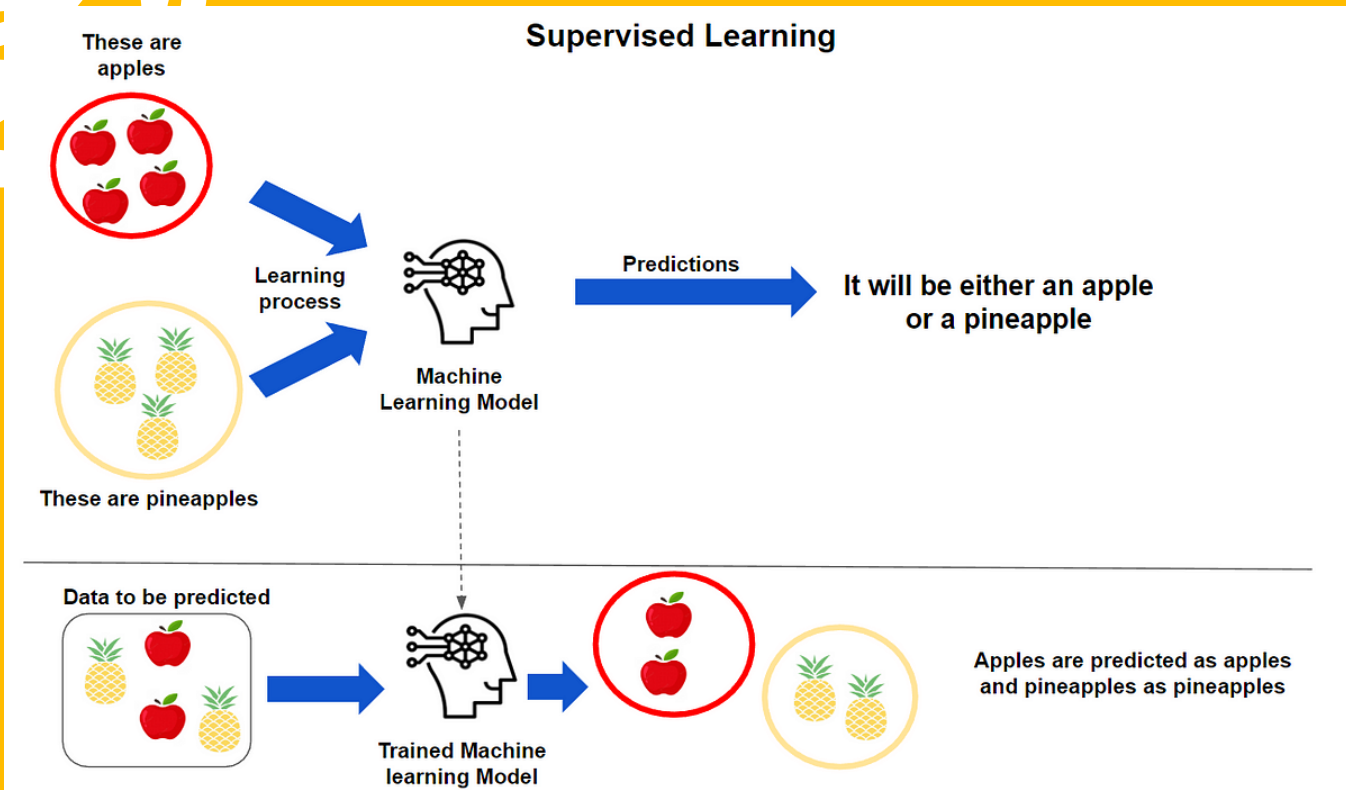


Supervised Learning



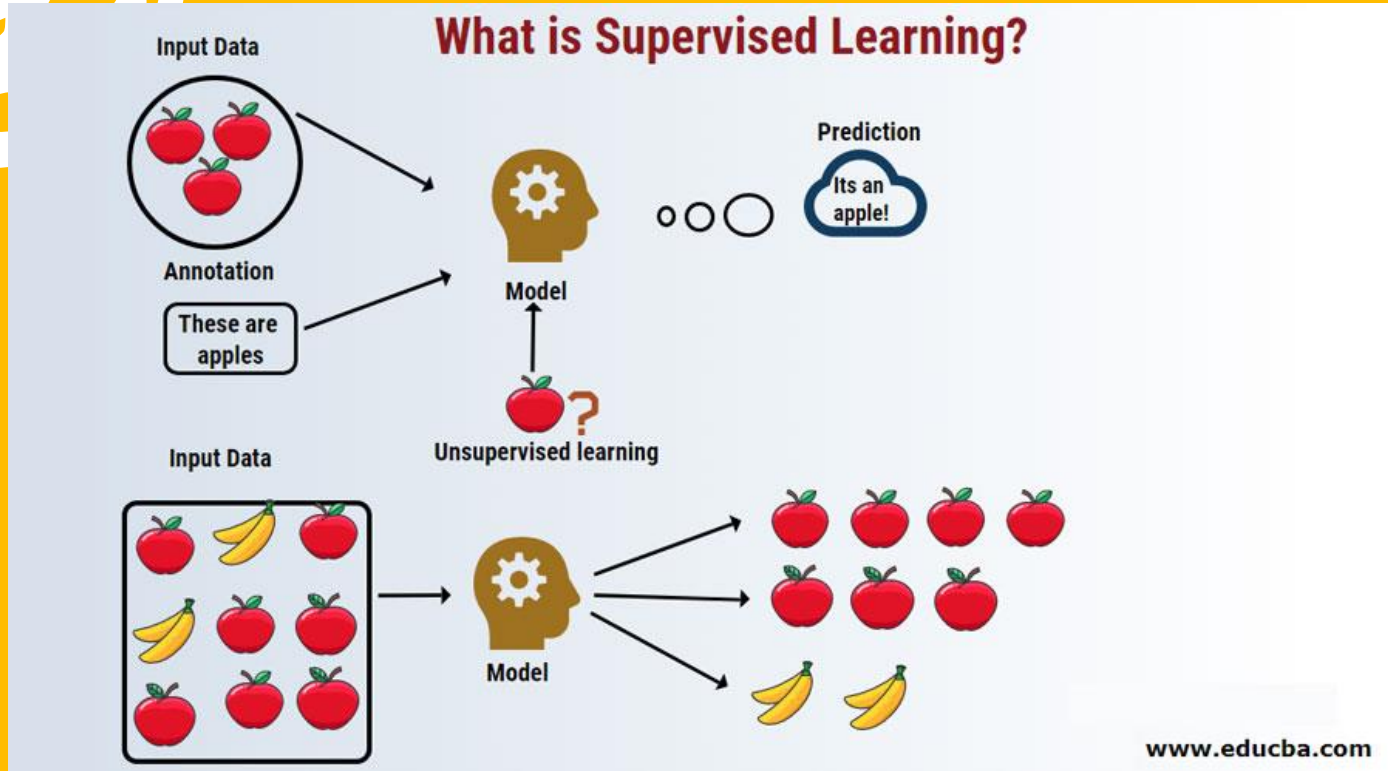


Supervised Learning





What is Supervised Learning?



Supervised Learning

Supervised learning (SL) is **the machine learning task of learning a function that maps an input to an output** based on example input-output pairs.





Knowledge Check

In supervised learning, what is the primary objective?

- X a) To predict labels or values for new data based on labeled training data
- b) To cluster data points into groups based on their similarities
- c) To reduce the dimensionality of the data
- d) To discover patterns or associations in the data

X **Answer: To predict labels or values for new data based on labeled training data**



Summary

- Reason to study Supervised Learning
- Supervised Learning





References

➤ <https://stl.tech/blog/introduction-to-machine-learning-and-its-applications/>





REACH US



snsinstitutions



snsinstitutions



snsinstitutions



snsinstitutions



snsinstitutions

Thanks!

