



SNS College of Technology

Coimbatore - 35



19BAT610- Human Resources Management

Unit V - Salary And Wages Administration

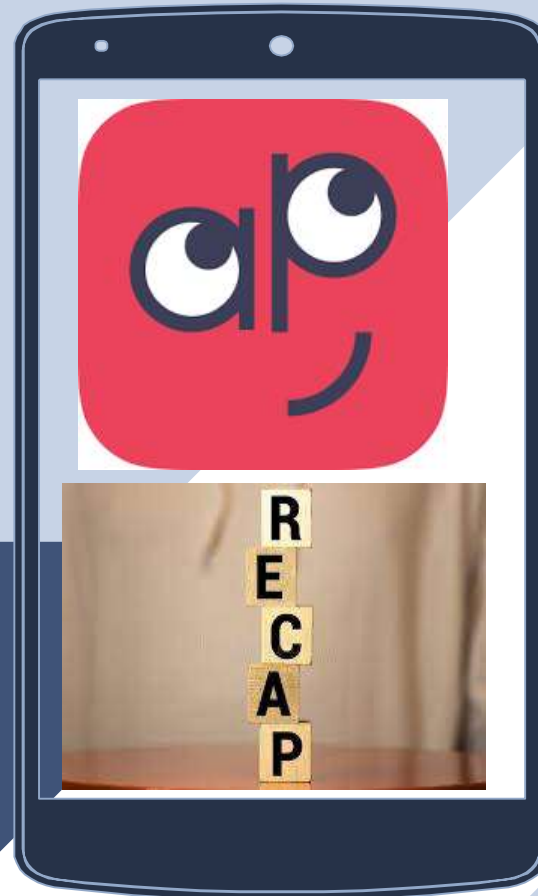
Topic...Guess...???



Presented by

Dr.S.Senthil kumar
Assistant Professor

1st Indian Institution to Implement Design Thinking Curriculum
Redesigning Common Mind and Business Towards Excellence



RECAP



What is sparking in your mind...?





Employee Welfare



Employees Welfare is a term which includes the perks and benefits provided to the employees of the organization apart from their regular salary or remuneration



Objective of Employee Welfare





Measures of EW

Statutory Measures

- *Working Hours Limit*
- *Providing First Aid Facility*
- *Canteen Facility*
- *Drinking-Water Facility*
- *Sanitation Facility*
- *Washing Facility*
- *Maternity Benefits*

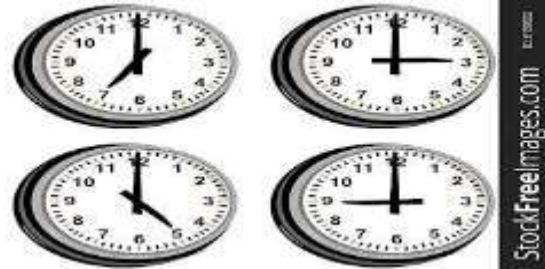
Voluntary Measures

- *Recreation Facility*
- *Education Facility*
- *Transport Facility*
- *Free Meal Facility*



Scope of Employee Welfare

- The scope of employee Welfare cannot be limited, since it differs according to social customs and the degree of industrialization indifferent countries and at different times.



StockFreeImages.com



Assessment



Organizations reward their employees who contribute to the achievement of organizational goals.

True or False





Summary



Remuneration
Objective of Remuneration
Methods
Theory
Functions

SUMMARY





Reference

- <https://www.questionpro.com/blog/employee-motivation/>
- <https://theinvestorsbook.com/employee-welfare.html>





Reach Us



SNSINSTITUTIONS



SNSINSTITUTIONS



SNSINSTITUTIONS



SNSINSTITUTIONS



SNSINSTITUTIONS

*Thank
you*